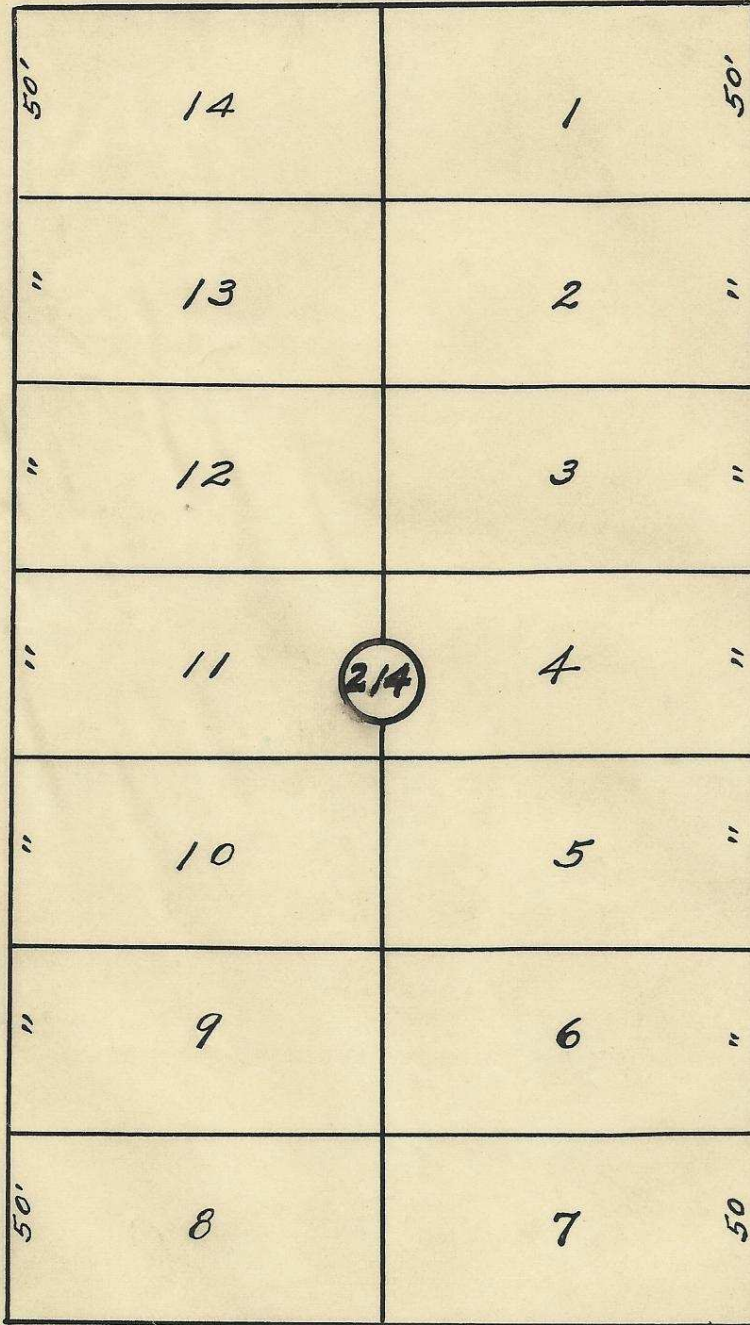


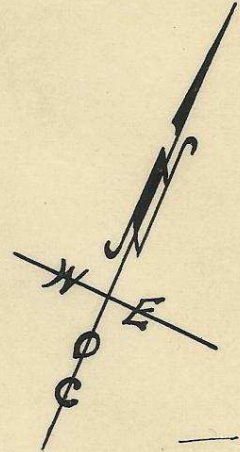
S. W. HAILEY AVE.

60'

60



S. W. 11<sup>th</sup> ST.



Plat of  
 Block 214 of  
 Reservation Addition  
 to the town, now city  
 of Pendleton, Oregon.  
 Scale: - 1 inch = 50 Feet.  
 Surveyed, staked & platted,  
 Dec. 1948 - By W. E. O. Criger

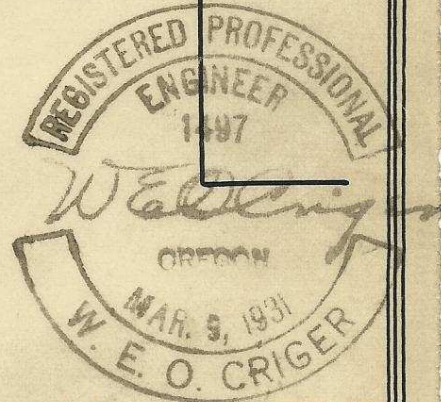
S. W. 10<sup>th</sup> ST.

S. W. ISAAC AVE.

60

2N3210 DB

60



06-282-Ax