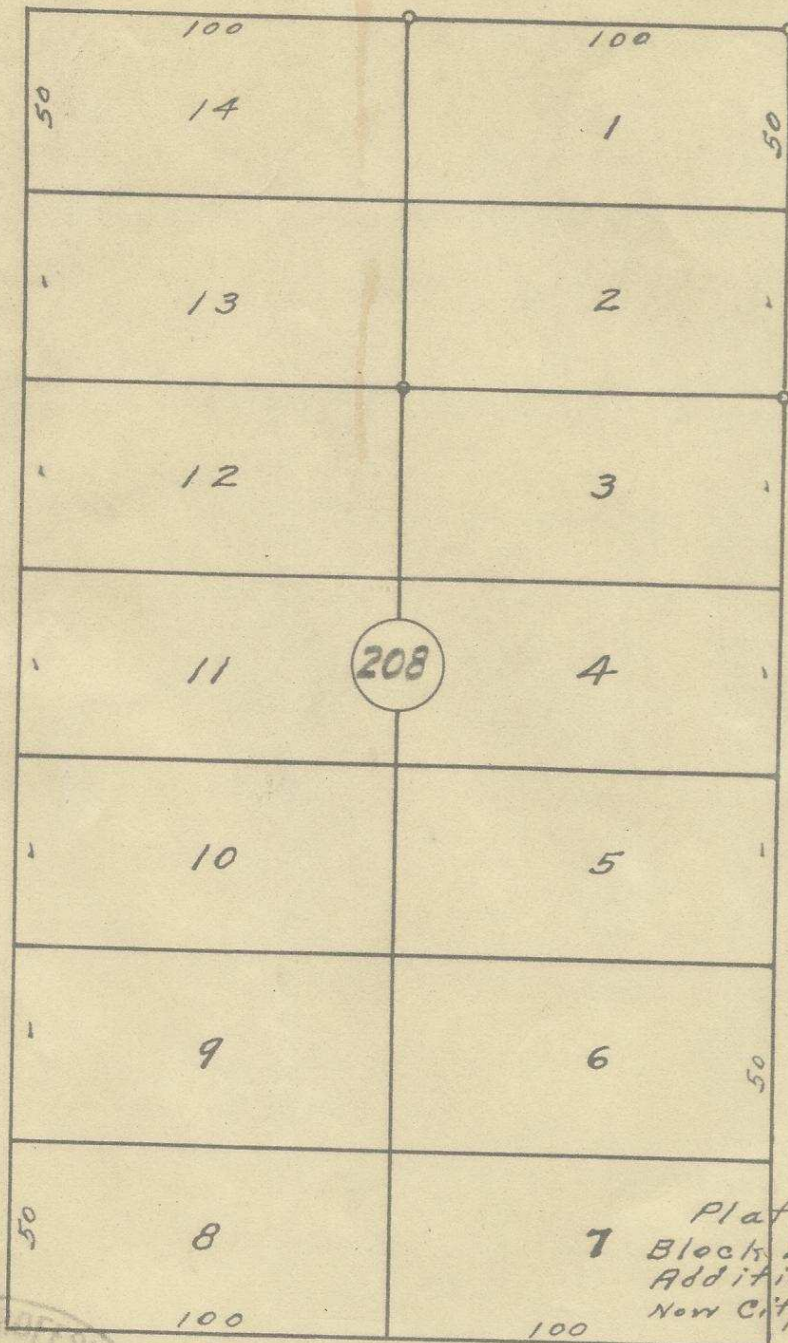


S.W. Hailey Ave.

60

60

60



S.W. 17th St.

S.W. 16th St.

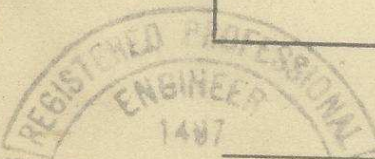
Plat showing  
7 Blocks 208 of Reservation  
Addition to the town,  
New City of Pendleton, Ore.

Surveyed, staked & platted,  
By - W. E. O. Criger  
Scale: 1 inch = 50 Feet.

S.W. Isaac Ave.

60

60



2532 1000

60

06-288-Ax