

7

8

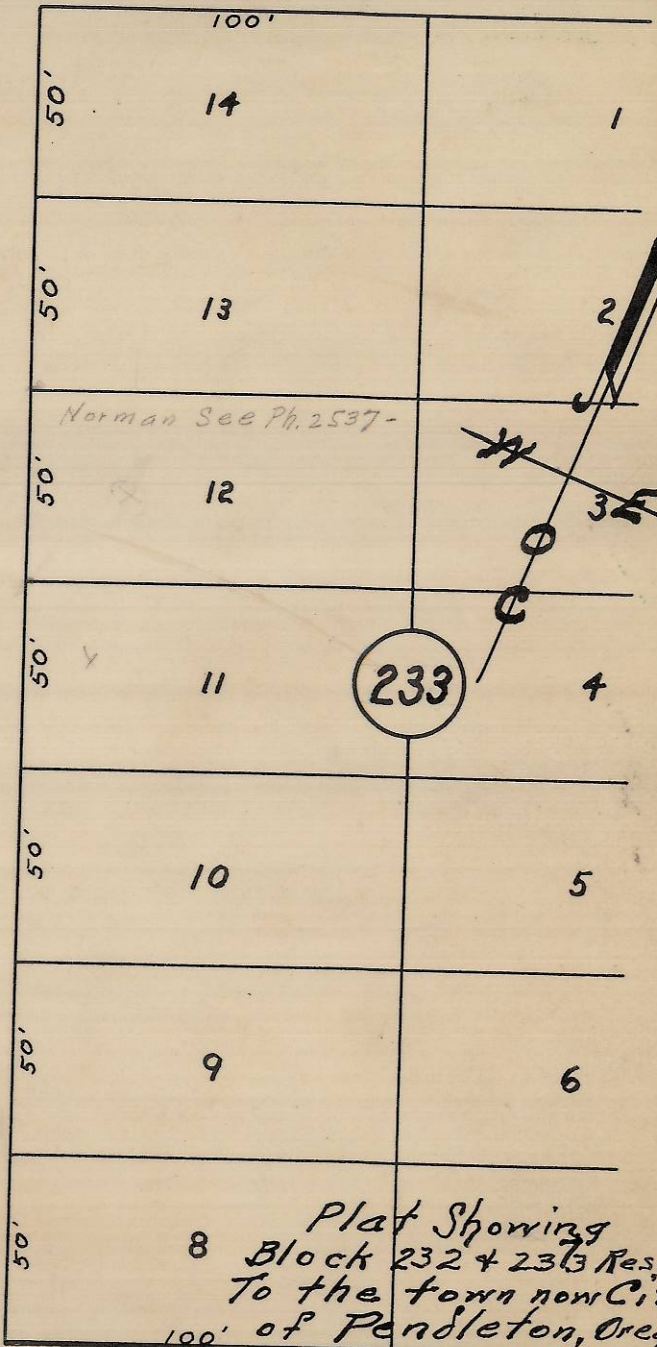
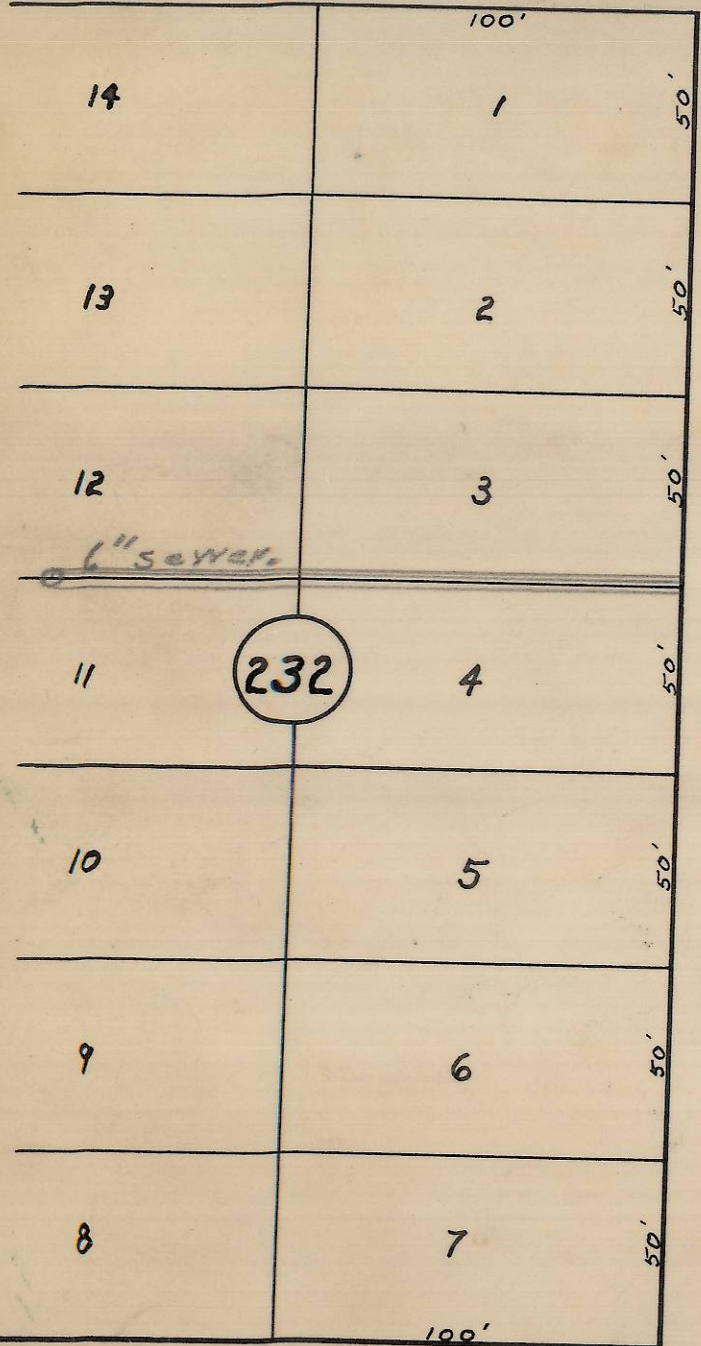
60'

S.E. HAILEY

AVE.

60'

60'



S.E. 8 ST.

Plat Showing Block 232 + 233 Res. Adm To the town now City 100' of Pendleton, Oregon.

60'

REGISTERED PROFESSIONAL ENGINEER 1497

S.E. ISAAC

W. E. O. CRIGER

MAR. 9, 1931

OREGON

60'

AVE.

14

60'

06-299-AX

Scale 1" = 50'

6

CB Leggat 7-14-99