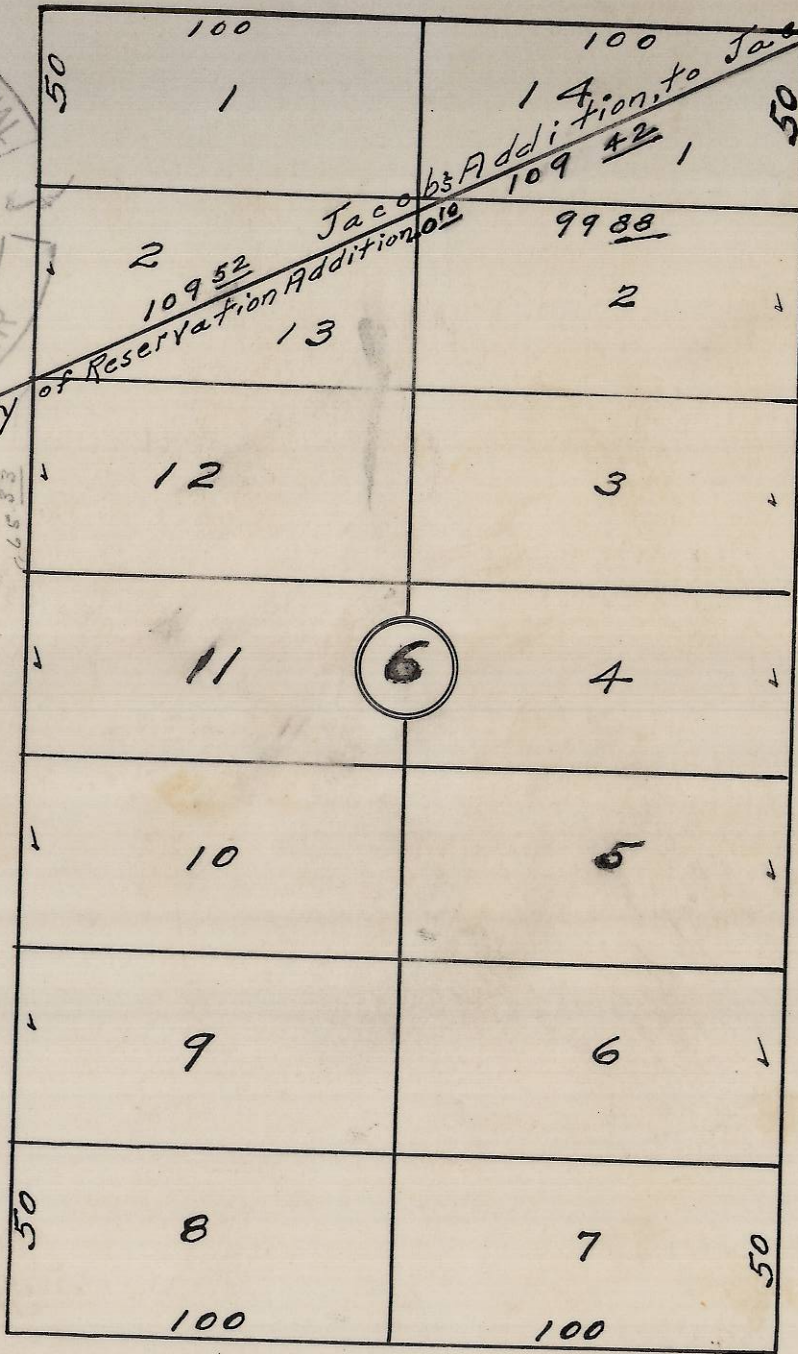


S.E. Byers Ave.



S.E. 9th St.

S.E. 9th St. (arrive)

S.E. Court Ave.

Plat Showing  
 Block 6 of Reservation Addition  
 to the Town, now City of Penstemon, Oregon.  
 Surveyed, staked & platted - April - 1955 -  
 By W. E. O. Criger.

Scale: 1" = 50'

06-336-Ax

Paul Christensen.

(4)