

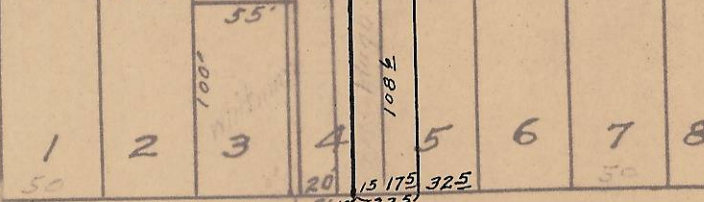
UMATILLA

W O O E RIVER

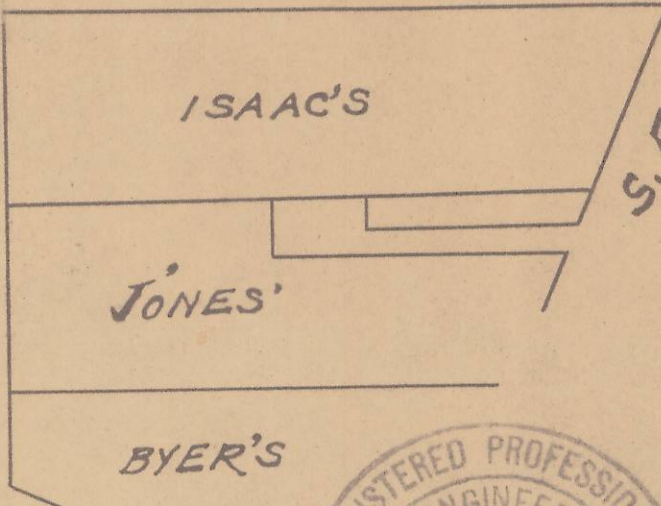
4
5
1
2
3
4
5
6

S.E. 5th St.

LADON'S ADDITION



S.E. BYERS AVE.

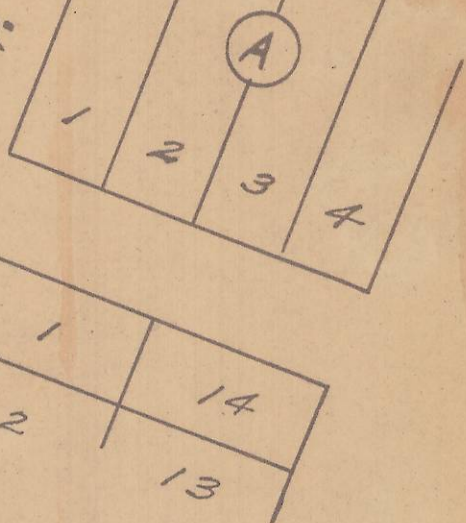


ISAAC'S

JONES'

BYER'S

S.E. COURT AVE.



S.E. 6th St.



Plot of Block 1 of
 LaDon's Addition to
 the town, now City of
 Pendleton, Oregon.
 Scale: 1 inch = 100 Ft.
 Surveyed, Staked, and Platted,
 April - 1948.
 By W. E. O. Criger.
 T24 30 2C

Revd by Umatilla County Surveyor
 2/7/2013
 S. Res
 13-041-AX