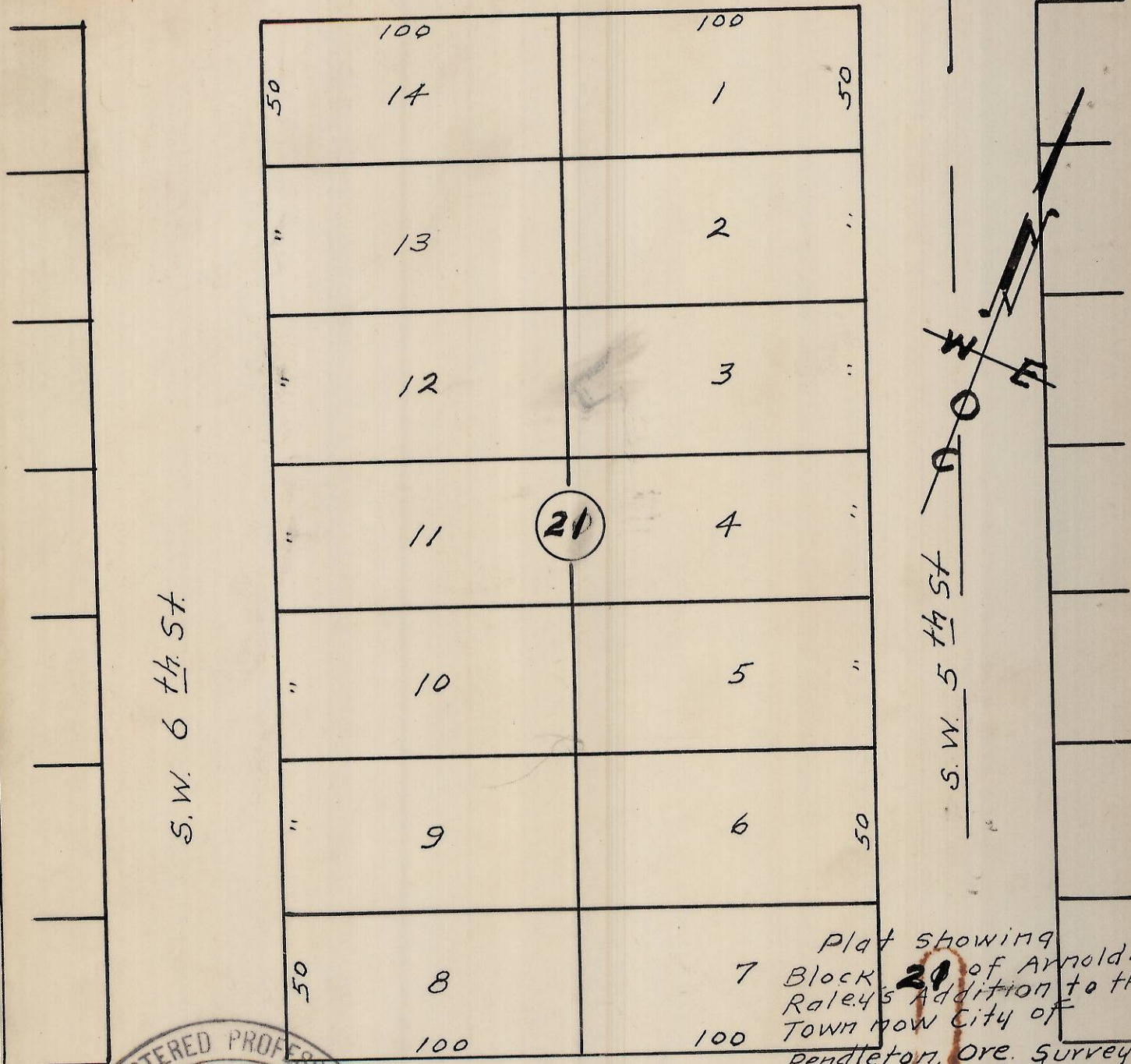


60  
60

S. W. Court Ave



S. W. 6<sup>th</sup> St.

S. W. 5<sup>th</sup> St.

21

Plat showing  
 7 Block 21 of Arnold &  
 Raley's Addition to the  
 Town now City of  
 Pendleton, Ore. Surveyed  
 staked and plotted May 1949.  
 By W. E. O. Criger  
 Scale 1" = 50 feet.

S. W. Dorion Ave

REGISTERED PROFESSIONAL  
 ENGINEER  
 1497

W. E. O. Criger

OREGON  
 MAR. 9, 1931  
 W. E. O. CRIGER

Rec'd by Umatilla County Surveyor  
 2/7/2013 by A. Pres.  
 13-045-AX

60

4