

60

60

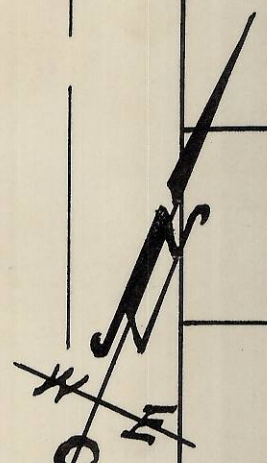
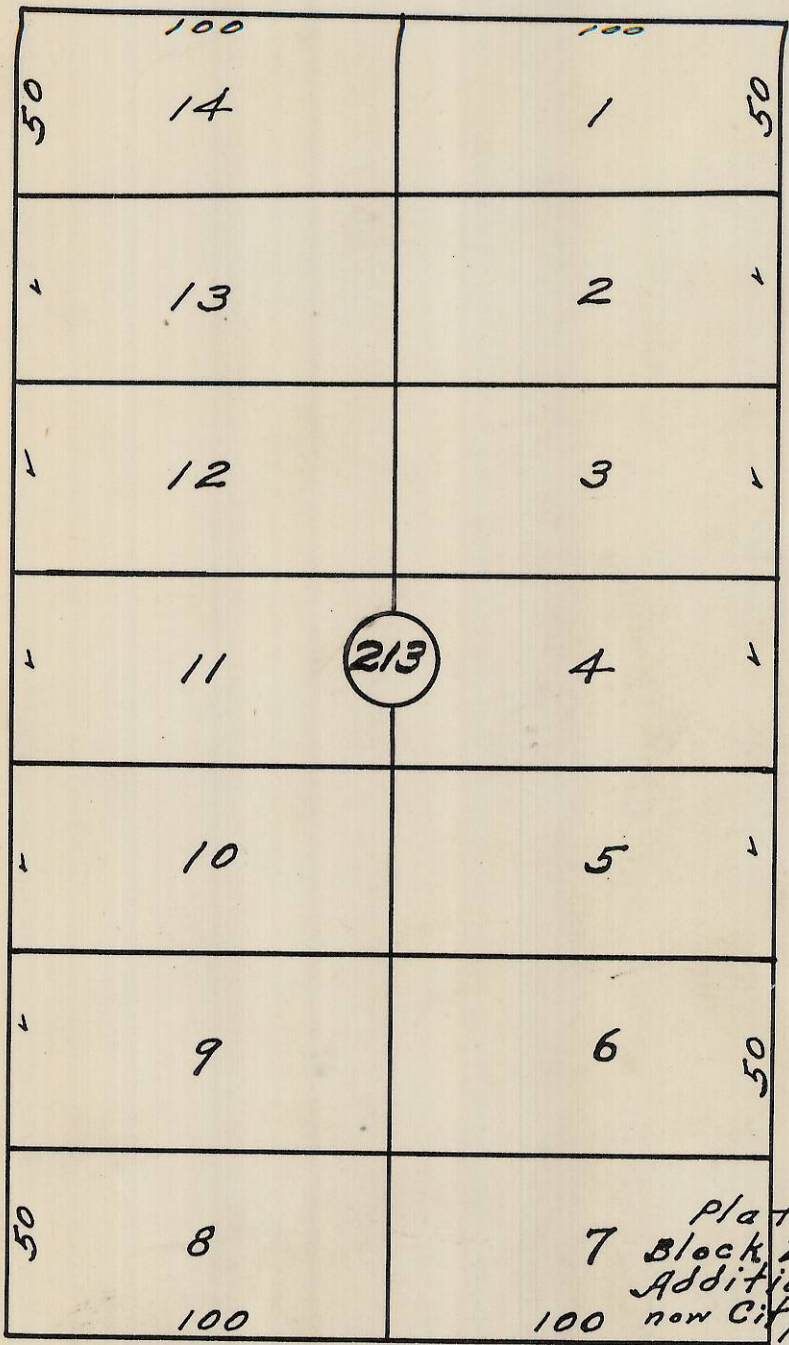
60

60

S. W. Hailey Ave.

S. W. 12th St.

S. W. 11th St.



Plat showing
 7 Block 213 of Reservation.
 Addition to the town,
 now City of Pendleton, Ore.
 Surveyed, Staked & platted
 July - 1949 - By W.E.O. Criger.
 Scale: 1 inch = 50 Feet.

S. W. Isaacs Ave.



Rec'd 2/21/13
 J. T. [Signature]
 13-110-Ax

2N 32 10 DB

4