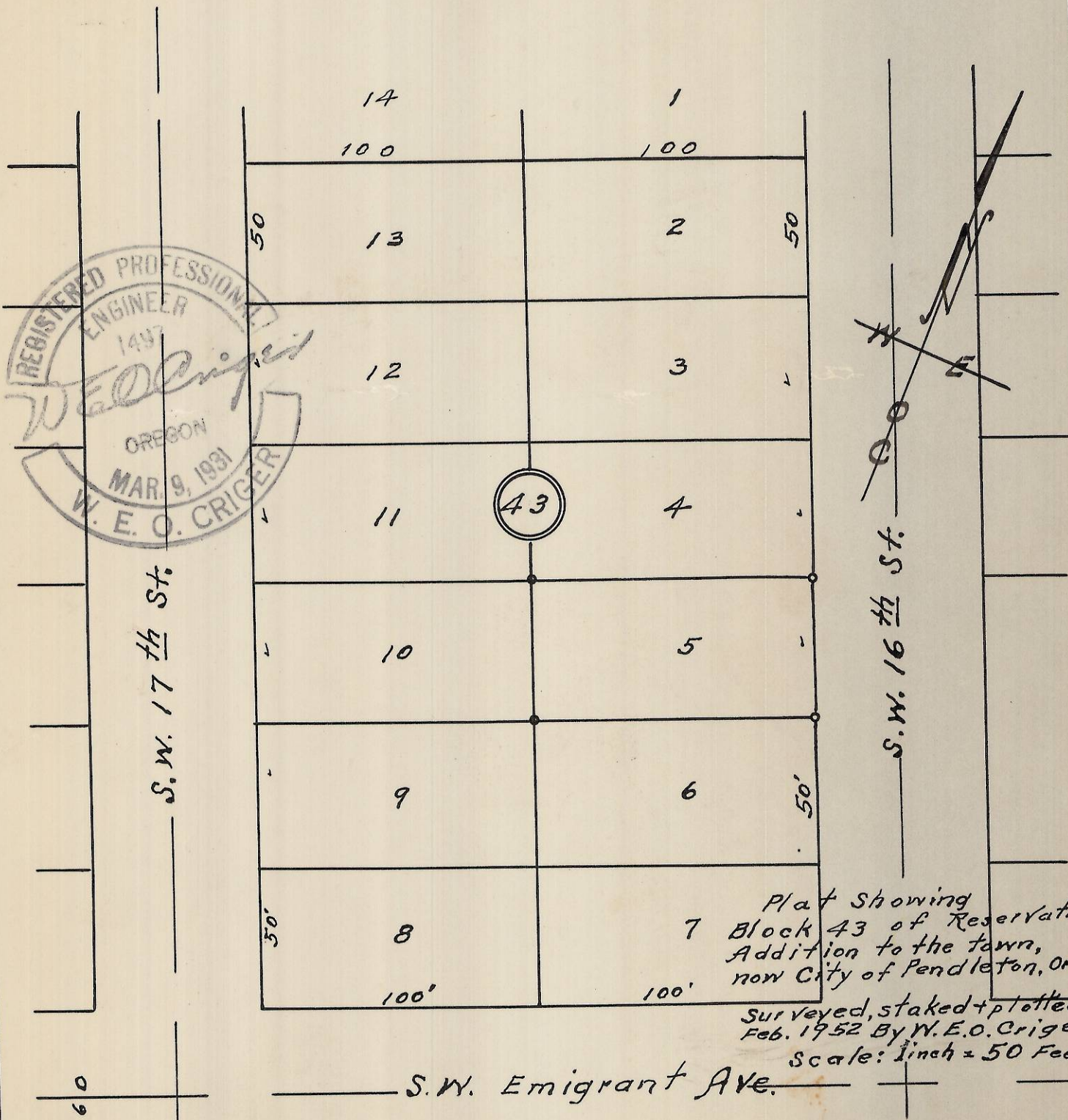


60'

60'



Plat showing
7 Block 43 of Reservation
Addition to the town,
now City of Pendleton, Ore.
Surveyed, staked & plotted
Feb. 1952 By W.E.O. Criger.
Scale: 1 inch = 50 Feet.

Rec'd. 2/21/13
D. Haberline
13-111-Ax

Johnie Haberline

4

2N 32 10 CB