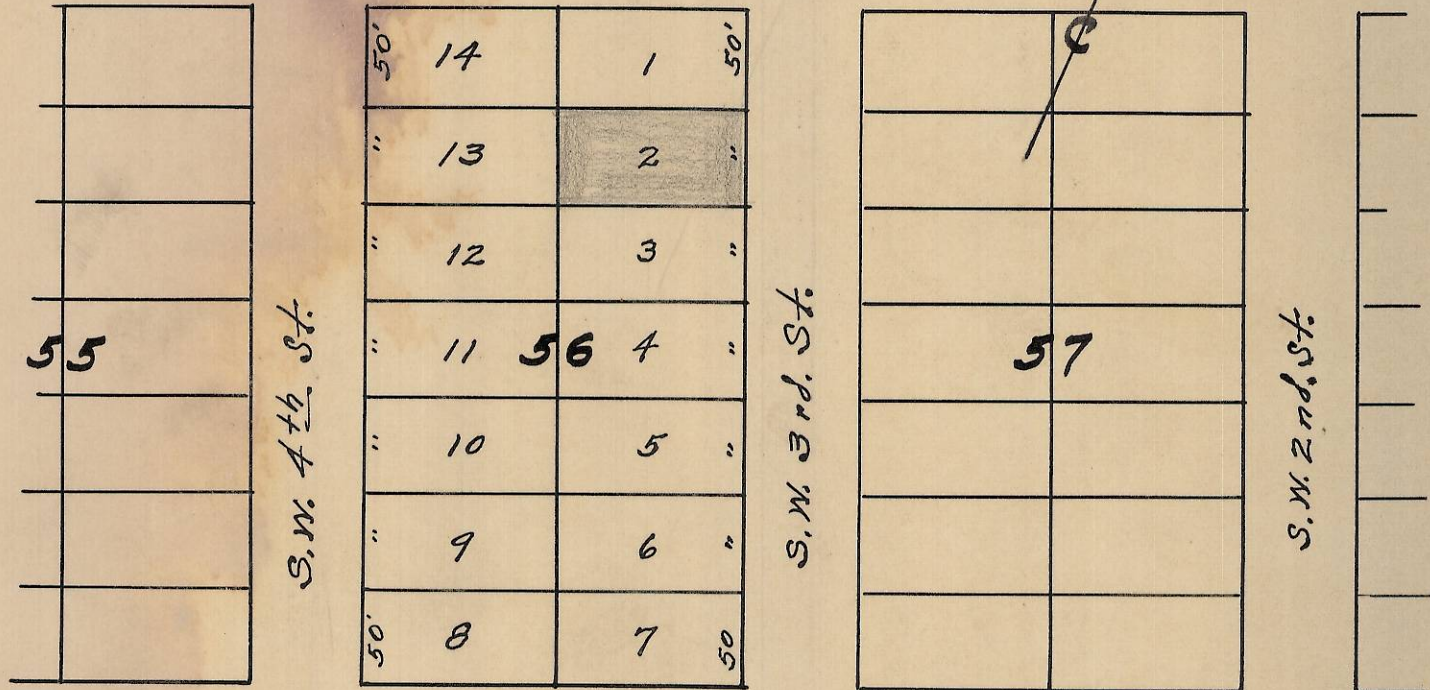


20

19

18

S.W. Dorion Ave. N. 66° 24' E.



S.W. Emigrant Ave.

Plat showing
 Lot 2 of Block 56 of Reservation Addition to the
 City of Pendleton, Oregon.

Surveyed, Staked and platted - Mar. 13 - 1948 -

By W. E. O. Criger - For - William Ryder -

Scale: 1 inch = 100 Feet.



RECEIVED BY

Umatilla County Surveyor

Date: 2/21/13

Rec'd By: J. Hobart

No.: 13-118-Ax

2N 32 10 AD



3