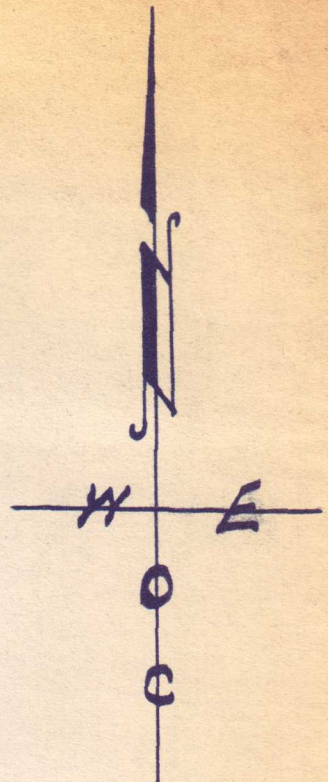
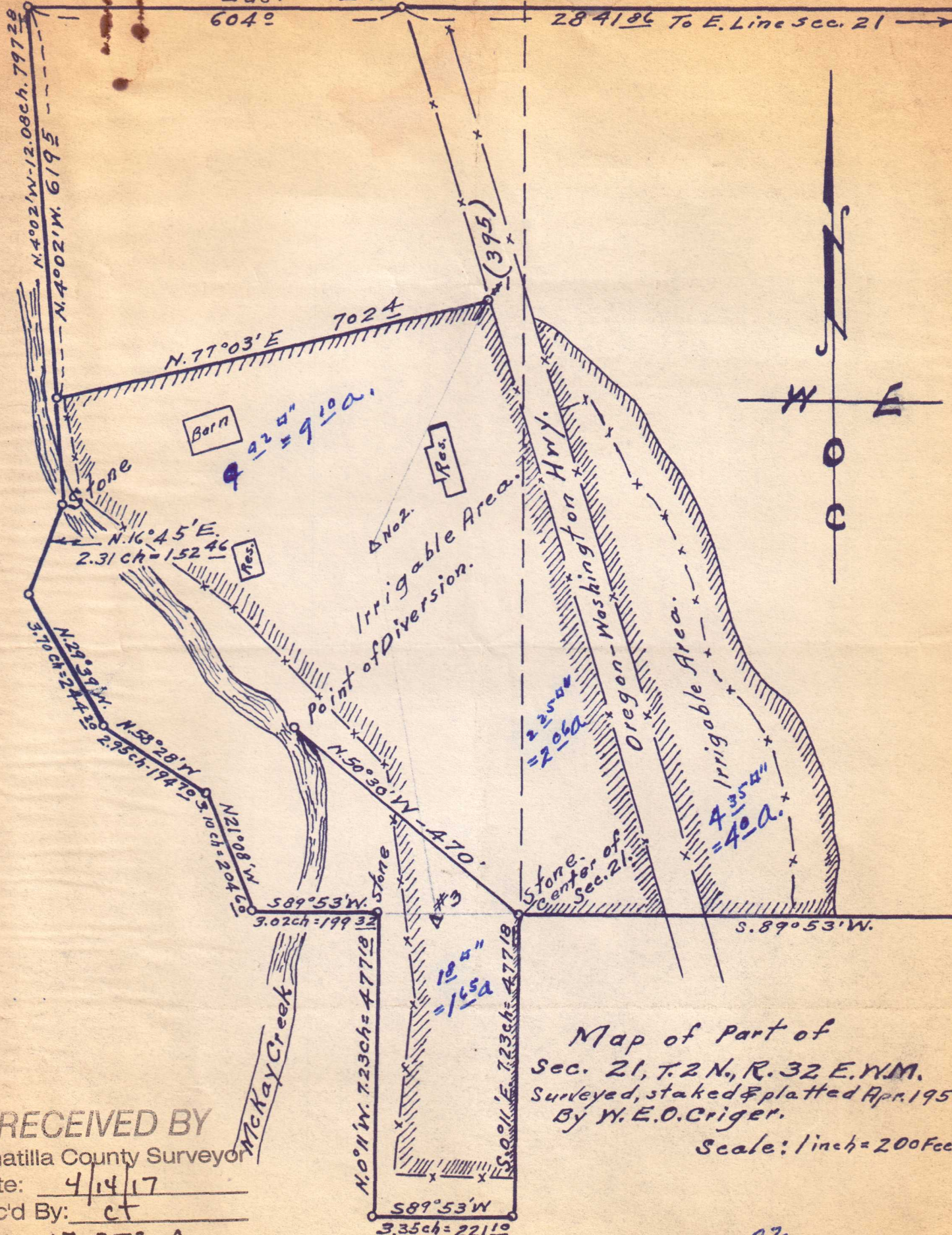


East - 27.00 ch = 1782^o
604^o

284186 To E. Line Sec. 21



Map of Part of
 Sec. 21, T.2N., R.32E. W.M.
 Surveyed, staked & platted Apr. 1951.
 By W. E. O. Criger.

Scale: 1 inch = 200 Feet.

RECEIVED BY

Umatilla County Surveyor

Date: 4/14/17

Rec'd By: CT

No.: 17-052-Ax

Const = 0.92

F. L. Ingram