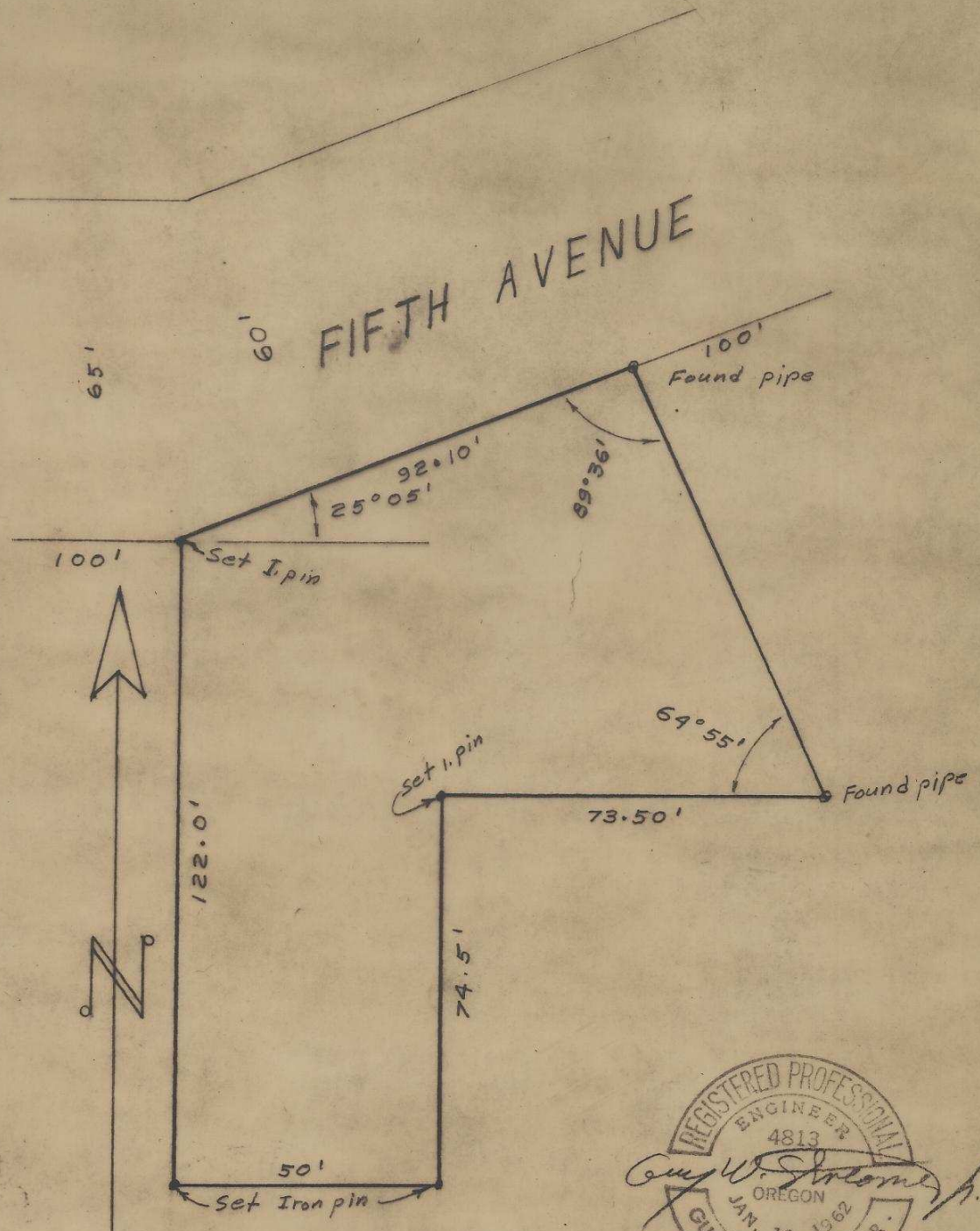


Found spike at 5th and Columbia  
and pin at 6th and Columbia



SURVEY FOR  
B. R. PILGER  
MILTON-FREEWATER, ORE.  
Scale 1" = 30' Mar. 4, 1972

*Guy W. Streamer, R.*  
PROFESSIONAL ENGINEER

5N-35-12BA  
Survey 605  
H85-Ax