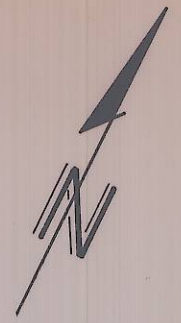


NW 1/4 SW 1/4 SEC. 10 T. 2N. R. 32E. W.M.
 LOT 1 BLOCK 97 RESERVATION ADDITION
 TO THE CITY OF PENDLETON, OREGON UMATILLA, CO.

T-53-Ax



RESERVATION ADDITION
 MONUMENT N° 2 BRASS
 CAP IN CONCRETE

N 66° 24' 00" E (PLAT)
 S.W. EMIGRANT AVE.

Fd. PK.

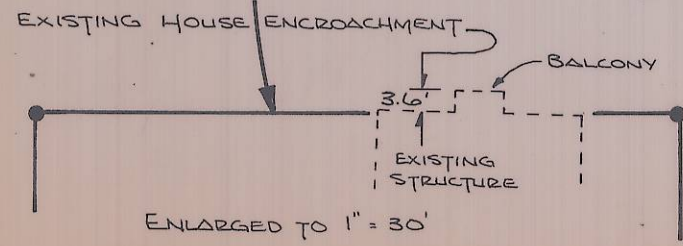
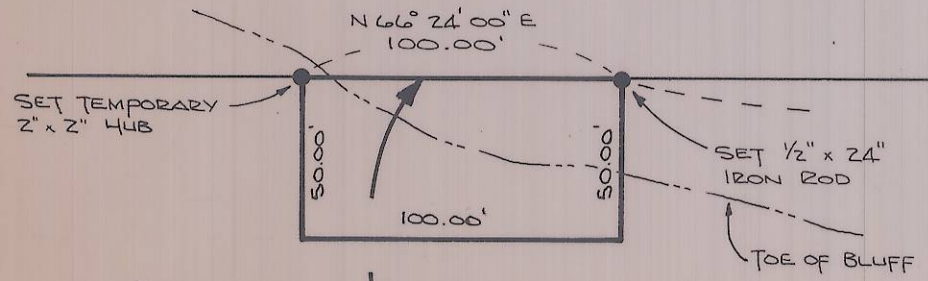
S.W. 19TH STREET

S 23° 36' 00" E 440.00'
 S.W. 17TH STREET

E 11TH STREET

CITY MONUMENT
 1" I.P. WITH CAP

N 66° 24' 00" E
 S.W. FRAZER AVE.



PROPERTY SURVEY FOR	
FARMERS INSURANCE GROUP	
IN BLOCK 97, RESERVATION ADDITION TO THE CITY OF PENDLETON, OREGON	
SCALE: 1" = 60'	DATE: 8/14/75
WALLULIS & ASSOCIATES	
ENGINEERING & PLANNING	
213 SW EMIGRANT	PENDLETON OREGON

J-65 J-55