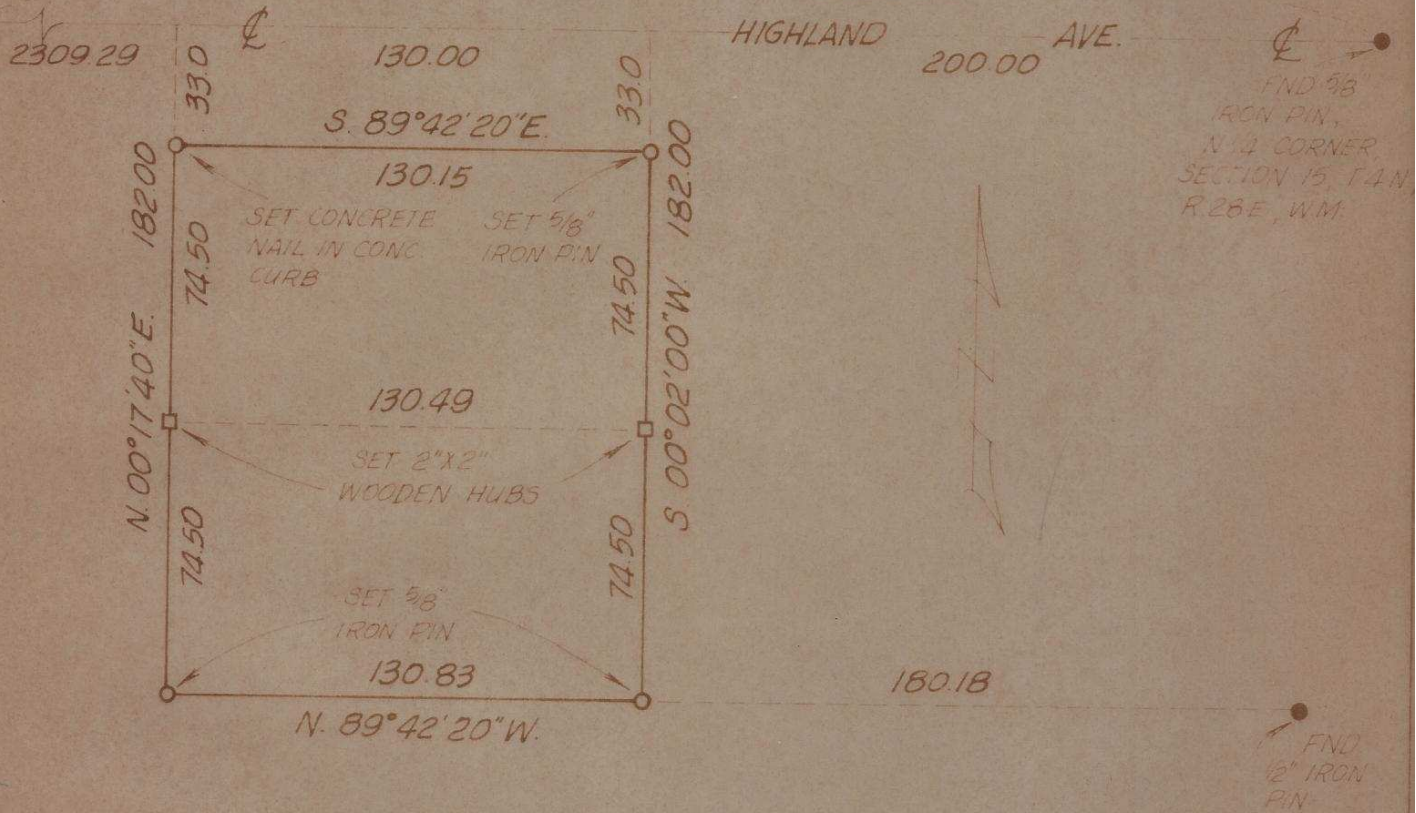


FND 2" IRON PIPE,  
NW CORNER SECTION 15 T4N, R28E, WM

S. 89°42'20"E. 2639.29



NOTE: BEARINGS ARE TRUE BEARING AND ARE BASED ON PREVIOUS WORK DONE IN THE AREA BY THIS FIRM.

David H. Kimble

SURVEY FOR:

Mr. Barry Carter

A parcel in the NW 1/4 of Sec. 15, T4N, R28E, WM

WAYNE HARRIS CO. INC.

ENGINEERS SURVEYORS PENDLETON ORE

SCALE	1" = 50	DRN BY	C.T.P.	DRNG NO
DATE	1-8-75	CKD BY	DNK	75 386

J-57-Ax