

Hall Ave.

city monument
3/4" iron pipe inside
4" pipe

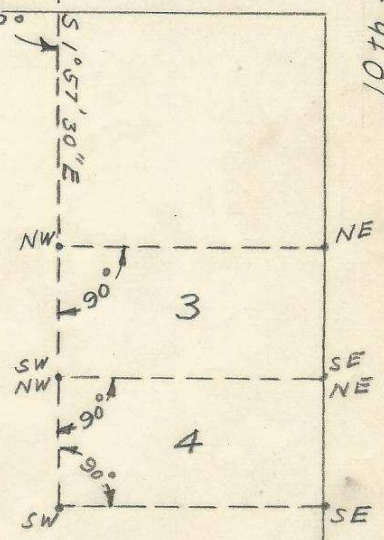
Ellis Ave.

10th Street

TP-1 N 88° 02' 30" E TP-2

N 1° 57' 30" W
12th Street

11th Street



BLOCK 13

City Monument
Tack in bottle cap

Despain Ave.

G-189-AX

436

SE 1/4 SW 3

Resurvey to establish corners of lots three (3) and four (4) of Block 13, Cole's Addition, Pendleton, Oregon for Dr. J.W. Grondahl;

Date: August 9, 1948
Weather: Clear and Hot

Party: R. Keizur
H. Keizur

Q-189-Ax

Set up at city recorded monument (tack in bottle cap) center of 12th St. on projection of North property line of Despain Ave. Back sight on bearing N 1°57'30"W to center line of 12th St. to a point 30' westerly along projection of South property line of Hall St. from city recorded monument at SE intersection of property lines of 12th and Hall streets. (3/4" iron pipe inside 4" pipe) Chain 225 ft. on bearing N 1°57'30"W to turning point No. 1.

Set up on turning point No. 1, back sight on starting point, turn 90° to bearing N 88°02'30"E. Chain 200 ft. on bearing N 88°02'30"E to turning point No. 2.

Set up on turning point No. 2, back sight on turning point No. 1, turn 180° to bearing N 88°02'30"E. Chain 214 ft. on bearing N 88°02'30"E to turning point No. 3.

Set up on turning point No. 3, back sight on turning point No. 2, turn 90° to bearing S 1°57'30"E. Chain 125 ft. to NW corner lot No. 3. Drove wood stake to mark corner.

Set up on NW corner lot No. 3, back sight to turning point No. 3, turn 90° to bearing N 88°02'30"E. Chain 101.58 ft. to NE corner lot No. 3. Set tack in inside edge of concrete sidewalk to mark corner. Turn 180° from back sight to bearing S 1°57'30"E. Chain 50 ft. to NW corner lot No. 4. Drove wood stake to mark corner. On same bearing, chain 100 ft. to SW corner lot No. 4. Drove wood stake to mark corner.

Set up on NW corner lot No. 4, back sight on turning point No. 3, turn 90° to bearing N 88°02'30"E. Chain 99.92 ft. to NE corner lot No. 4. Set tack in inside edge of concrete sidewalk to mark corner.

Set up on SW corner lot No. 4, back sight on turning point No. 3, turn 90° to bearing N 88°02'30"E. Chain 98.26 ft. to SE corner lot No. 4. Set tack in inside edge of concrete sidewalk to mark corner.

Q-189-Ax