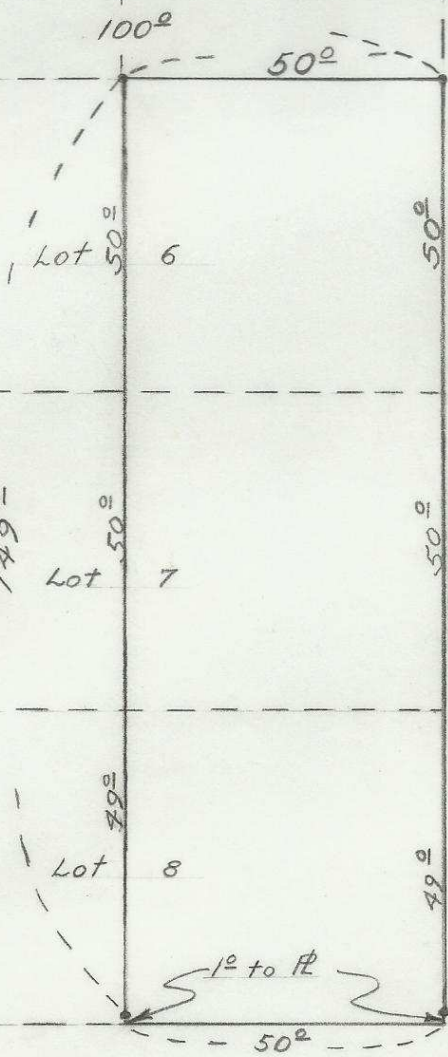


39



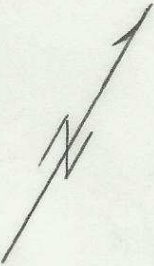
S.W. 20^{1/4} Ave.

60°

S.W. Emigrant

Ave.

60°



REGISTERED PROFESSIONAL
ENGINEER
3758

OREGON
OCT. 22, 1954
STANLEY G. WALLULIS

Survey for Earnest Young

SCALE: 1" = 30'

DATE: 3-30-56

WALL AND TENNESON
Engineers

Oregon

2N 32 10CB
Q-246-Ax