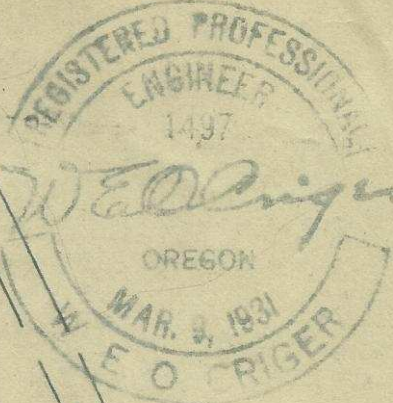
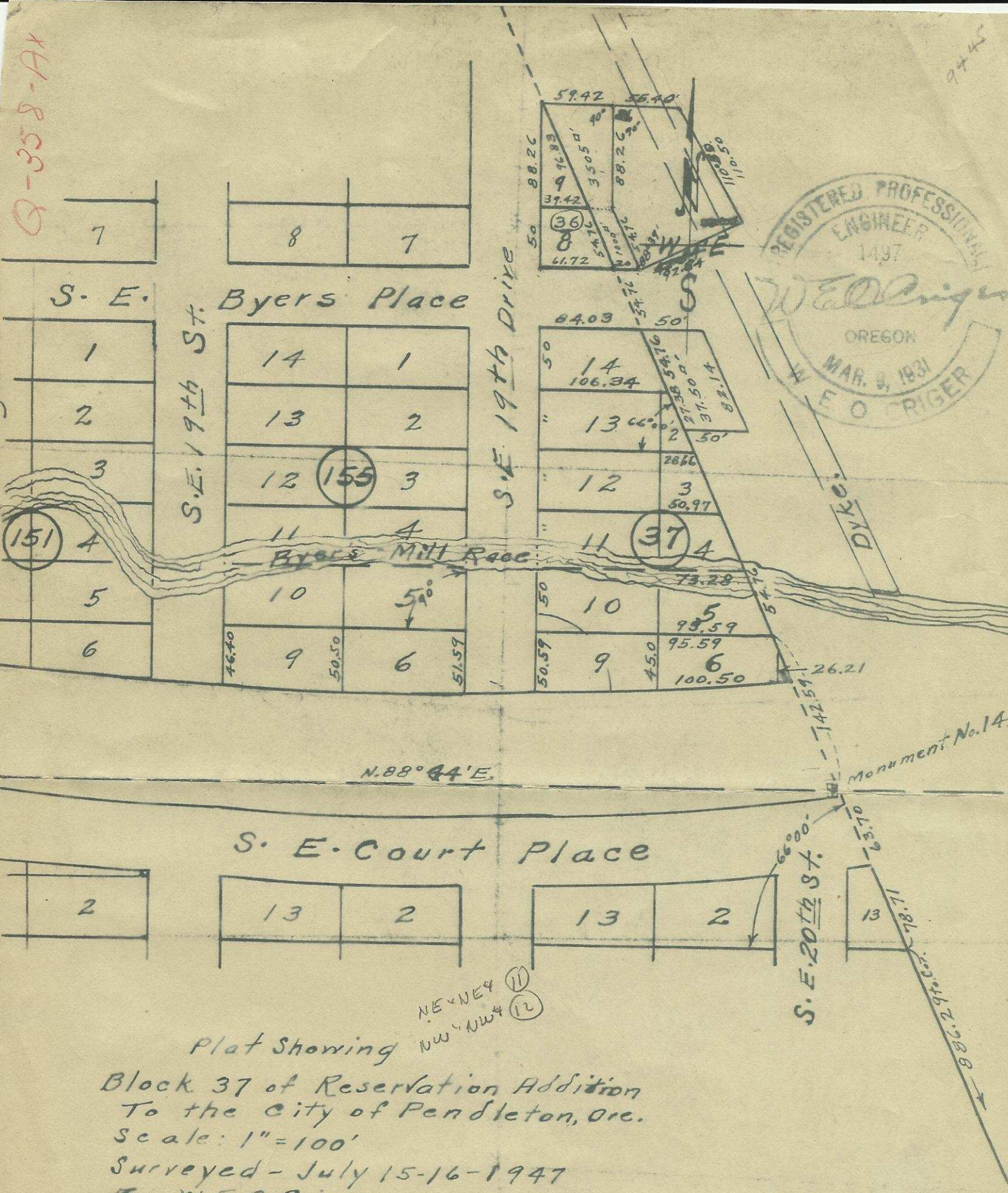


Q-358-Ax

944



S. E. Byers Place

S. E. 19th Drive

S. E. 19th St.

S. E. Court Place

S. E. 20th St.

N. 88° 44' E.

Monument No. 14.

Plat Showing
Block 37 of Reservation Addition
To the City of Pendleton, Ore.
Scale: 1" = 100'
Surveyed - July 15-16-1947
By W. E. O. Origer.

Q-358-Ax

2N32 OICC