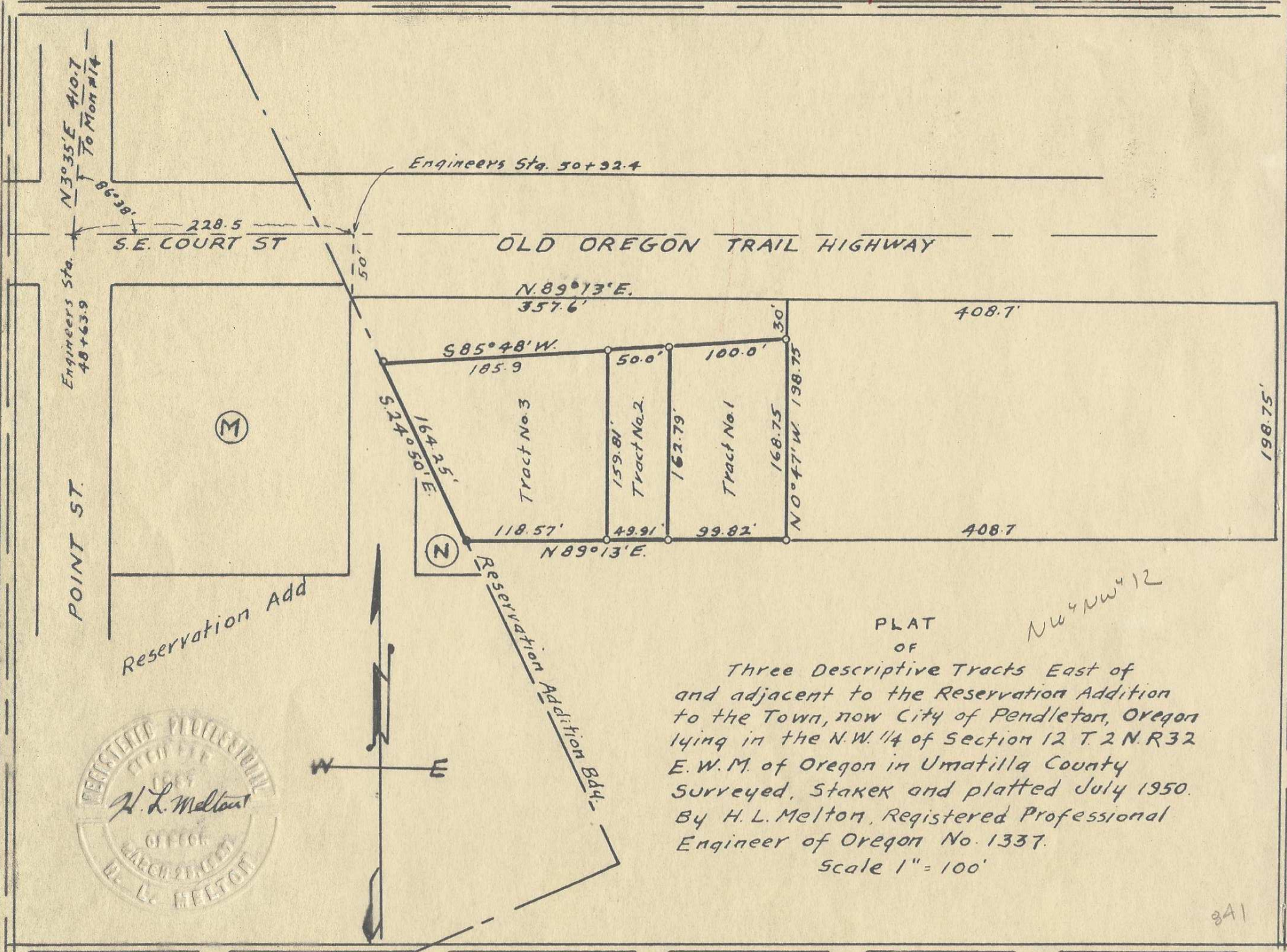


Orig

Q-408-Ax



Reservation Add

Reservation Addition B44-

PLAT OF

Three Descriptive Tracts East of and adjacent to the Reservation Addition to the Town, now City of Pendleton, Oregon lying in the N.W. 1/4 of Section 12 T.2 N. R.32 E.W.M. of Oregon in Umatilla County Surveyed, Stake and platted July 1950. By H. L. Melton, Registered Professional Engineer of Oregon No. 1337.

Scale 1" = 100'





Field Notes

July 12, 1950

Survey for Jack Stangler in Sec 12, T 2 N R 32  
E. W. M. of Oregon. By H. L. Melton  
Reg. Prof. Engr. Ore No 1337  
Tract No. 1

N 3° 35' E  
410.7 ft.

At the center Line Intersection of Court St. East and Point St. in the Town, now City of Pendleton, Oregon at Engineers Station 48+63.9 I checked State Highway Dept. Survey Tie to Monument #14 on the Reservation Addition Boundary. Thence I ran N 89° 13' E 228.5 feet along the center line of said Court St. East. to Engineers Station 50+92.4. Thence S. 0° 47' E. and at right angles to the center Line of the Old Oregon Trail a distance of 50° feet to the Southerly right of way line of the said Old Oregon Trail Highway; Thence N. 89° 13' E. along said right of way line a distance of 357.6 feet; Thence S. 0° 47' E. a distance of 30 feet to a point which is the point of beginning of this Tract Survey; I ran thence S 85° 48' W. a distance of 100° ft; Thence S. 0° 47' E. a distance of 162.79 feet; Thence N. 89° 13' E. a distance of 99.82 feet; Thence N. 0° 47' W. a distance of 168.75 feet to the point of Beginning.

Tract No. 2.

Beginning at the N. W. Corner of the above described Tract No. 1, I ran S 85° 48' W a distance of 50° feet; Thence S. 0° 47' E. a distance of 159.81 feet; Thence N. 89° 13' E. a distance of 49.91 feet; Thence N. 0° 47' W. a distance of 162.79 feet to the point of Beginning.

Q-408-Ax