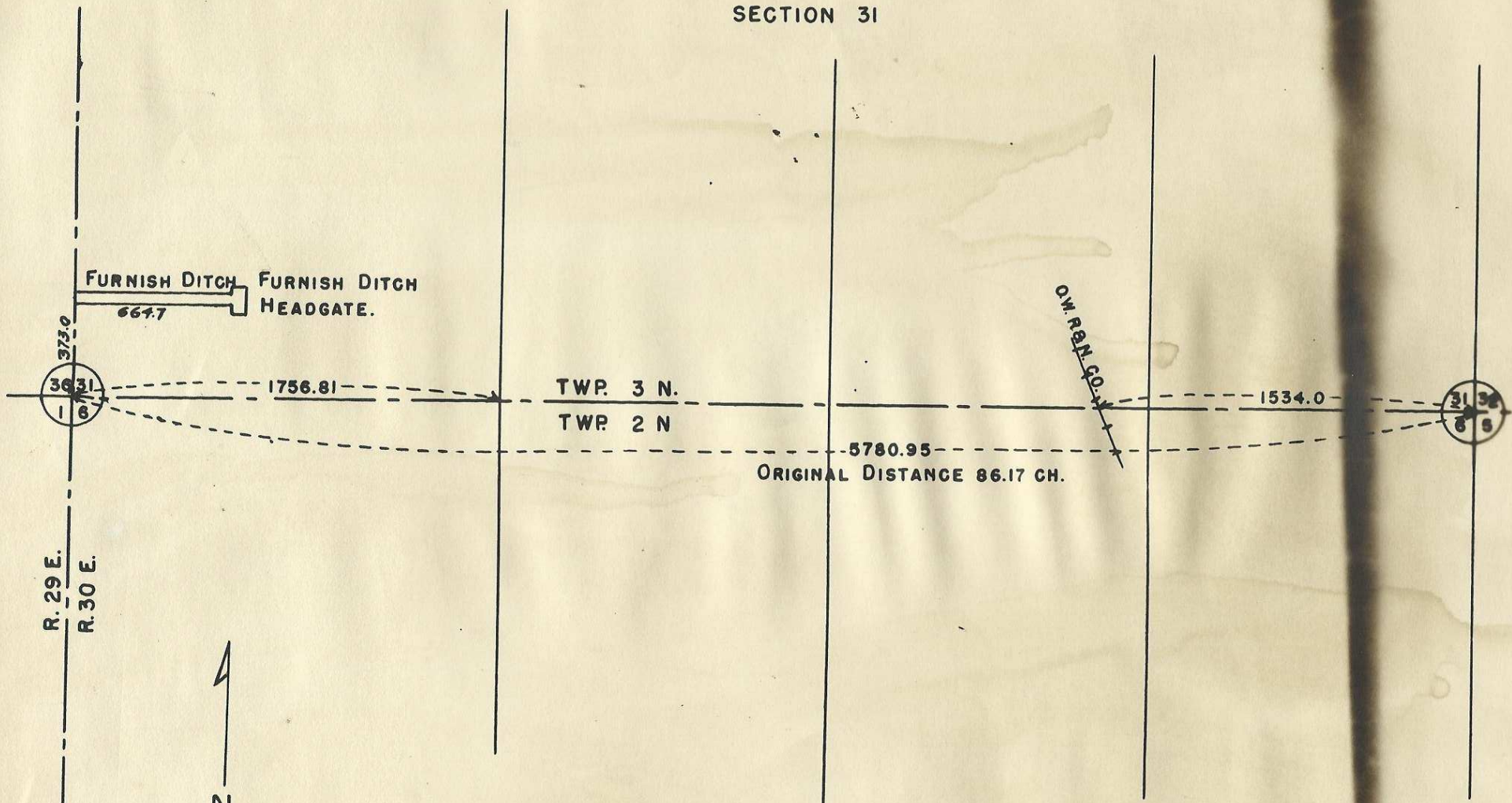


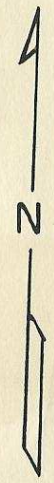
G-515-Ax

ORIG

SECTION 31



R. 29 E.
R. 30 E.



OREGON
LAND SALES
OFFICE

Elmo E. Robnett

ELMO E. ROBBETT
169

SOUTH LINE OF SEC. 31 T. 3N. R. 30 E.W.M.

SCALE 1"=600'

OCTOBER 29 1947.