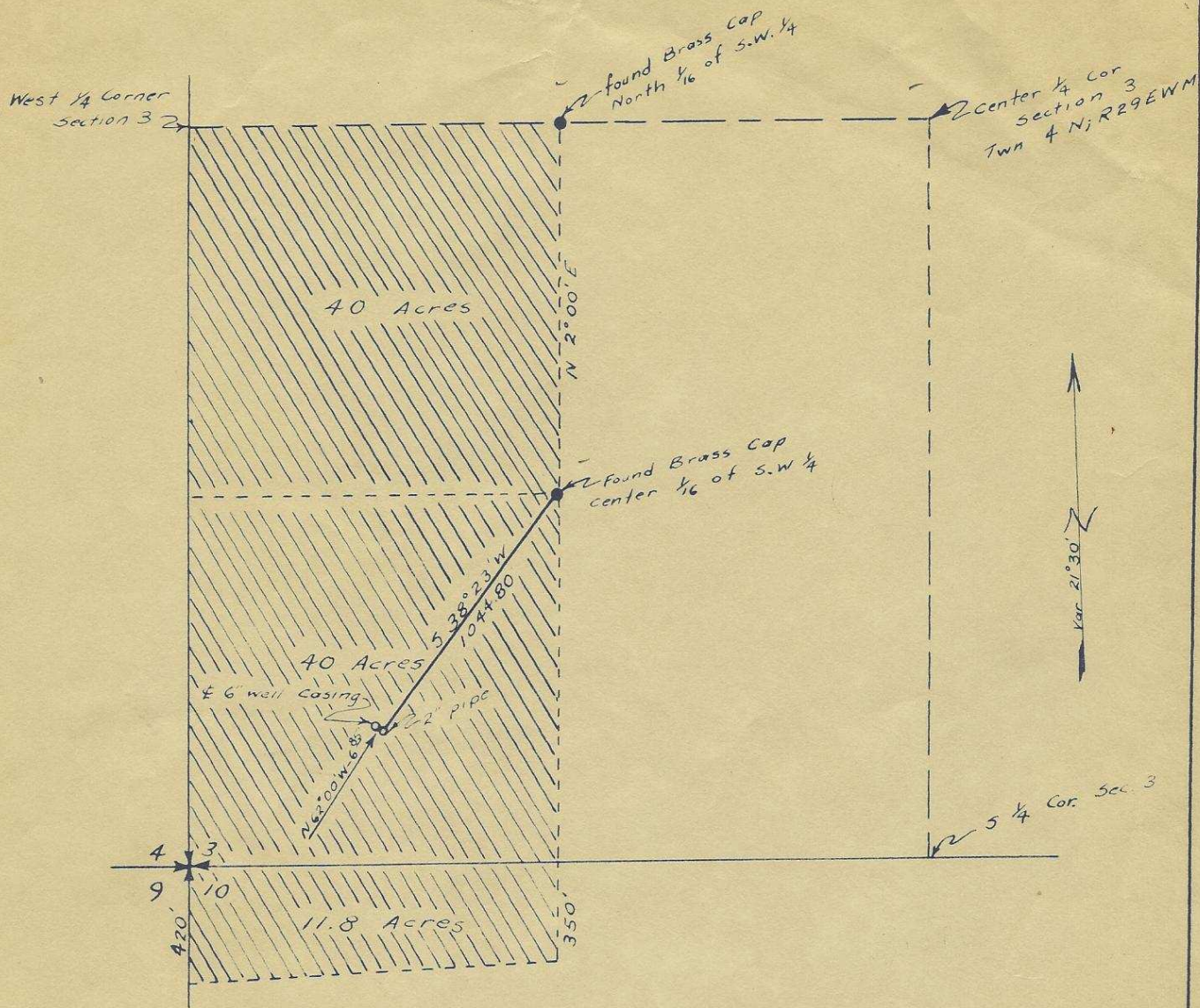


Q-679-Ax



Stanley G. Wallulis

I, Stanley G. Wallulis of Pendleton, Ore., do hereby certify that this map was made from notes taken during an actual survey made by me on July 31, 1957 and that the monument shown on this map consists of a 2" diameter pipe, 36" long,

is 538°23' W - 1044.80 from Center 1/4 Cor of SW 1/4 of Sec. 3, Twn 4 N, R 29 E. W. M

Stanley G. Wallulis

WELL SURVEY FOR MERRIT GRAY	
Scale 1" = 600'	Aug. 5, 1957
STANLEY G. WALLULIS Consulting Engineer Pendleton Oregon	