

NE (2)

N.W. 5TH AVE.

N.E. 5TH AVE.

91° 12'

91° 3'

I.P.

2'-¹⁰/₁₆"

30'

SET BRASS PLUG 1.0' EAST
 OF PROPERTY LINE IN
 SIDEWALK.

116.5'

91° 3'

30.0'

30'

NORTH

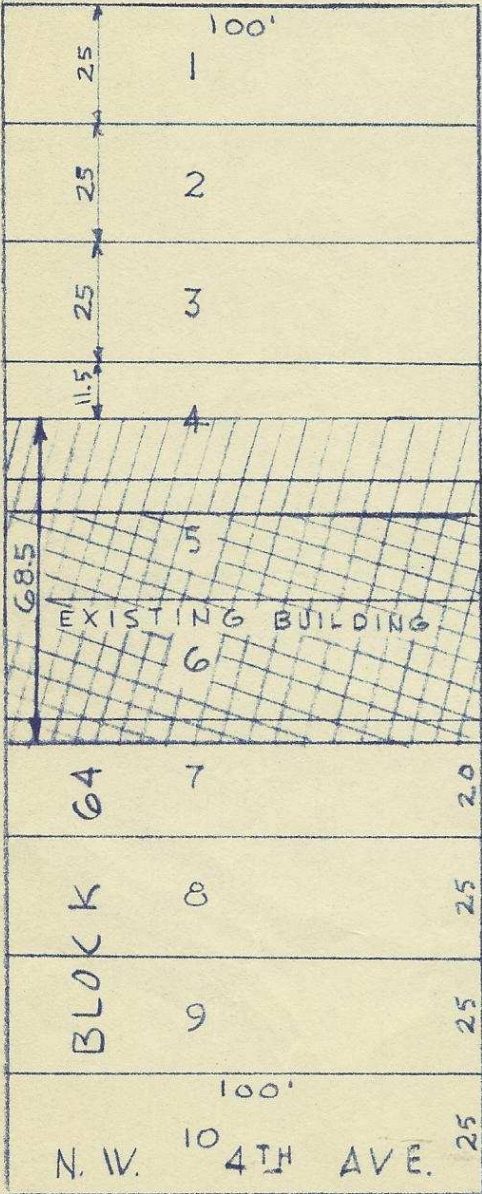
NORTH MAIN ST.

BLOCK 63

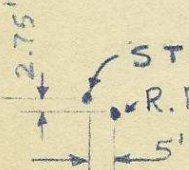


N.E. 4TH AVE.

Q-1010-AX



STONE, True Gov. corner
 R.R. Iron, subdivision corner



I.P.

5N35-2 SE, NE
 AD