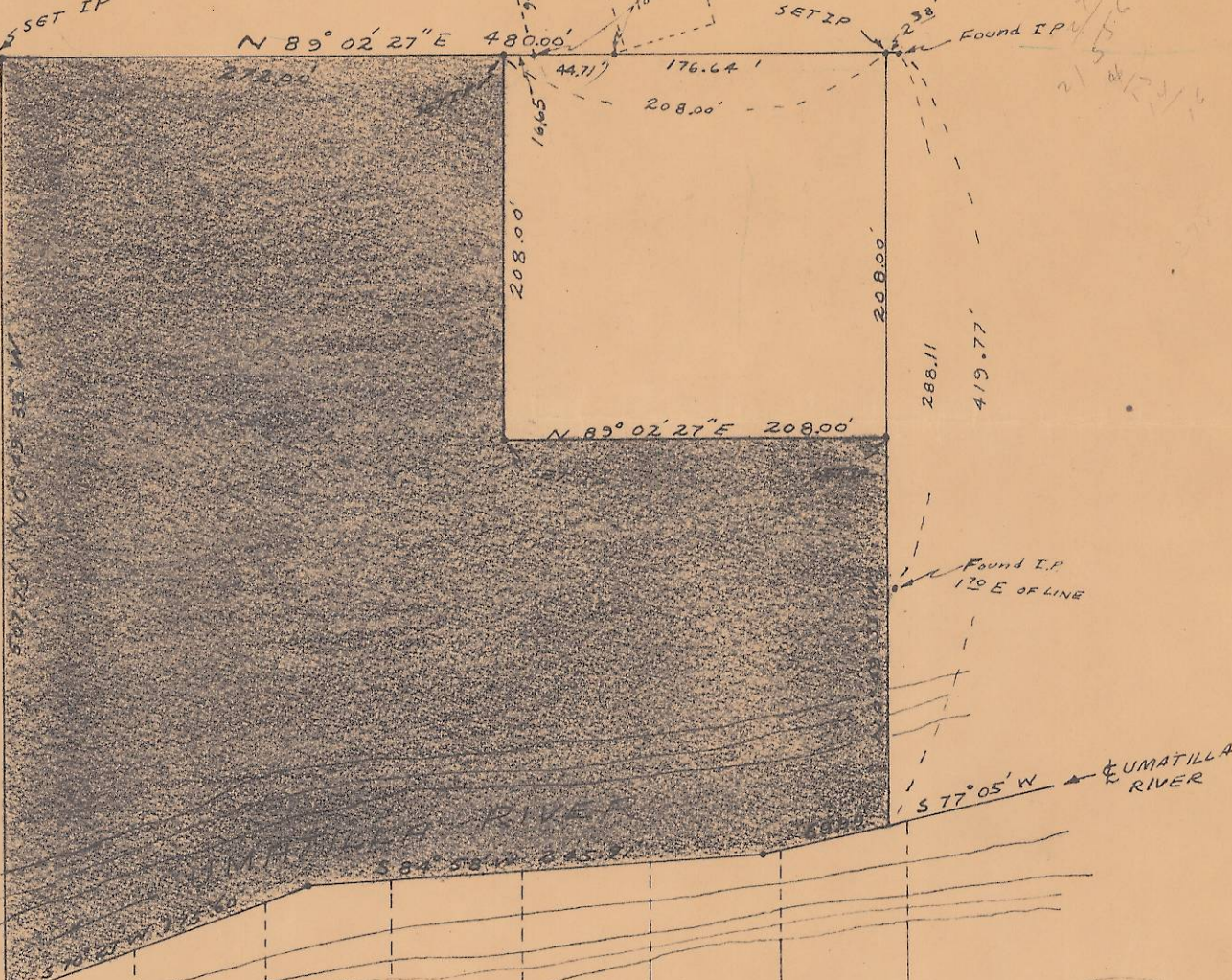


N.W. CORNER OF THE NE 1/4 OF THE SW 1/4 OF SECTION 17 T5N; R28 E.W.M.



1303.33 Computed  
850.53 Computed

59.80'							
103.00'	11	10	9	8	7	6	5
	70	70	70	70	70	70	70

CARELLE ADDITION

(B)

60.00'	VOGEL N 89° 08' 57" E					
120.00'	11	10	9	8	7	6
				(E)		
	12	13	14	15	16	17

Found I.P. at N.W. Cor Lot 11, BLK 1  
center S.W. Cor Sec. 17

REGISTERED PROFESSIONAL ENGINEER  
3758  
STANLEY G. WALLULIS  
OCT 22, 1953  
PENDING

SURVEY OF TRACT FOR HAROLD C. HAWKINS IN: UMATILLA, OREGON  
SCALE: 1" = 100' DATE: FEB 23, 1961

STANLEY G. WALLULIS  
CONSULTING ENGINEER  
PO Box 91  
PENDLETON, OREGON

Q-1092-AX