

A RIVER.

SW.

7 8

St.

6th

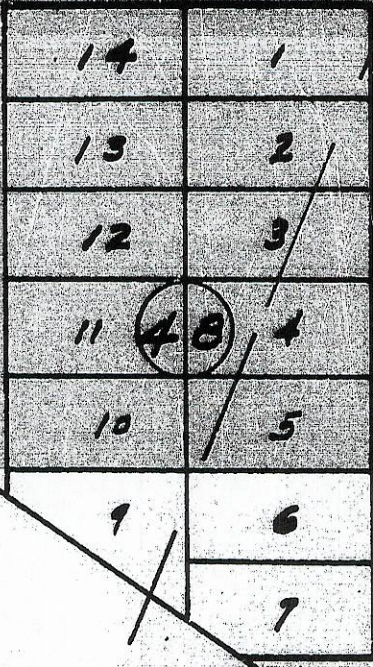
Original Oregon and other

1947 S.E. No. 1497.

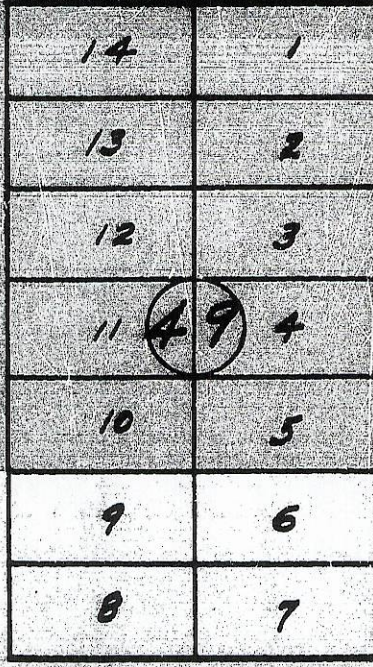
474



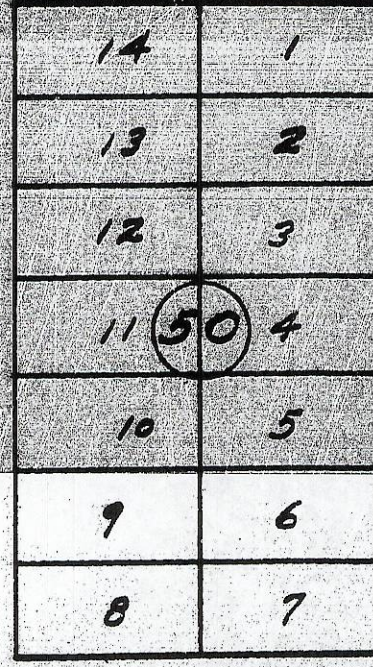
S.W. DORION AVE.



S.W. 11th St.



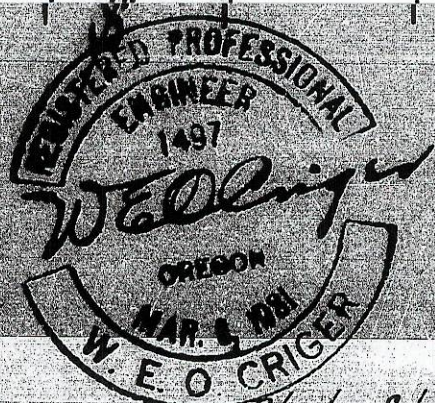
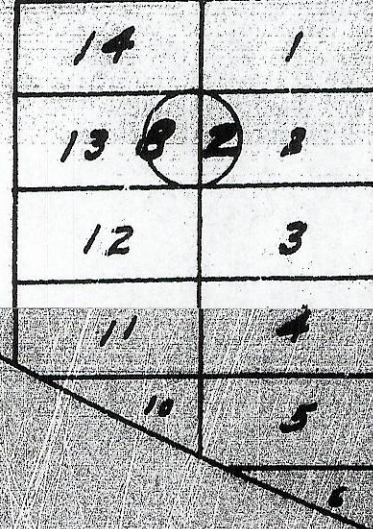
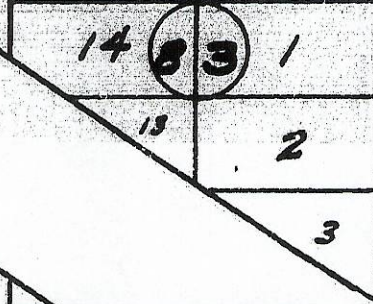
S.W. 10th St.



S.W. 9th St.

Monument No. 1.

S.W. EMIGRANT AVE.



Plat Showing
 Area in Vicinity of S.W. Dorion Ave.,
 S.W. Emigrant Avenue and S.W. 11th St., and
 Portion of S.W. Eleventh Street proposed
 to be Vacated - Pendleton, Washtilla Co., Ore.
 Scale: 1 inch = 100 Feet.

475