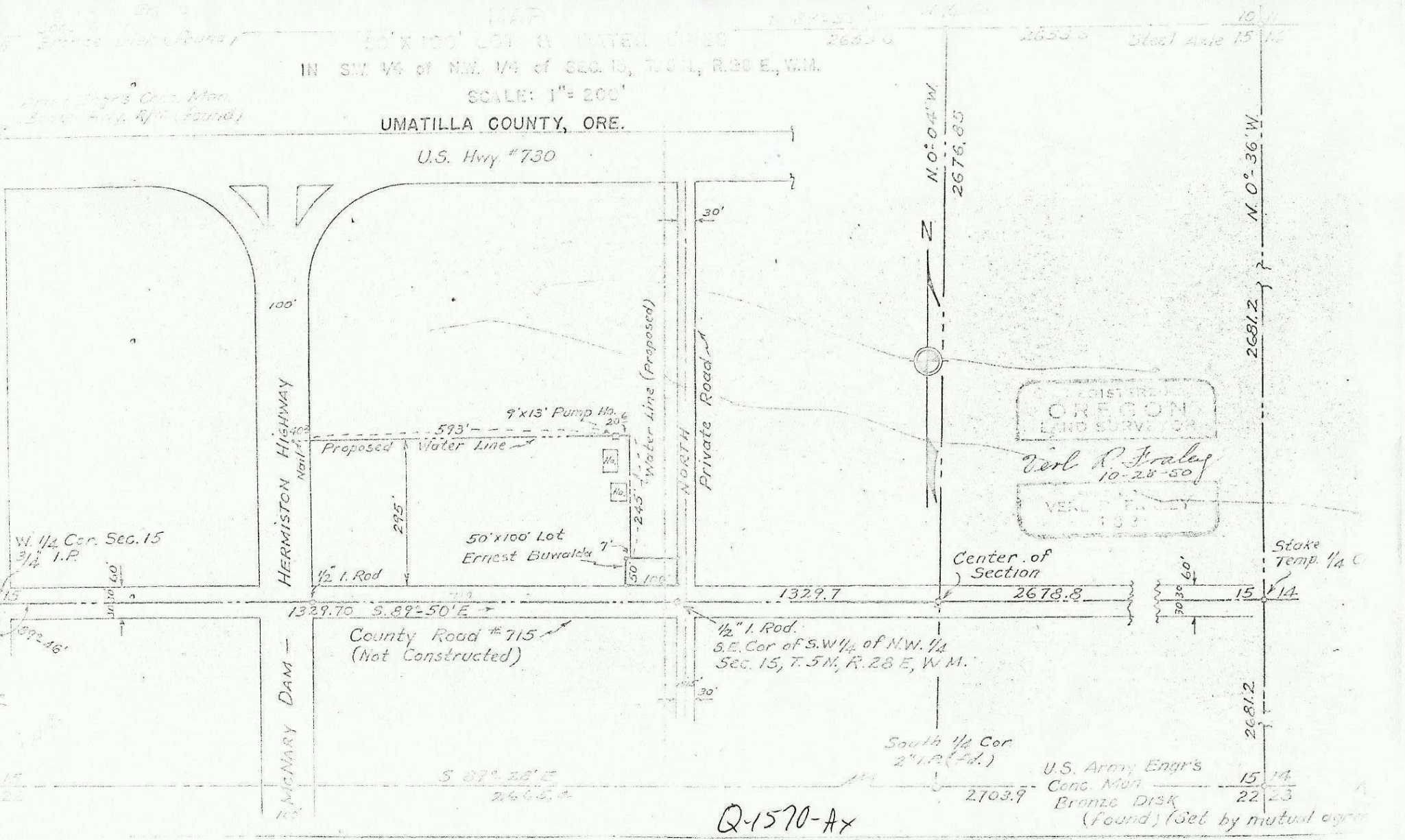


50' X 100' LOT IN WATER LINES
IN SW 1/4 of NW 1/4 of SEC 15, T.5N, R.28 E., W.M.

SCALE: 1" = 200'
UMATILLA COUNTY, ORE.

U.S. Hwy #730



REGISTERED
OREGON
LAND SURVEYOR
Carl R. Fraley
10-28-50
VERIFICATION
193

Center of Section

Stake Temp 1/4

County Road #715
(Not Constructed)

1/2" I. Rod.
S.E. Cor of S.W 1/4 of N.W. 1/4
Sec. 15, T.5N, R.28 E., W.M.

South 1/4 Cor
2" I.R. (fd.)

U.S. Army Engrs
Cenc. Mon
Bronze Disk
(found) (Set by mutual agree

Q-1570-Ax