

REGISTERED
PLAT
OREGON
AND
PLAT
Olms & Roberts
ELMO
1900



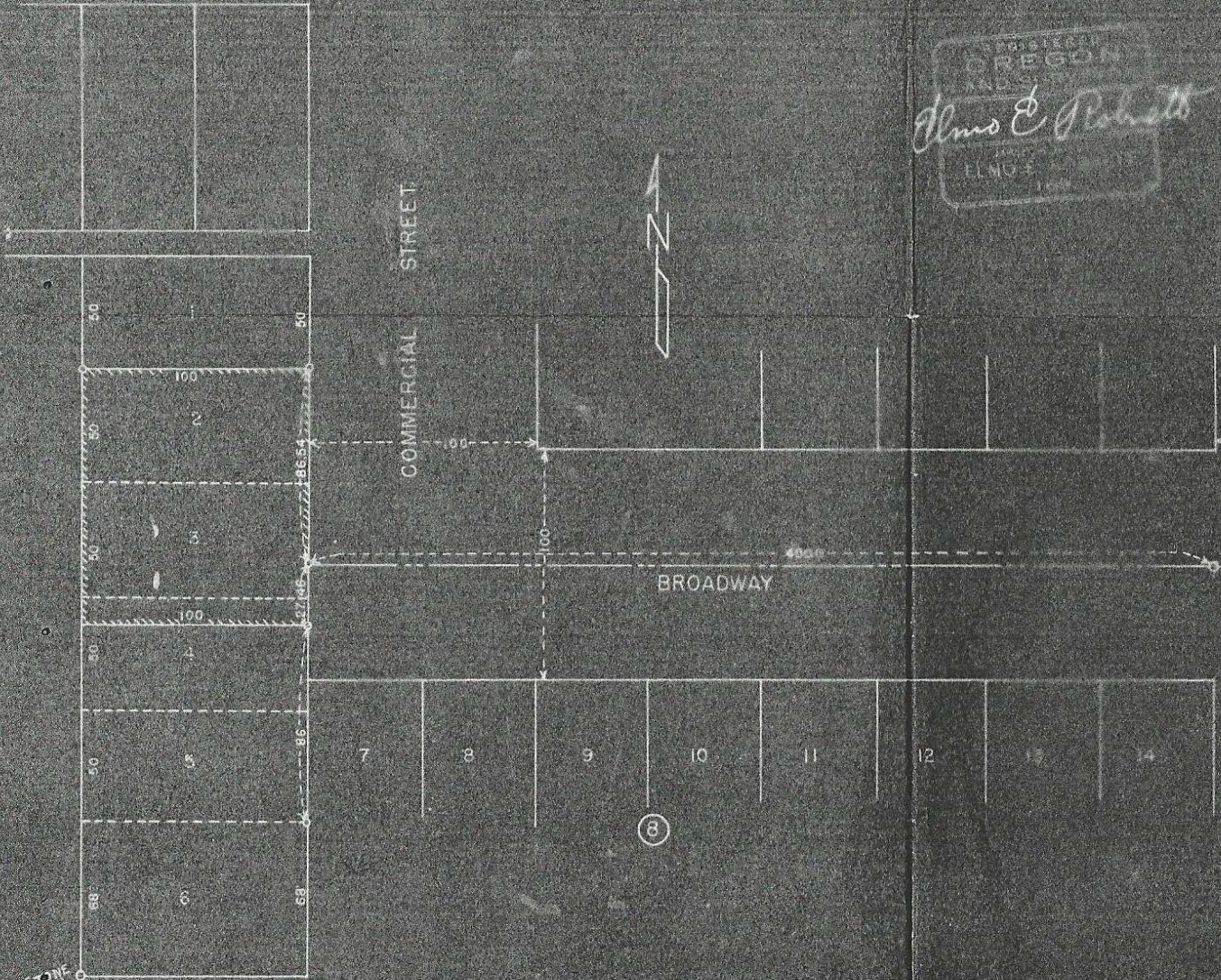
COMMERCIAL STREET

BROADWAY

WARD

STONE
(FOUND)

PLAT
LOTS 2,3 PART OF 4
BLOCK 6
WRIGHT'S ADDITION
MILTON CITY, OREGON
SCALE 1"=20' MAY 1900



Q-1674

1420 Av

Phone 35-F-4

ELMO E. ROBNETT
Registered Land Surveyor

Box 0176
MILTON, OREGON

582

LOTS 2,3 and part of 4,
Block 8, Wright's Addition
Milton City, Oregon

From the Monument at Ward and Broadway and from points I
had previously set in the centerline of Broadway I ran
the property in question as per the duly recorded plat.

Q 1674
5N, 35, Sec 2