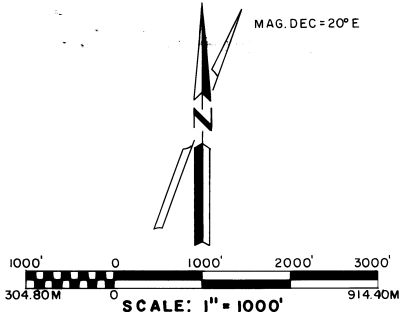


**CORNER ACCESSORIES & MARKS ON BRASS CAP MONUMENTS SET**

See corresponding No. on map below. Twp., Range, date & PLS 848 are also stamped on all monuments. All Bearing Trees are scribed in accordance with B.L.M. Manual of Instruction. See Certified Record of Land Corner Monumentation, as filed in the office of the Umatilla Co. Surveyor, for complete description of History, Evidence Found, Monument Set & Accessories Established. All Bearing Trees have Brass Washers stamped PLS 848 nailed above B.C. scribing & Bearing Tree signs nailed above blaze, painted a red band around each tree at breast height.

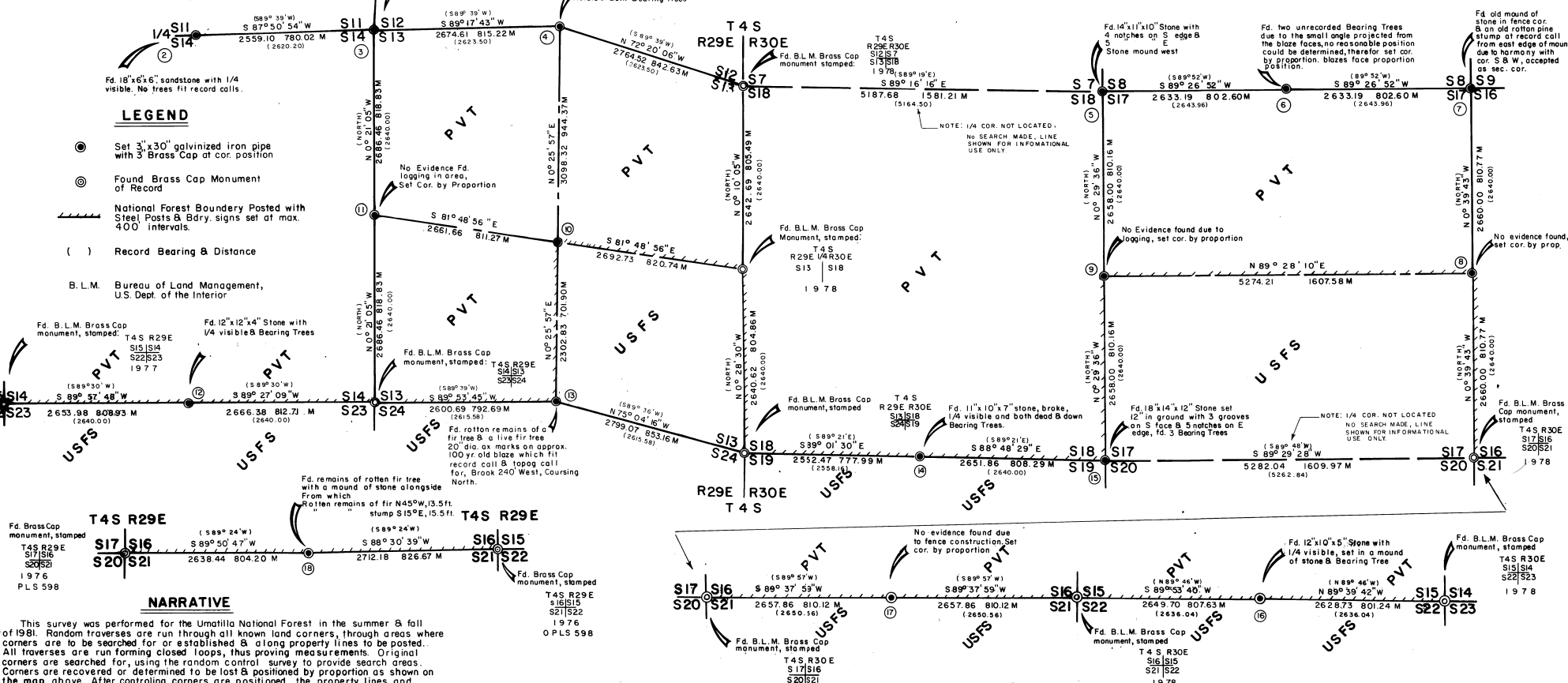
- |  |  |  |
|--|--|--|
| ① 1/4 S11 S12 A Fir 15" dia. Bears N28°W, 16.9 ft.<br>9" dia. Bears S18°E, 14.7 ft.  | ⑦ S8 S9 No Bearing Trees available<br>S17 S16 Set Steel Post North adjacent Cor.             | ⑬ 1/4 S13 A Fir 10" dia. Bears N72°E, 21.7 ft.<br>9" dia. " S16°E, 16.6 ft.  |
| ② 1/4 S11 S14 A Fir 8" dia. Bears N20°W, 24.0 ft.<br>" 15" dia. " South, 42.3 ft.  | ⑧ 1/4 S17 S16 A Pine 11" dia. Bears S20°W, 114.7 ft.<br>" 9" dia. " S63°E, 79.7 ft.          | ⑭ 1/4 S18 S19 A Fir 15" dia. Bears S3°E, 5.7 ft.<br>" 18" dia. " N38°E, 10.5 ft.   |
| ③ S11 S12 A Fir 9" dia. Bears N32°W, 10.1 ft.<br>S14 S15 A " 8" dia. " N33°E, 28.0 ft.<br>" 9" dia. " S55°E, 5.7 ft.<br>" S42°W, 8.7 ft. | ⑨ 1/4 S18 S17 A Fir 16" dia. Bears N18°E, 9.4 ft.<br>" 20" dia. " S52°W, 6.3 ft.             | ⑮ S18 S17 A Pine 12" dia. Bears N43°W, 47.5 ft.<br>A " 5" dia. " N41°E, 16.1 ft.<br>A Fir 12" dia. " S70°E, 33.0 ft.<br>A Pine 9" dia. " S85°W, 22.1 ft. |
| ④ 1/4 S12 S13 A Pine 14" dia. Bears N43°E, 29.2 ft.<br>9" dia. " S37°W, 38.7 ft.   | ⑩ C 1/4 S13 A Fir 14" dia. Bears S72°W, 7.4 ft.<br>A Tamarack 10" dia. Bears S80°E, 40.9 ft. | ⑯ 1/4 S15 S22 A Pine 12" dia. Bears S25°W, 33.4 ft.<br>A Pine 11" dia. " N50°W, 13.4 ft.   |
| ⑤ S7 S8 No Bearing Trees available<br>S16 S17 Set Steel Posts 6' E & 6' W  | ⑪ 1/4 S14 S13 A Pine 12" dia. Bears N45°E, 35.8 ft.<br>A Fir 10" dia. " S38°W, 49.1 ft.      | ⑰ T4S R30E No Bearing Trees available<br>1/4 S16 S21 Set Steel Posts 5'E & 5' W  |
| ⑥ 1/4 S8 S17 No Bearing Trees available<br>Set Steel Posts 6' E & 6' W   | ⑫ 1/4 S14 S23 A Pine 20" dia. Bears N10°W, 18.2 ft.<br>" 13" dia. " S58°W, 55.6 ft.          | ⑱ T4S R29E A Fir 12" dia. Bears N45°W, 13.6 ft.<br>" S2°W, 12.3 ft.  |



**BASIS OF BEARINGS**  
SOLAR OBSERVATION

**LEGEND**

- Set 3"x30" galvanized iron pipe with 3 Brass Cap at cor. position
- ⊙ Found Brass Cap Monument of Record
- National Forest Boundary Posted with Steel Posts & Bdry. signs set at max. 400' intervals.
- ( ) Record Bearing & Distance
- B.L.M. Bureau of Land Management, U.S. Dept. of the Interior



**NARRATIVE**

This survey was performed for the Umatilla National Forest in the summer & fall of 1981. Random traverses are run through all known land corners, through areas where corners are to be searched for or established & along property lines to be posted. All traverses are run forming closed loops, thus proving measurements. Original corners are searched for, using the random control survey to provide search areas. Corners are recovered or determined to be lost & positioned by proportion as shown on the map above. After controlling corners are positioned, the property lines and interior cor. sec. 13 are located.

Electronic distance measuring equipment & theodolite are used in performing the field control and the location of corners & lines. Computing was completed using a Hewlett Packard-85 computer. All field notes, computations & positioning data are on file in the office of Ferguson Surveying & Engineering, Mt. Vernon, Oregon. Douglas M. Ferguson, Registered Professional Surveyor in the State of Oregon, hereby certifies that this plat and the notes hereon or attached are a correct representation of the survey I performed, as outlined above, in accordance with the statute of the State of Oregon and with the articles of my contract.

*Douglas M. Ferguson*  
/s/ Douglas M. Ferguson  
Registered Professional Land Surveyor  
Oregon Licence 848

**HISTORY**

T4S, R.29E Surveyed in 1882, by Edward W. Sanderson under General Land Office contract No. 417.  
T4S, R.30E Surveyed in 1882, by George S. Pershin under General Land Office contract No. 430.  
In 1976, Or. PLS 598 re-monumented corners as shown on the map above.  
In 1978, the B.L.M. re-monumented corners as shown on the map above.

REGISTERED PROFESSIONAL LAND SURVEYOR  
*Douglas M. Ferguson*  
OREGON  
JULY 12, 1966  
DOUGLAS M. FERGUSON  
848

**FERGUSON SURVEYING & ENGINEERING**  
MT. VERNON, OR.  
MAP OF SURVEY  
FORIST BOUNDARY, BETWEEN SEC. 14 & 23, 13 & 24, IN SEC. 13 T4S, R29E, W.M. AND BETWEEN SEC. 19 & 19, 18 & 17, THE E-W CENTER LINE OF SEC. 17, BETWEEN SEC. 17 & 16, & 21 & 8 SEC. 18 & 21 T4S, R.30E, W.M.  
UMATILLA COUNTY OREGON  
FOR: UMATILLA NATIONAL FOREST BY: DOUGLAS M. FERGUSON  
DATE: May - Oct. 1981 SHEET 1 of 1  
SCALE: 1" = 1000' DRAWN BY: D.M.F.