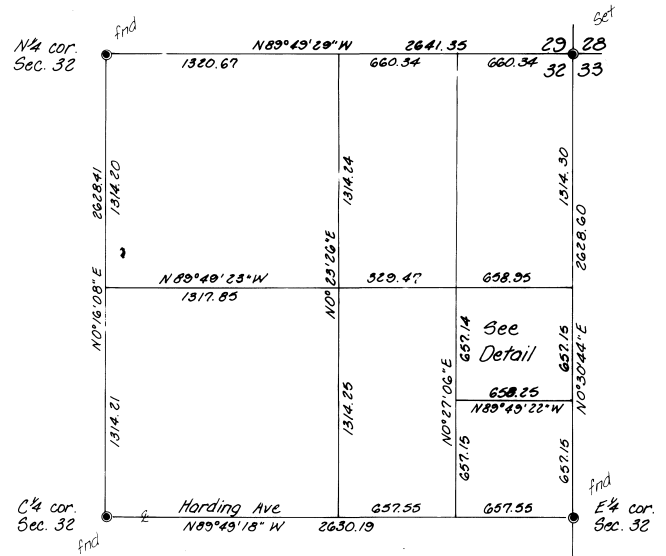
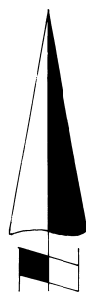


NE 1/4, SE 1/4, NE 1/4, Sec. 32, T4N, R29E, W.M.

scale: 1" = 200'



NE 1/4, Sec. 32, T4N, R29E, W.M.

scale: 1" = 500'

**NARRATIVE:**

Purpose of this survey was to establish the boundaries of a 3.00 acre tract. This tract is a partition from that tract described on Page 255 of Volume 183 of the Deed Records of Umatilla County. The Northeast quarter of Section 32 was broken down, based upon a survey by Verl Fraley, by Denny Edwards, P.L.S., Umatilla County Surveyor dwg. no. 82-24-B. The West and South lines of the quarter are also as shown on a survey for Umatilla County Surveyor dwg. no. 5-158-C. Bearings are based upon C.S. dwg. no. 82-24-B.

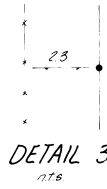
- denotes Brass Cap as noted
- denotes 3/8" iron pin w/alum. cap stamped PLS. 933
- denotes fence



DETAIL 1  
177.9



DETAIL 2  
177.9



DETAIL 3  
177.9

<b>KRUMBEIN ENGINEERING LTD.</b> ENGINEERS - SURVEYORS - PLANNERS 361 S.E. Second Pendleton, Oregon	Scale as shown	Drn. By M.L.D.	Drng. No. 83-15C	Revision 1
	Date 4-1-83	Chk. By D.H.A.	Job No. 83-29	Revision 2
Survey for <b>ETHYL LEE</b>  SE 1/4, NE 1/4, Sec. 32 T4N, R29E, W.M.				RECEIVED BY Umatilla County Surveyor Date 5-6-83 Rec'd By <u>blee</u> No. 83-79-B