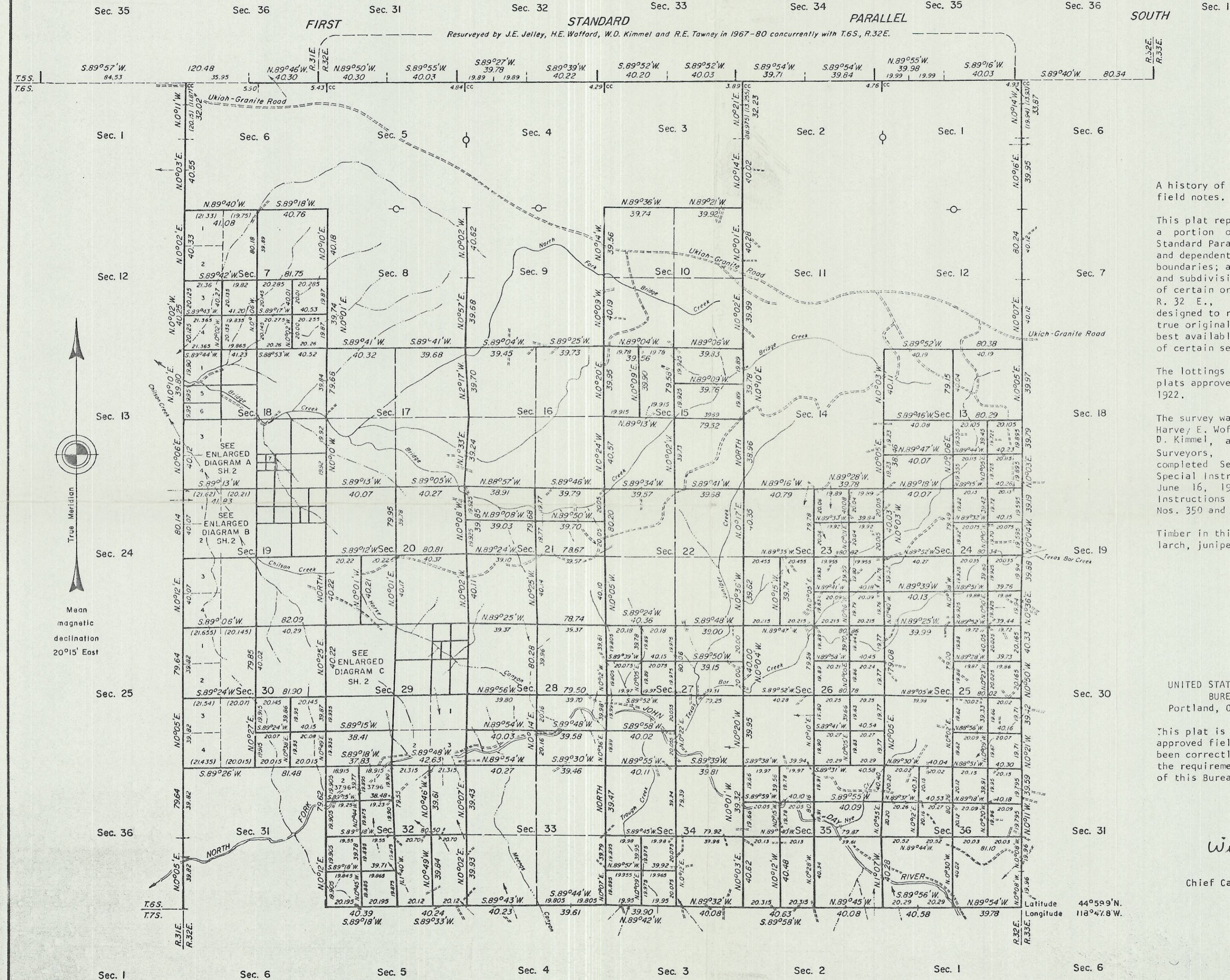


# TOWNSHIP 6 SOUTH, RANGE 32 EAST, OF THE WILLAMETTE MERIDIAN, OREGON.

## DEPENDENT RESURVEY, SUBDIVISION OF SECTIONS, AND REMONUMENTATION



A history of surveys is contained in the field notes.

This plat represents a dependent resurvey of a portion of the south boundary (First Standard Parallel South), T. 5 S., R. 31 E., and dependent resurvey of the east and west boundaries; a portion of the south boundary and subdivisional lines; and remonumentation of certain original corner points, T. 6 S., R. 32 E., Willamette Meridian, Oregon, designed to restore the corners in their true original locations according to the best available evidence, and the subdivision of certain sections.

The lottings and areas are as shown on the plats approved January 7, 1884 and June 6, 1922.

The survey was executed by James E. Jelley, Harvey E. Wofford, Craig L. Wanless, William D. Kimmel, and Rick E. Tawney, Cadastral Surveyors, beginning August 24, 1967 and completed September 26, 1980, pursuant to Special Instructions dated May 3, 1957 and June 16, 1967, and Supplemental Special Instructions dated July 25, 1978, for Group Nos. 350 and 643, Oregon.

Timber in this area consists of pine, fir, larch, juniper, spruce, and alder.

UNITED STATES DEPARTMENT OF THE INTERIOR  
BUREAU OF LAND MANAGEMENT  
Portland, Oregon June 30, 1983

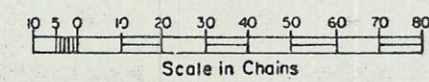
This plat is strictly conformable to the approved field notes, and the survey, having been correctly executed in accordance with the requirements of law and the regulations of this Bureau, is hereby accepted.

For the Director

*William W. Glenn*

Chief Cadastral Surveyor of Oregon

Latitude  $44^{\circ}59'N$   
Longitude  $118^{\circ}47'W$



RECEIVED BY

Umatilla County Surveyor

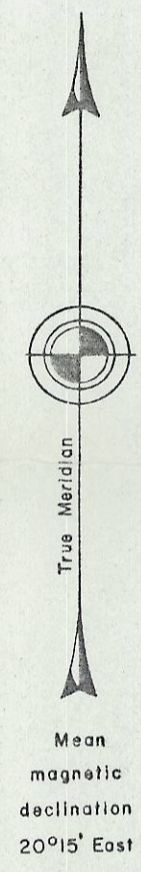
Date 9-83

Rec'd by bc

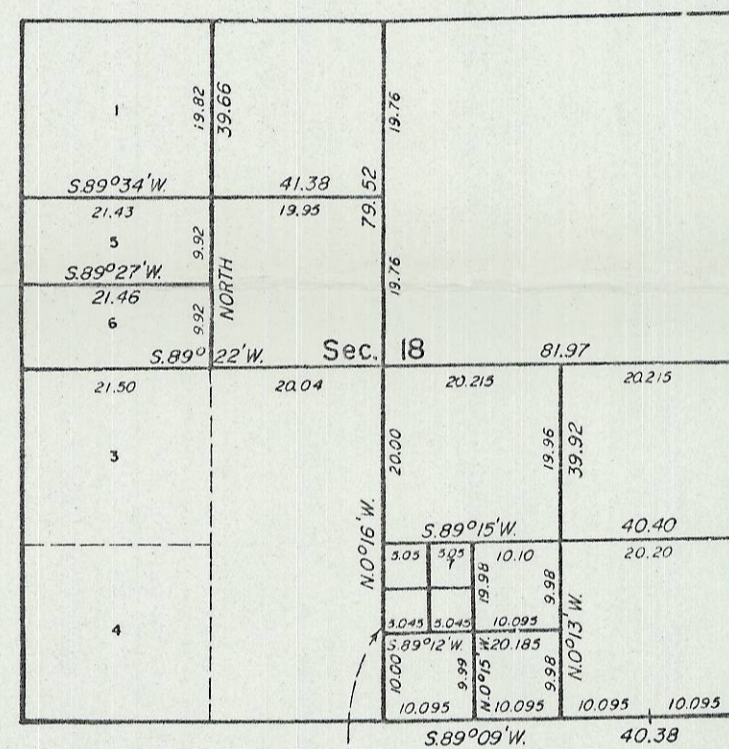
No. 83-179-BD

# TOWNSHIP 6 SOUTH, RANGE 32 EAST, OF THE WILLAMETTE MERIDIAN, OREGON.

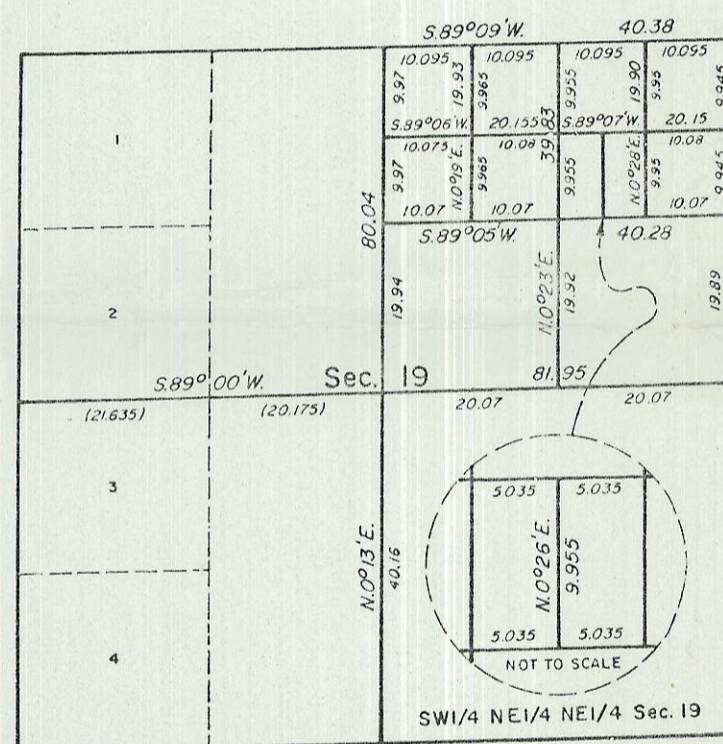
## DEPENDENT RESURVEY, SUBDIVISION OF SECTIONS, AND REMONUMENTATION



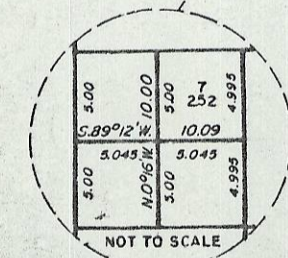
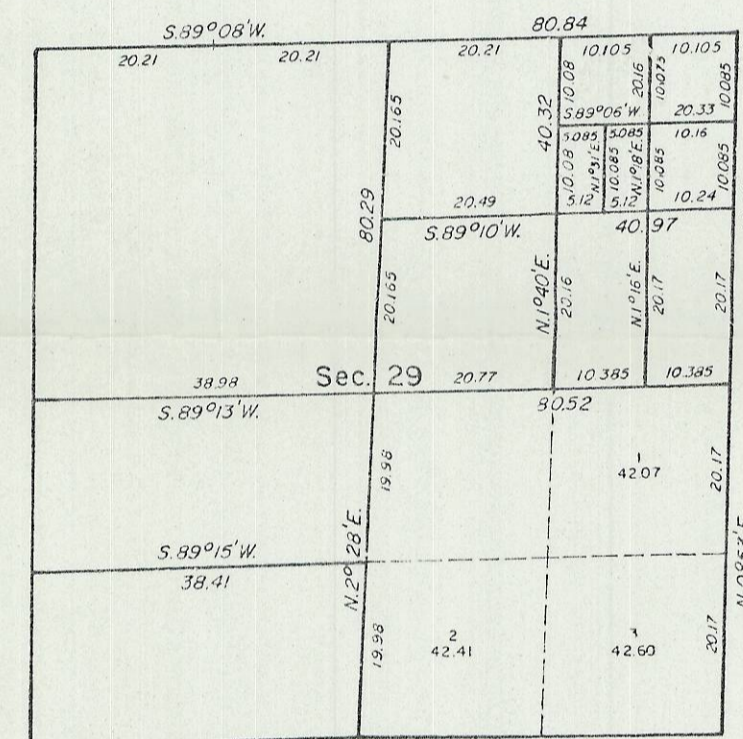
ENLARGED DIAGRAM A



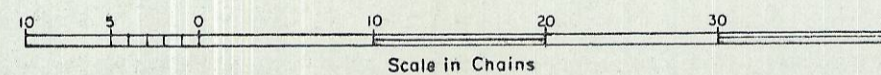
ENLARGED DIAGRAM B



ENLARGED DIAGRAM C



NW 1/4 SW 1/4 SE 1/4 Sec. 19



UNITED STATES DEPARTMENT OF THE INTERIOR  
 BUREAU OF LAND MANAGEMENT  
 Portland, Oregon June 30, 1983

This plat is strictly conformable to the approved field notes, and the survey, having been correctly executed in accordance with the requirements of law and the regulations of this Bureau, is hereby accepted.

For the Director

*William W. Glenn*

Chief Cadastral Surveyor of Oregon

RECEIVED BY  
 Umatilla County Surveyor  
 Date 9-83  
 Rec'd By bc  
 No. 83-179-BB