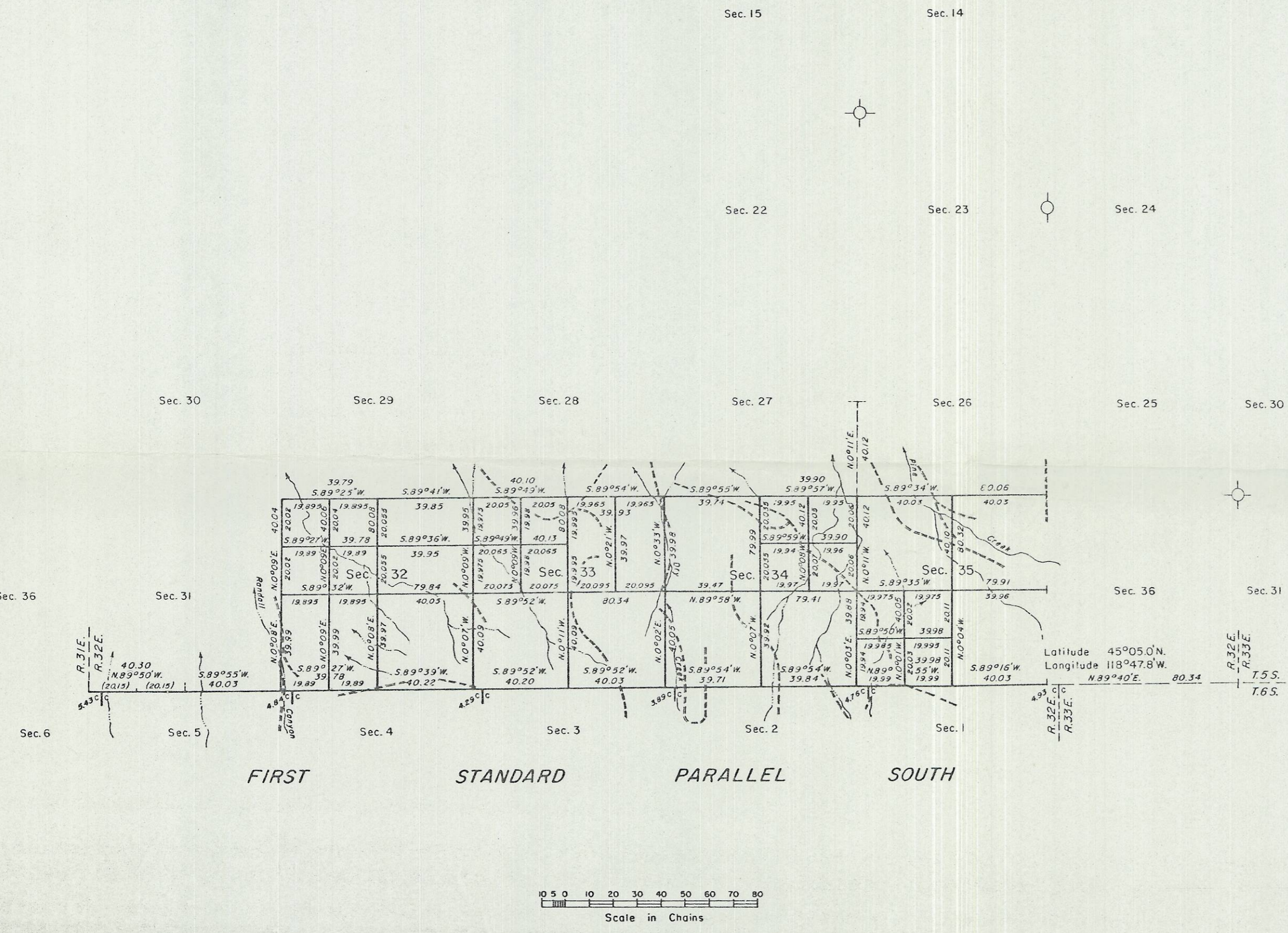
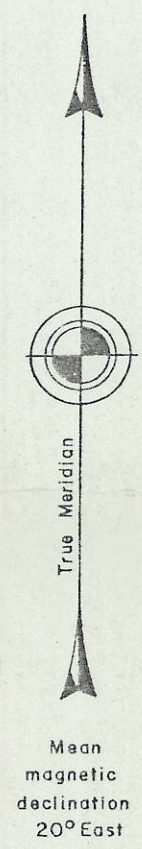


TOWNSHIP 5 SOUTH, RANGE 32 EAST, OF THE WILLAMETTE MERIDIAN, OREGON.
 DEPENDENT RESURVEY, SUBDIVISION OF SECTIONS 32, 33, 34, AND 35, AND REMONUMENTATION OF CORNERS



A history of surveys is contained in the field notes.

This plat represents a dependent resurvey of a portion of the south boundary, (First Standard Parallel South), a portion of the subdivisional lines and the remonumentation of certain original corners designed to restore the corners in their true original locations according to the best available evidence, T. 5 S., R. 32 E., Willamette Meridian, Oregon, and the subdivision of sections 32, 33, 34, and 35.

The lottings and areas are as shown on the plat approved August 22, 1881.

The survey was executed by James E. Jelley, Harvey E. Wofford, William D. Kimmel, and Rick E. Tawney, Cadastral Surveyors, beginning August 24, 1967 and completed June 9, 1980, pursuant to Special Instructions dated May 3, 1957 and June 16, 1967, and Supplemental Special Instructions dated July 25, 1978, for Group Nos. 350 and 643, Oregon.

Timber in this area consists of pine, fir, and larch.

UNITED STATES DEPARTMENT OF THE INTERIOR
 BUREAU OF LAND MANAGEMENT
 Portland, Oregon June 30, 1983

This plat is strictly conformable to the approved field notes, and the survey, having been correctly executed in accordance with the requirements of law and the regulations of this Bureau, is hereby accepted.

For the Director

William W. Glenn

Chief Cadastral Surveyor of Oregon

RECEIVED BY
 Umatilla County Surveyor
 Date 7-83
 Rec'd By [Signature]
 No. 83-180-5B