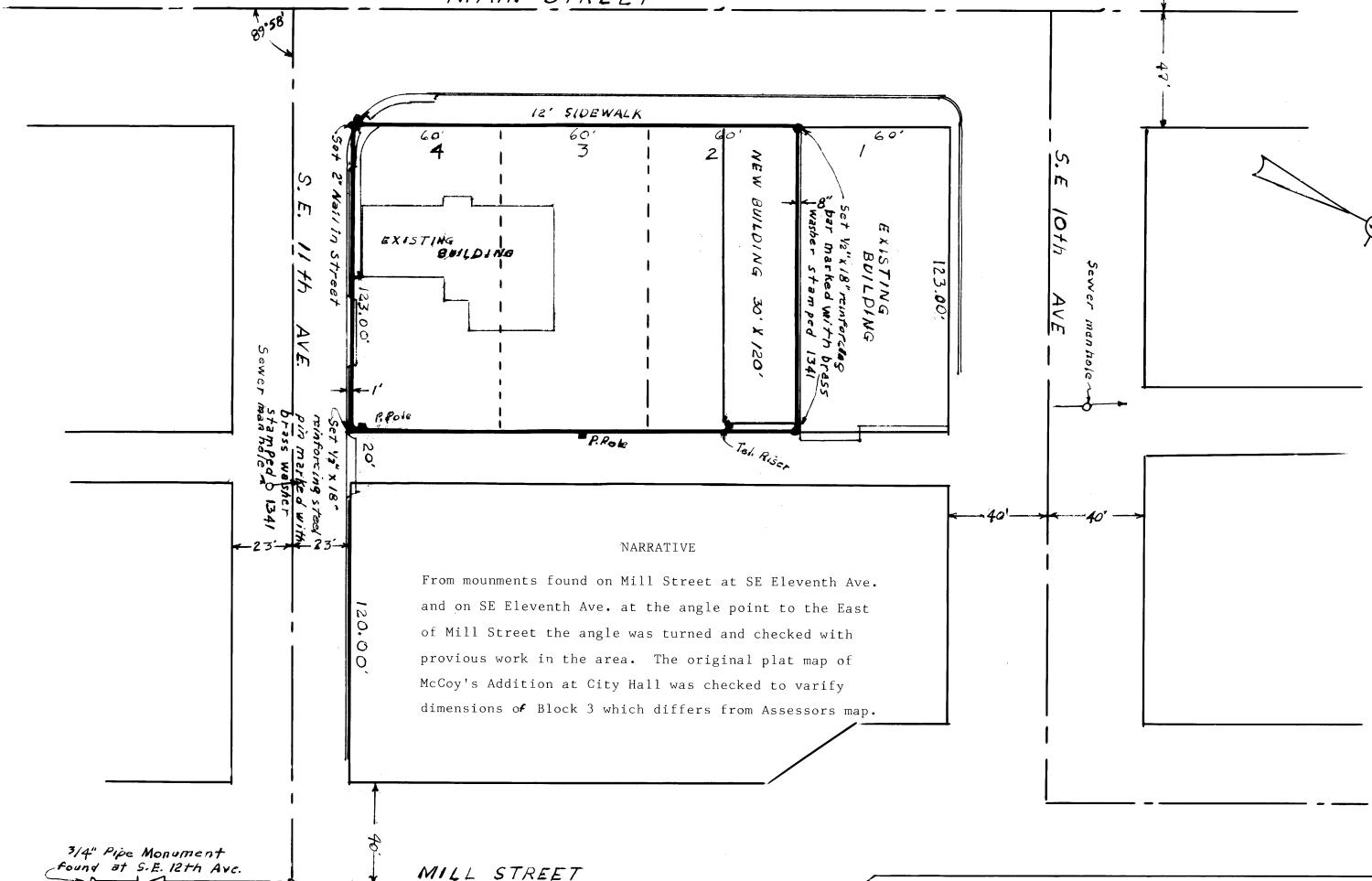


MAIN STREET



NARRATIVE

From monuments found on Mill Street at SE Eleventh Ave. and on SE Eleventh Ave. at the angle point to the East of Mill Street the angle was turned and checked with previous work in the area. The original plat map of McCoy's Addition at City Hall was checked to verify dimensions of Block 3 which differs from Assessors map.

3/4" Pipe Monument Found at S.E. 12th Ave.

3/4" Pipe Monument found  
5/8" Steel pin found at street angle point

SE 1/4 NW 1/4 Sec. 12 T.5N., R.95E W.W.

PLAT MAP  
 SALLEE CHEVROLET, INC.  
 LOTS 2, 3, 4 of BLOCK 3 MCCOY'S  
 ADDITION TO TOWN OF MILTON  
 SCALE 1" = 40'  
 MAR. 5, 1990

Cary W. ~~Strom~~

930 HOME ST.  
 WALLA WALLA, WA  
 99362

Cary W. ~~Strom~~  
 LAND SURVEYOR

NO. 90-28-B