



0' 20' 40' 80'  
SCALE IN FEET

**LEGEND:**

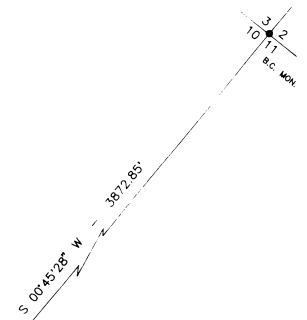
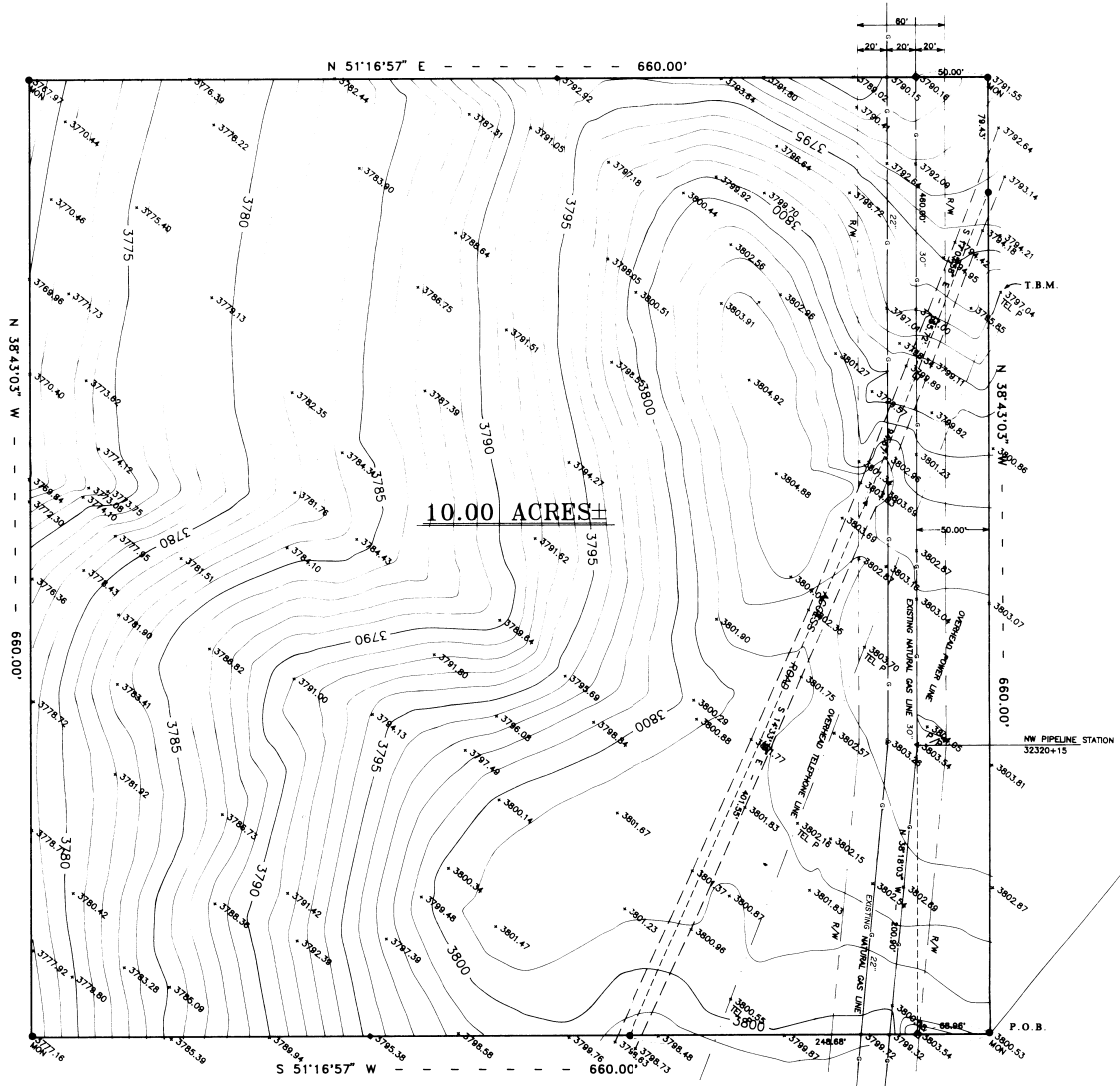
- SET 5/8" DIA. X 30" IRON ROD WITH PLASTIC CAP, #872
- SET HUB.
- CALC. CORNER, NOT SET

**NOTES:**

BEARINGS BASED ON THE SOUTHERLY RIGHT OF WAY OF U.S. HIGHWAY 1-84  
NARRATIVE FIELD NOTES FILED SEPARATELY

**TEMP. BENCH MARK**

FOUND SPIKE IN TELEPHONE POLE, #1044, T.B.M. ELEV. 3798.10.



Date	Rev.	Revision	By	App.
SURVEY OF <b>MEACHAM COMPRESSOR STATION</b> FOR NORTHWEST PIPELINE CORP. SECTION 10, T1 S, R.35 E, W.M. UMATILLA COUNTY, OREGON				
Drawn <b>T.E.C.</b>	Checked <b>E.H.</b>	Approved	Scale 1"=40'	Date 8/26/71
TENNESON ENGINEERING CORP. Consulting Engineers 409 Lincoln Street Oregon				
Northwest Pipeline Corp. 7593			Sheet 1 of 1	

CONSULTING  
**Engineers** TENNESON ENGINEERING CORPORATION

PHONE (503) 296-9177  
 409 LINCOLN STREET  
 THE DALLES, ORE. 97058

October 31, 1991

**FIELD NOTES:** Northwest Pipeline Corporation  
 Work Order No. 7593

**CREW:** David L. Tuttle, Partychief  
 Douglas Stroh, Assistant

**EQUIPMENT:** Wild T-1600 E.D.M. & 1" Theodolite. Relative accuracy  
 of the survey is a close traverse of 1 part in 65,000.

**DATE COMPLETED:** September 20, 1991

**REFERENCE:** Alignment Map of 84 N  
 Northwest Alignment Drawing #1400-183  
 Umatilla County Surveyor Corner Reference Material

A survey in Section 10,  
 Township 1 South, Range 35 East,  
 Willamette Meridian, Umatilla County, Oregon

On May 10, 1991, our firm was retained by Northwest Pipeline, Inc. to survey and set boundaries for a proposed compressor station along their existing natural gas pipeline near Meacham, Oregon.

Copies of existing surveys, corner references, and alignment maps were obtained at the Umatilla County Surveyor's Office and the Oregon State Highway Department.

The site was surveyed by determining the location of Northwest Pipeline's buried gas line and then laying off a 660' x 660' site parallel with and at right angles to said pipeline. An existing private road, providing access from said site to Highway 85, was traversed and tied into said site survey.

Bearings are based on O.S.H.D. data from a tie made to the right-of-way monuments of said Highway 85. Corners set are 5/8" x 30" rebar with yellow plastic caps marked L.S.#872.

RECEIVED  
 Umatilla County Surveyor's Office  
 Date 12-91  
 Rec'd By KK  
 No. 91-108-B