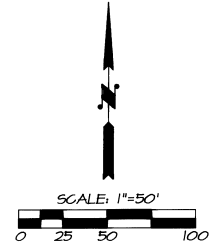
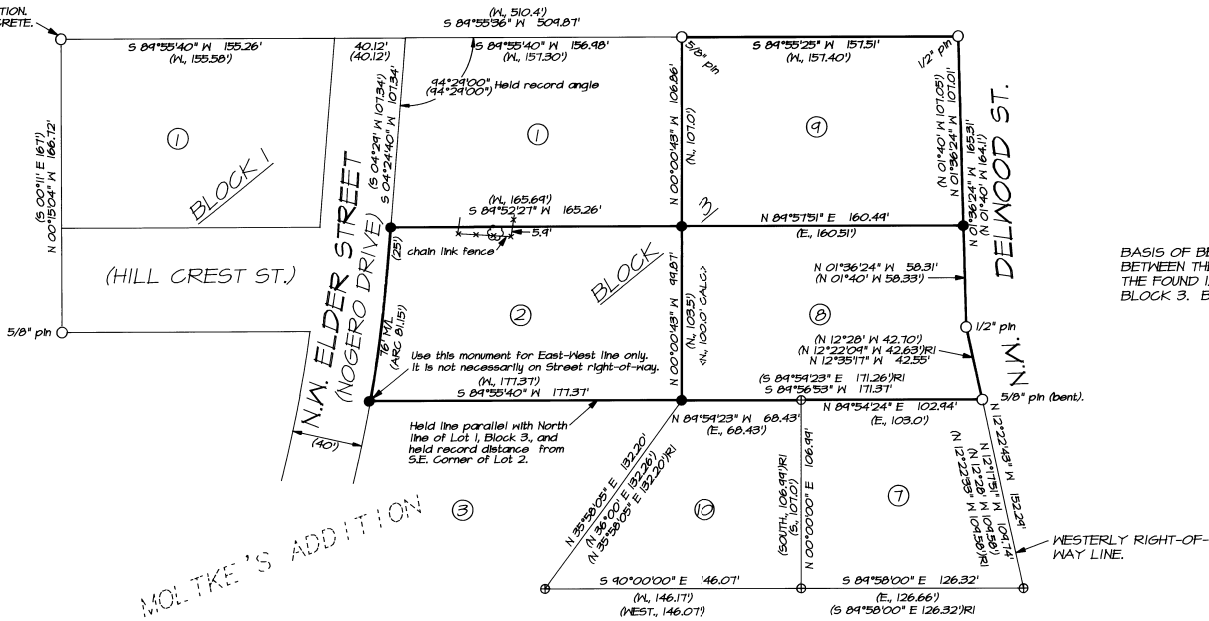


INITIAL POINT OF MOLTKE'S ADDITION.
FOUND 1/2" BRASS CAP IN CONCRETE.



BASIS OF BEARINGS: SURVEY NO. 82-127-B, AS DETERMINED BETWEEN THE INITIAL POINT OF MOLTKE'S ADDITION AND THE FOUND 1/2" IRON PIN ON THE EAST LINE OF LOT 8, BLOCK 3. BEARING = S 72°15'36" E.

MOLTKE'S ADDITION

NARRATIVE OF SURVEY

THIS SURVEY WAS MADE AT THE REQUEST OF JOHN AND LINDA WHITBECK TO MONUMENT THE BOUNDARIES OF LOTS 2, 8 AND 9, BLOCK 3, MOLTKE'S ADDITION, PILOT ROCK, OREGON.

IN 1982, CORNERS OF LOTS 7 AND 10, BLOCK 3, AND CERTAIN OTHER CORNERS WERE RECOVERED OR RE-ESTABLISHED UNDER SURVEY NO. 82-127-B. SUBSEQUENT CONSTRUCTION ACTIVITY HAS DESTROYED OR DISTURBED MOST OF THE CORNER MONUMENTS NOTED IN THE 1982 SURVEY.

THE PRESENT SURVEY WAS MADE BY RECOVERING CERTAIN CORNER MONUMENTS FOUND OR PLACED IN THE 1982 SURVEY, THEN RECALCULATING CORNER POSITIONS FOR MISSING CORNERS. THESE RECALCULATED CORNER LOCATIONS, TOGETHER WITH OTHER MOLTKE PLAT MONUMENTS FOUND, WERE USED IN LOCATING THE WHITBECK LOTS.

SIGNIFICANT CALCULATION ERRORS EXIST IN THE MOLTKE ADDITION PLAT. MOST OF THE ERRORS OCCUR IN LINE AND CURVE INTERSECTIONS WHERE LOT LINES ADJOIN CURVED STREETS. COMPLETE RESOLUTION OF THE LOT LINE - CURVE INTERSECTION AND OTHER CALCULATION PROBLEMS WOULD NOT BE POSSIBLE WITHOUT A COMPLETE RESURVEY OF THE ENTIRE SUBDIVISION PLAT. THE SOUTHWEST CORNER OF LOT 2, BLOCK 3, AS PLACED ON THIS SURVEY, SHOULD BE USED ONLY FOR EAST-WEST ALIGNMENT FOR THE SOUTH LINE OF LOT 3 -- IT IS NOT NECESSARILY ON THE STREET RIGHT-OF-WAY LINE. THE WEST LINE OF LOT 8 BLOCK 3, CONTAINS A PLAT CALCULATION ERROR OF 3.5 FEET. THE CORRECT PLAT DISTANCE FOR THIS LINE SHOULD BE 100.0 FEET INSTEAD OF 103.5 FEET. THE RECORD ARC DISTANCE OF 81.5 FEET ON THE WEST LINE OF LOT 2, BLOCK 3, IS IN ERROR.

THIS SURVEY WAS MADE WITH A SET 3B AUTOMATIC TOTAL STATION WITH STANDARD ERRORS OF 3 PLUS OR MINUS SECONDS ANGULAR, AND 5MM, PLUS OR MINUS 3 PARTS PER MILLION TIMES DISTANCE FOR DISTANCE MEASUREMENT.

LEGEND

- - SET 5/8" BY 30" IRON PIN WITH 1/2" YELLOW PLASTIC CAP MARKED "OR PLS 1106 - WA PLS 17312".
- - 1/2" OR 5/8" IRON PIN FOUND FROM MOLTKE'S ADDITION PLAT UNLESS OTHERWISE NOTED.
- ⊕ - POSITION OF MONUMENT SET OR FOUND ON SURVEY NO. 82-127-B. THESE MONUMENTS HAVE BEEN DESTROYED BY CONSTRUCTION.
- (XOX) - MOLTKE'S ADDITION PLAT RECORD.
- (XOX)RI - RECORD FROM SURVEY NO. 82-127-B.

RECEIVED BY
 William R. Wells
 Date: 6-94
 Initials: KR
 No. 94-62-B

REGISTERED PROFESSIONAL LAND SURVEYOR
Will. R. Wells
 OREGON
 JULY 22, 1977
 WILLIAM R. WELLS
 1106
 EXPIRES 12/31/94

WILLIAM R. WELLS, PLS
 357 N.E. HWY. 11
 P.O. BOX 1696
 PENDELTON, OR 97801
 PHONE: (503) 276-6362
 DATE: 5/25/94 DR. BY: WRW
 CK. BY: WRW NO: 94-230

PROJECT:
 SURVEY FOR
 JOHN AND LINDA WHITBECK
 OF
 LOTS 2, 8 AND 9,
 BLOCK 3, MOLTKE'S ADDITION,
 PILOT ROCK, OREGON.
 LOCATED IN THE NE 1/4 OF
 SECTION 17, T15, R32E, W1M,
 UMATILLA COUNTY, OREGON.

WBECK