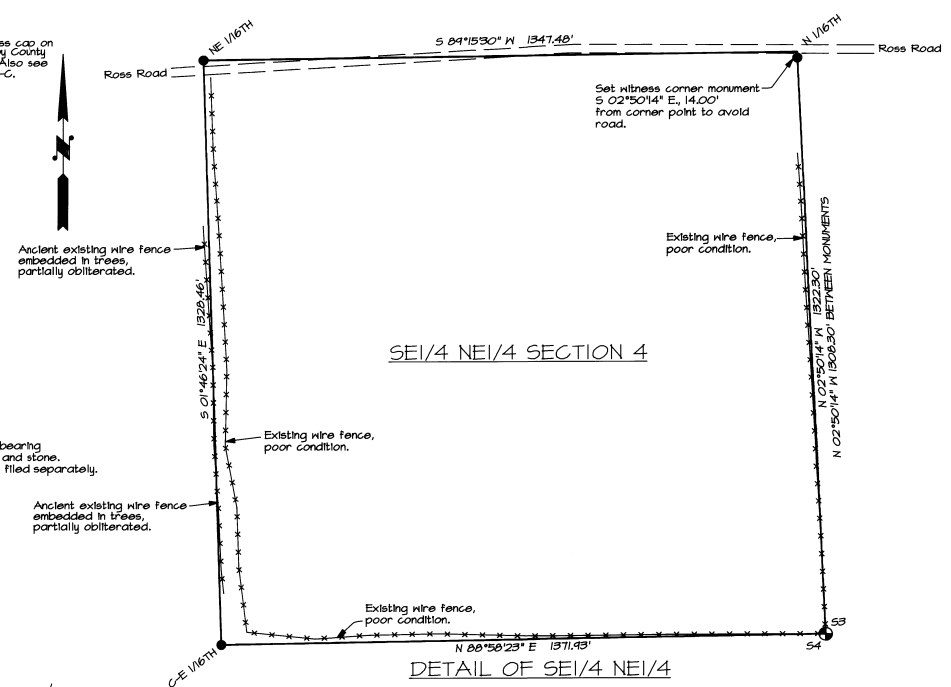


- LEGEND**
- SET 2 1/2" BRASS CAP ON 1 1/2" BY 30" GALV. IRON PIPE FROM EXISTING, ORIGINAL GLO EVIDENCE. CORNER RECORD FILED SEPARATELY.
 - MONUMENT FOUND AS NOTED.
 - SET 5/8" BY 30" IRON ROD WITH 1 1/2" PLASTIC CAP MARKED "OR PLS 1106 WA PLS 17312". SET STEEL FENCE POST NEAR MONUMENT WITH "WITNESS" SIGN ATTACHED.
 - EXISTING FENCE.
 - (XOX) GLO RECORD BY CURRIN AND NOLAND UNDER SPECIAL CONTRACT DATED MAY 4, 1887.
 - (XOX)RI RECORD DIMENSION FROM SURVEY NO. 83-140-C.
 - (XOX)R2 RECORD DIMENSION FROM SURVEY NO. 45-16-C.



NARRATIVE OF SURVEY

THIS SURVEY WAS MADE FOR THE PURPOSE OF MONUMENTING AND POSTING THE EAST, WEST, AND SOUTH LINES OF THE SOUTHEAST QUARTER OF THE NORTHEAST QUARTER OF SECTION 4, T15., R35E., W.M..

THE SOUTH QUARTER CORNER OF SECTION 4 AND THE SECTION CORNER COMMON TO SECTIONS 3, 4, 9 AND 10 WERE NOT FOUND AND SUBSEQUENTLY DECLARED LOST. ORIGINAL ACCESSORY BEARING TREES WERE RECOVERED FOR THE QUARTER CORNER BETWEEN SECTIONS 3 AND 4, THE QUARTER CORNER BETWEEN SECTIONS 3 AND 10, AND THE QUARTER CORNER BETWEEN SECTIONS 9 AND 10. THESE RECOVERED CORNER POSITIONS WERE REMONUMENTED AS DESCRIBED IN THE LEGEND AND CERTIFIED RECORDS OF LAND CORNER MONUMENTATION ARE FILED SEPARATELY FOR EACH OF THEM. FROM THESE CONTROLLING CORNERS, THE POSITION OF THE SECTION CORNER COMMON TO SECTIONS 3, 4, 9 AND 10 WAS CALCULATED BY DOUBLE PROPORTIONATE MEASUREMENT. THE POSITION OF THE SOUTH QUARTER CORNER OF SECTION 4 WAS THEN CALCULATED BY SINGLE PROPORTIONATE MEASUREMENT. SECTION 4 WAS THEN MATHEMATICALLY SUBDIVIDED AND THE CORNER POSITIONS OF THE SOUTHEAST QUARTER OF THE NORTHEAST QUARTER DETERMINED. THESE CORNER POSITIONS WERE THEN MONUMENTED AS SHOWN AND DESCRIBED IN THE LEGEND. THE BASIS OF BEARING FOR THIS SURVEY IS AS SHOWN.

SURVEY MEASUREMENTS WERE MADE WITH A LIETZ SET 3B, 1-SECOND TOTAL STATION BY A COMBINATION OF CLOSED CONTROL TRAVERSE AND RADIAL TIES. CORNER MONUMENTS TIED AND MONUMENTS ESTABLISHED BY RADIAL METHODS WERE VERIFIED BY SEPARATE OBSERVATIONS.

REGISTERED PROFESSIONAL LAND SURVEYOR <i>Will. R. Weel</i> OREGON JULY 22, 1977 WILLIAM R. WELLS 1106 RENEWS 6/30/96	WILLIAM R. WELLS, PLS 357 N.E. HWY. 11 P.O. BOX 1696 PENDLETON, OR 97801 PHONE: (503) 276-6362	PROJECT: SURVEY FOR: FOREST RECOVERY, INC.
	DATE: 12/21/95 CK. BY: WRW	DR. BY: WRW NO: 45-955

12-95
KK
95-221-B