

**NOTE:**  
 BEARINGS ARE TRUE, BASED ON OREGON COORDINATE SYSTEM, NORTH ZONE GRID.  $\phi = +0^{\circ}58'13''$   
 C.F. = 0.99990723

**REFERENCES:**  
 P.G.T. DRAWING NUMBER  
 520-C-A-3, JUNE 10, 1980.  
 BY TENNESON ENGR. CORP.

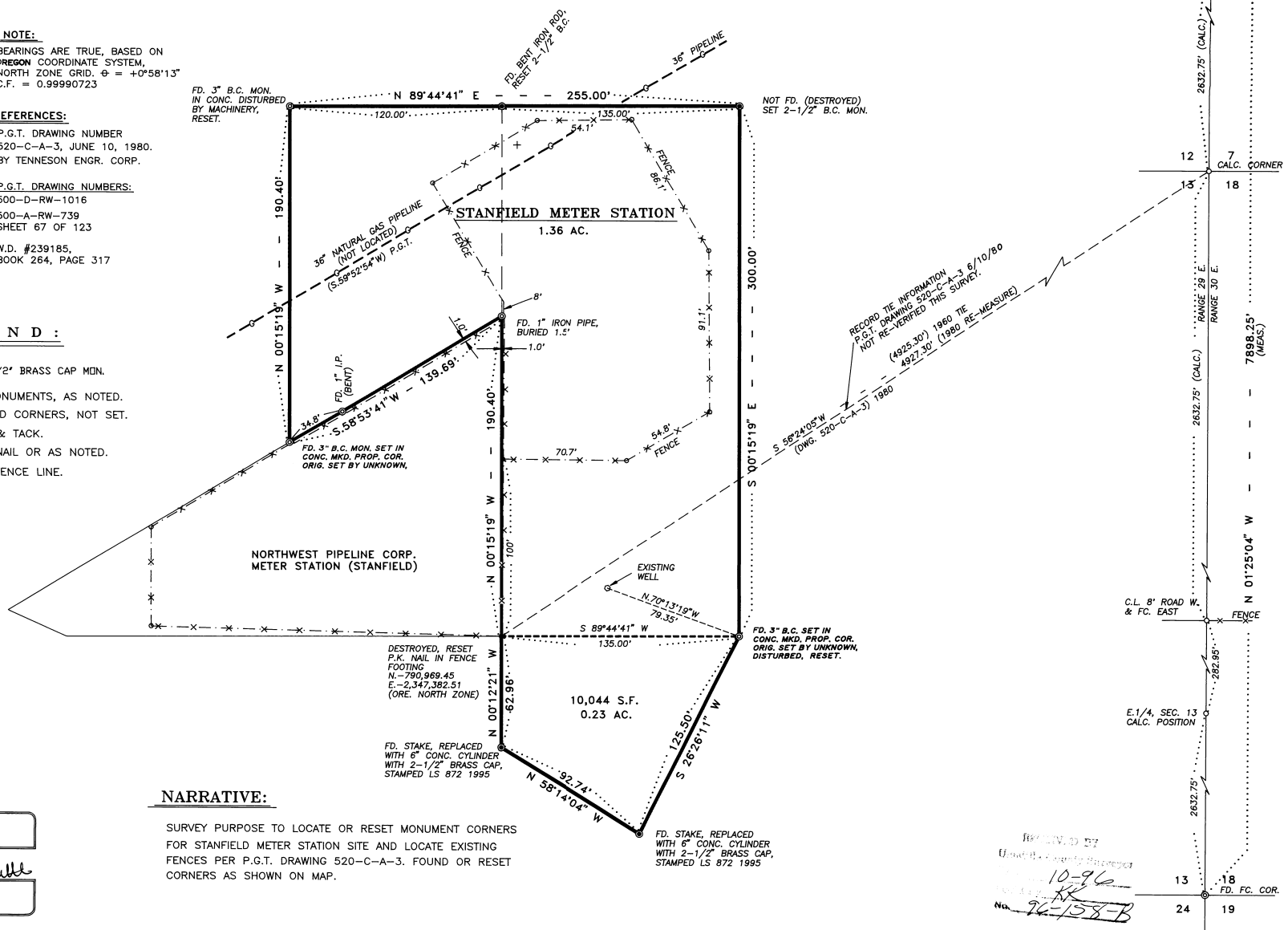
**P.G.T. DRAWING NUMBERS:**  
 500-D-RW-1016  
 500-A-RW-739  
 SHEET 67 OF 123  
 W.D. #239185,  
 BOOK 264, PAGE 317

**LEGEND:**

- RESET 2-1/2" BRASS CAP MON.
- ⊙ FOUND MONUMENTS, AS NOTED.
- CALCULATED CORNERS, NOT SET.
- ◻ SET HUB & TACK.
- ◼ SET P.K. NAIL OR AS NOTED.
- x- EXISTING FENCE LINE.

FD. 3" B.C. MON. IN CONC. DISTURBED BY MACHINERY, RESET.

NOT FD. (DESTROYED) SET 2-1/2" B.C. MON.



**NARRATIVE:**

SURVEY PURPOSE TO LOCATE OR RESET MONUMENT CORNERS FOR STANFIELD METER STATION SITE AND LOCATE EXISTING FENCES PER P.G.T. DRAWING 520-C-A-3. FOUND OR RESET CORNERS AS SHOWN ON MAP.

REGISTERED PROFESSIONAL LAND SURVEYOR  
*David L. Tuttle*  
 OREGON  
 DAVID L. TUTTLE  
 JUL 13, 1988  
 872

REVISION BY  
 10-96  
 96-758-B

SURVEY AND MAP BY

**MINORITY TECH SERVICES**  
 Drafting - Engineering - Planning - Surveying

**MTS**  
 409 LINCOLN STREET  
 THE DALLES, OREGON 97058  
 Ph. 541-296-9177  
 Fax 541-296-6657

| NO.                             | DATE    | DESCRIPTION   | W.O. | DR.    | CH. | APPROVALS |
|---------------------------------|---------|---|------|--------|-----|-----------|
| 2                               | 9-12-86 | ADD SECTION CORNER TIES AND COUNTY FILE MYLAR           | 8523 | S.D.H. |     |           |
| 1                               | 7-20-85 | ADD 0.23 AC. AREA AND SET MONUMENTS.                    | 8523 | S.D.H. |     |           |
| 0                               | 5-17-85 | SURVEY & MAP BY MINORITY TECH SERVICES, THE DALLES, OR. | 8523 | S.D.H. |     |           |
| RECORD OF APPROVALS AND CHANGES |         |   |      |        |     |           |

SURVEY OF  
**STANFIELD METER STATION**  
 IN O-UM-122 (MADISON RANCHES, INC.)  
 IN THE W.1/2, SECTION 13, TWP.4N., RANGE 29E. W.M.  
 UMATILLA COUNTY, OREGON  
 PACIFIC GAS TRANSMISSION COMPANY  
 SAN FRANCISCO, CALIFORNIA

SCALE: 1" = 40'

|                     |        |
|---------------------|--------|
| BILL OF MATERIAL    | CHANGE |
| SUPERSEDES          |        |
| SHEET 1 OF 1 SHEETS |        |
| DRAWING NUMBER      | CHANGE |