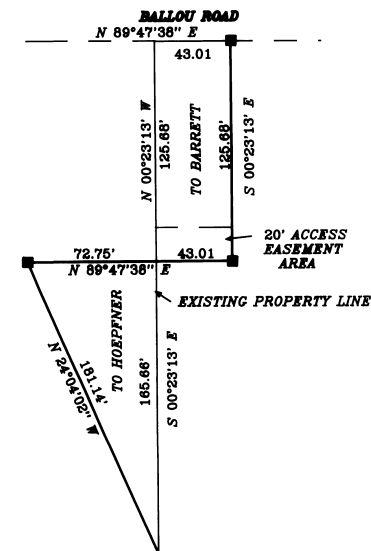


NARRATIVE

PURPOSE OF THIS SURVEY WAS TO SHOW THE NEW PROPERTY LINES REQUESTED BY HOEPFNER AND BARRETT TO BETTER DEFINE THE ACTUAL PROPERTY USED BY EACH. THE NEW LINE IN THE EAST WEST DIRECTION IS HALFWAY BETWEEN A GARAGE ON THE NORTH AND A SHED ON THE SOUTH. THE GARAGE IS BEING SHARED BY EACH PARTY AND AN EASEMENT AGREEMENT WILL BE WRITTEN AFFECTING THE SOUTH 20 FEET OF THE LAND CONVEYED TO BARRETT TO ALLOW ACCESS BY HOEPFNER TO THE GARAGE.

THE BOUNDARIES OF THE NORTHEAST QUARTER WERE ESTABLISHED BY THIS FIRM, C.S. NO. 86-41B AND C.S. NO. 86-117B. THE MONUMENTS WERE FOUND AS NOTED AND WERE IN THE SAME CONDITION AS IN 1985 AND 86 WITH THE EXCEPTION OF THE TWO MONUMENTS ON THE FREEWATER SECONDARY HIGHWAY THAT WERE REPLACED BY ODOT DURING A RECONSTRUCTION OF THE HIGHWAY IN 1995.

BEARINGS ARE BASED ON THE EAST LINE OF SECTION 23 BEARING N 0°08'53" E AS CALLED FOR IN A SURVEY FOR DEMOTTS AND STROUT REALTY C.S. NO. K-15A.



LEGEND

- INDICATES SET 5/8" X 30" IRON REBAR W/ ALUM CAP STAMPED PLS 933
- INDICATES FOUND MONUMENT AS NOTED

| | | | | | |
|--|--|---|----------------------------------|---|------------------------------|
| KRUMBEIN ENGINEERING LTD. ENGINEERS - SURVEYORS - PLANNERS 361 S.E. Second Parallel, Oregon | | Scale 1" = 200' Date 7-19-97 | Dwn. By H-P Ckd. By DHK | Dwg. No. 9704C Job No. 9714 | Revision 1 Revision 2 |
| PROPERTY LINE ADJUST. HOEPFNER - BARRETT SW 1/4, NE 1/4, SEC. 23 T. 6 N., R. 35 E. W. M. | | REGISTERED PROFESSIONAL LAND SURVEYOR <i>David H. Krumbain</i> OREGON JULY 17, 1970 DAVID H. KRUMBEIN 933 | | RECEIVED BY Clatsop County Surveyor Date: 8-9-97 Scale: AS SHOWN 77-150-B | |

REVIEWS 6/30/97