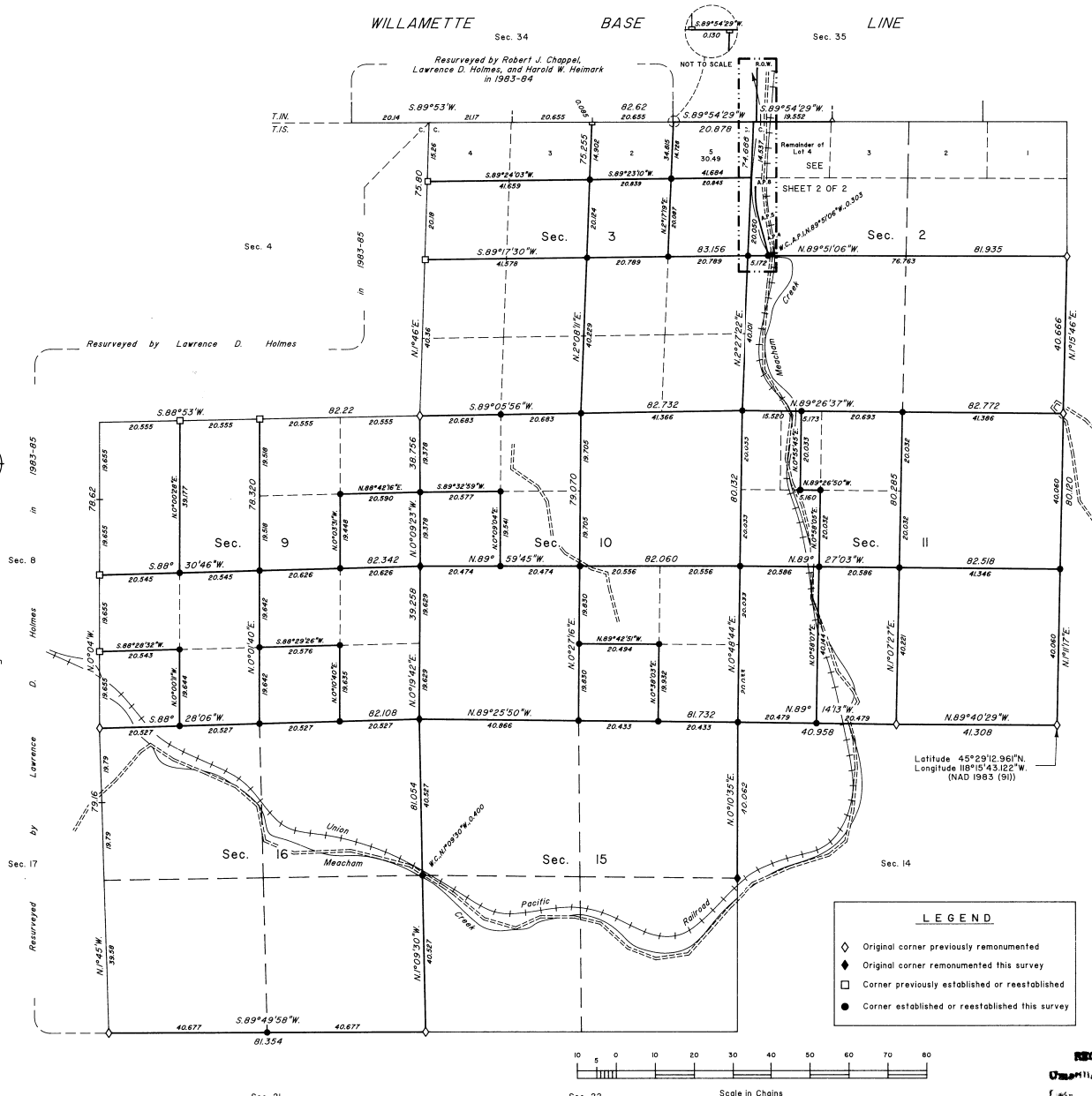


# TOWNSHIP I SOUTH, RANGE 36 EAST, OF THE WILLAMETTE MERIDIAN, OREGON

SHEET 1 OF 2

## CORRECTIVE DEPENDENT RESURVEY AND SURVEY, DEPENDENT RESURVEY, SUBDIVISION OF SECTIONS 2, 9, 10 AND 11, AND SURVEY



A history of surveys is contained in the field notes.

This plat represents a corrective dependent resurvey of a portion of the subdivision lines, the corrective survey of section 3, the dependent resurvey of a portion of the north boundary (Willamette Base Line) and subdivision lines, T. 1 S., R. 36 E., Willamette Meridian, Oregon, designed to restore the corners in their true original locations according to the best available evidence, the subdivision of sections 2, 9, 10 and 11, and the metes-and-bounds survey of a portion of the westerly right-of-way line of the Union Pacific Railroad in section 2.

Sec. 1 Measured distances and directions have been adjusted by Cadastral Measurement Management (CMM), a computer program that incorporates a least squares adjustment routine. The adjusted bearings and distances are reported to the nearest second and 0.001 chain.

Except as shown herein, the lottings and areas are as shown on the plat approved March 31, 1883.

The survey was executed by Richard S. Kaiser and Robert J. Mayorga, Cadastral Surveyors, beginning September 6, 1995, and completed July 11, 1996, pursuant to Special Instructions dated August 9, 1995, and Supplemental Special Instructions dated May 10, 1996, under Group Number 1784, Oregon.

Timber in this area consists of Douglas fir, ponderosa pine, alder and western larch.

At the request of the U.S. Forest Service, the true area for each quarter-quarter section is reported for all lands under their jurisdiction. Where the true area is within 5% of the record area, the quarter-quarter section will retain its aliquot part designation even though the area changes. The quarter-quarter section will continue to be divided by legal subdivision. Where the record area changes by more than 5% or the quarter-quarter section is badly distorted, it has been assigned a lot number and may be further divided only by supplemental plat.

UNITED STATES DEPARTMENT OF THE INTERIOR  
BUREAU OF LAND MANAGEMENT

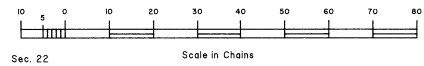
Portland, Oregon June 23, 1998

This plat is strictly conformable to the approved field notes, and the survey, having been correctly executed in accordance with the requirements of law and the regulations of this Bureau, is hereby accepted.

For the Director

*Wayne M. Gardner*  
Chief Cadastral Surveyor of Oregon

RECEIVED BY  
 Date: 9-98  
 File: 98-180-B



Sec. 20

Sec. 21

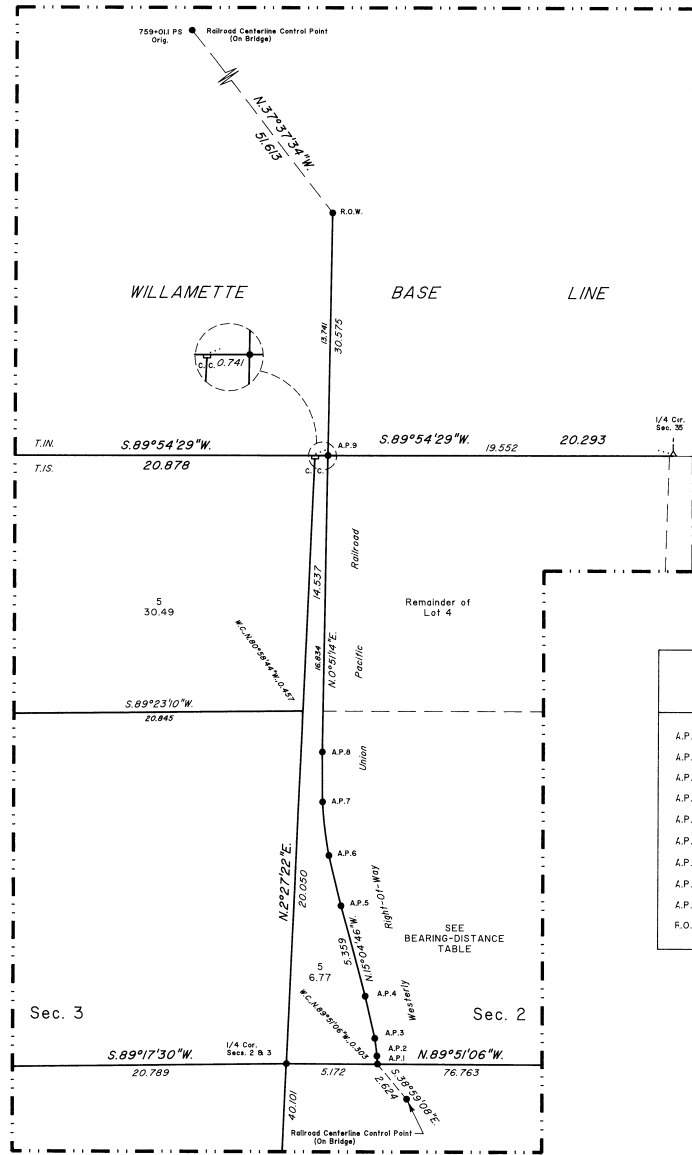
Sec. 22

D.F.B.

TOWNSHIP 1 SOUTH, RANGE 36 EAST, OF THE WILLAMETTE MERIDIAN, OREGON

SHEET 2 OF 2

DEPENDENT RESURVEY AND SURVEY



LEGAL SUBDIVISION	OFFICIAL AREA
SECTION 3	
SE 1/4 NE 1/4	4172 Acres
SW 1/4 NE 1/4	4180 Acres
NE 1/4 SE 1/4	4160 Acres
SE 1/4 SE 1/4	4149 Acres
SW 1/4 SE 1/4	4136 Acres
NW 1/4 SE 1/4	4157 Acres
NE 1/4 SW 1/4	4175 Acres
SE 1/4 SW 1/4	4164 Acres
SW 1/4 SW 1/4	4173 Acres
NW 1/4 SW 1/4	4184 Acres
SE 1/4 NW 1/4	4186 Acres
SW 1/4 NW 1/4	4193 Acres

LEGAL SUBDIVISION	OFFICIAL AREA
SECTION 9	
SE 1/4 NE 1/4	40.00 Acres
SW 1/4 SE 1/4	40.34 Acres
NE 1/4 SW 1/4	40.33 Acres
SE 1/4 SW 1/4	40.31 Acres
NW 1/4 SW 1/4	40.36 Acres
NE 1/4 NW 1/4	40.18 Acres
SE 1/4 NW 1/4	40.17 Acres

LEGAL SUBDIVISION	OFFICIAL AREA
SECTION 10	
NE 1/4 NE 1/4	4119 Acres
SE 1/4 NE 1/4	4107 Acres
SW 1/4 NE 1/4	40.73 Acres
NW 1/4 NE 1/4	40.85 Acres
NE 1/4 SE 1/4	4101 Acres
SE 1/4 SE 1/4	40.89 Acres
NW 1/4 SE 1/4	40.80 Acres
NE 1/4 NW 1/4	40.48 Acres
SE 1/4 NW 1/4	40.28 Acres
NW 1/4 NW 1/4	40.14 Acres

LEGAL SUBDIVISION	OFFICIAL AREA
SECTION 11	
SW 1/4 SW 1/4	4112 Acres
NW 1/4 SW 1/4	41.23 Acres
SW 1/4 NW 1/4	41.29 Acres
W 1/2 NW 1/4 NW 1/4 B	31.05 Acres
W 1/2 E 1/2 NW 1/4 NW 1/4	

BEARING AND DISTANCE TABLE		
Meters-and-Bounds Survey Westerly R/W Union Pacific Railroad		
A.P.1	Radius = 7062.2'	$\Delta = 0^{\circ}15'10''$ Chord = N 4°27'11"W 0.472
A.P.2	Radius = 78118'	$\Delta = 4^{\circ}55'43''$ Chord = N 7°00'34"W 1.018
A.P.3	Spiral Segment	Chord = N 13°16'15"W 2.415
A.P.4		N 15°04'46"W 5.359
A.P.5	Spiral Segment	Chord = N 13°43'38"W 2.917
A.P.6	Radius = 1432.13'	$\Delta = 7^{\circ}57'10''$ Chord = N 7°06'46"W 3.011
A.P.7	Spiral Segment	Chord = N 0°29'54"W 2.917
A.P.8		N 0°51'14"E 16.834
A.P.9		N 0°51'14"E 13.741
F.O.W.		

LEGEND	
◇	Original corner previously remonumented
◆	Original corner remonumented this survey
□	Corner previously established or reestablished
●	Corner established or reestablished this survey

UNITED STATES DEPARTMENT OF THE INTERIOR  
BUREAU OF LAND MANAGEMENT

Portland, Oregon June 23, 1998

This plat is strictly conformable to the approved field notes, and the survey, having been correctly executed in accordance with the requirements of law and the regulations of this Bureau, is hereby accepted.

For the Director  
*Wayne T. Gardner*  
Chief Cadastral Surveyor of Oregon



9-98  
98-180-B