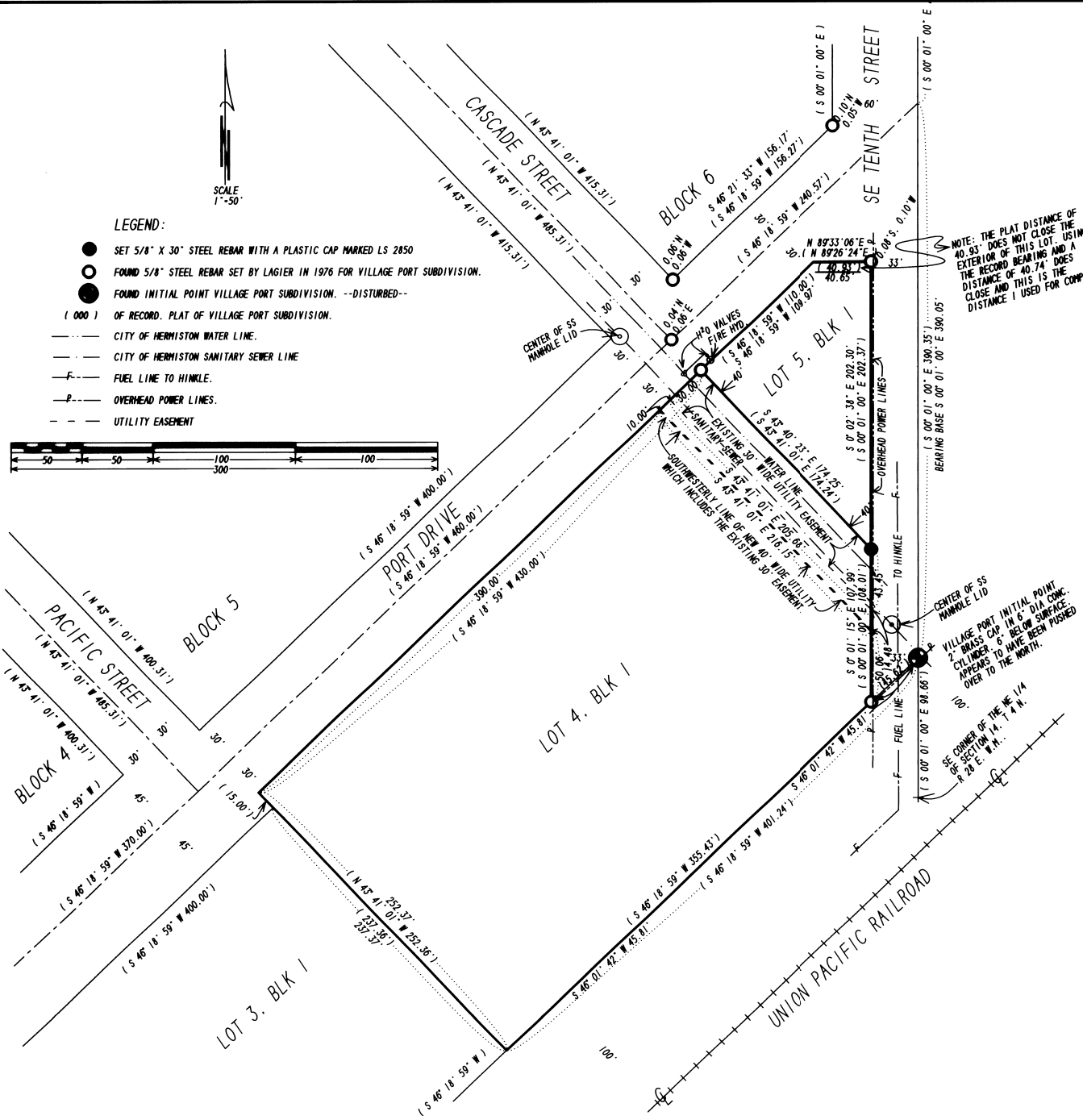
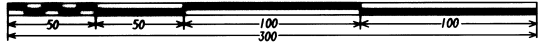




LEGEND:

- SET 5/8" X 30" STEEL REBAR WITH A PLASTIC CAP MARKED LS 2850
- FOUND 5/8" STEEL REBAR SET BY LAGIER IN 1976 FOR VILLAGE PORT SUBDIVISION.
- FOUND INITIAL POINT VILLAGE PORT SUBDIVISION. --DISTURBED--
- (000) OF RECORD. PLAT OF VILLAGE PORT SUBDIVISION.
- CITY OF HERMISTON WATER LINE.
- CITY OF HERMISTON SANITARY SEWER LINE
- FUEL LINE TO HINKLE.
- OVERHEAD POWER LINES.
- - - UTILITY EASEMENT



NEW UTILITY EASEMENT DESCRIPTION:

BEGINNING AT THE NORTHERLY CORNER OF LOT 4, BLOCK 1, VILLAGE PORT SUBDIVISION AS LOCATED IN SECTION 14, T 4 N, R 28 E, W.M., CITY OF HERMISTON, UMATILLA COUNTY, OREGON:

THENCE S 43° 41' 01" E ALONG THE COMMON BOUNDARY OF LOTS 4 AND 5, BLOCK 1 OF SAID VILLAGE PORT SUBDIVISION A DISTANCE OF 174.24 FEET TO THE SOUTHERLY CORNER OF SAID LOT 5;

THENCE S 00° 01' 00" E ALONG THE WESTERLY LINE OF SAID LOT 4 A DISTANCE OF 57.93 FEET;

THENCE N 43° 41' 01" W PARALLEL TO THE SAID COMMON BOUNDARY OF LOTS 4 AND 5 A DISTANCE OF 216.15 FEET TO THE NORTHWESTERLY LINE OF SAID LOT 4;

THENCE N 46° 18' 59" E ALONG THE SAID NORTHWESTERLY LINE OF LOT 4 A DISTANCE OF 40.00 FEET TO THE POINT OF BEGINNING OF THIS UTILITY EASEMENT DESCRIPTION.

THIS DESCRIPTION INCLUDES ALL OF THE EXISTING 30 FOOT WIDE UTILITY EASEMENT SHOWN ACROSS LOT 4, BLOCK 1, VILLAGE PORT SUBDIVISION PLAT.

NOTE: THE PLAT DISTANCE OF 40.93' DOES NOT CLOSE THE EXTENSION OF THIS LOT. USING THE RECORD BEARING AND A DISTANCE OF 40.74' DOES CLOSE AND THIS IS THE DISTANCE I USED FOR COMPS.

NARRATIVE:

THE PURPOSE OF THIS SURVEY IS TO LOCATE THE COMMON BOUNDARY BETWEEN LOTS 4 AND 5, BLOCK 1 VILLAGE PORT SUBDIVISION AS LOCATED IN SECTION 14, T 4 N, R 28 E, W.M., CITY OF HERMISTON, COUNTY OF UMATILLA, STATE OF OREGON, AND THEN CONFIRM THAT THE CITY WATER AND SEWER LINES ACROSS THE EASTERLY SIDE OF LOT 4 WERE WITHIN THE 30 FOOT UTILITY EASEMENT AS SHOWN ON THE PLAT OF VILLAGE PORT SUBDIVISION.

A LATER REQUEST FROM THE CITY TO SHOW AND WRITE A NEW 40 FOOT WIDE UTILITY EASEMENT DESCRIPTION AND TO INCLUDE IT ON THIS RECORD OF SURVEY PLAT WAS COMPLIED WITH.

I FOUND THE MONUMENTS SHOWN AND USED THE PLAT RECORD TO TRACE AND SET THE CORNER SHOWN AT THE SOUTH CORNER OF LOT 5, BLOCK 1.

REGISTERED PROFESSIONAL LAND SURVEYOR

Judson L. Coppock

OREGON
JANUARY 26, 1988
JUDSON L. COPPOCK
3880

EXPIRES DATE: DEC. 31, 2000

RECEIVED BY
Umatilla County Surveyors
Date: 8-97
Paid by: RK
No. 97-137-B

SURVEY FOR: THE CITY OF HERMISTON
LOTS 4 AND 5, BLOCK 1, VILLAGE PORT SUBDIVISION
A COMMERCIAL-INDUSTRIAL PLANNED UNIT DEVELOPMENT
AS LOCATED IN SECTION 14, T 4 N, R 28 E,
W.M., UMATILLA COUNTY, OREGON

COPPOCK SURVEYING 541-567-6974
PO BOX 340 1210 SW 11TH, # 29 HERMISTON, OR, 97639
FAX 567-3081

12 JULY 1999