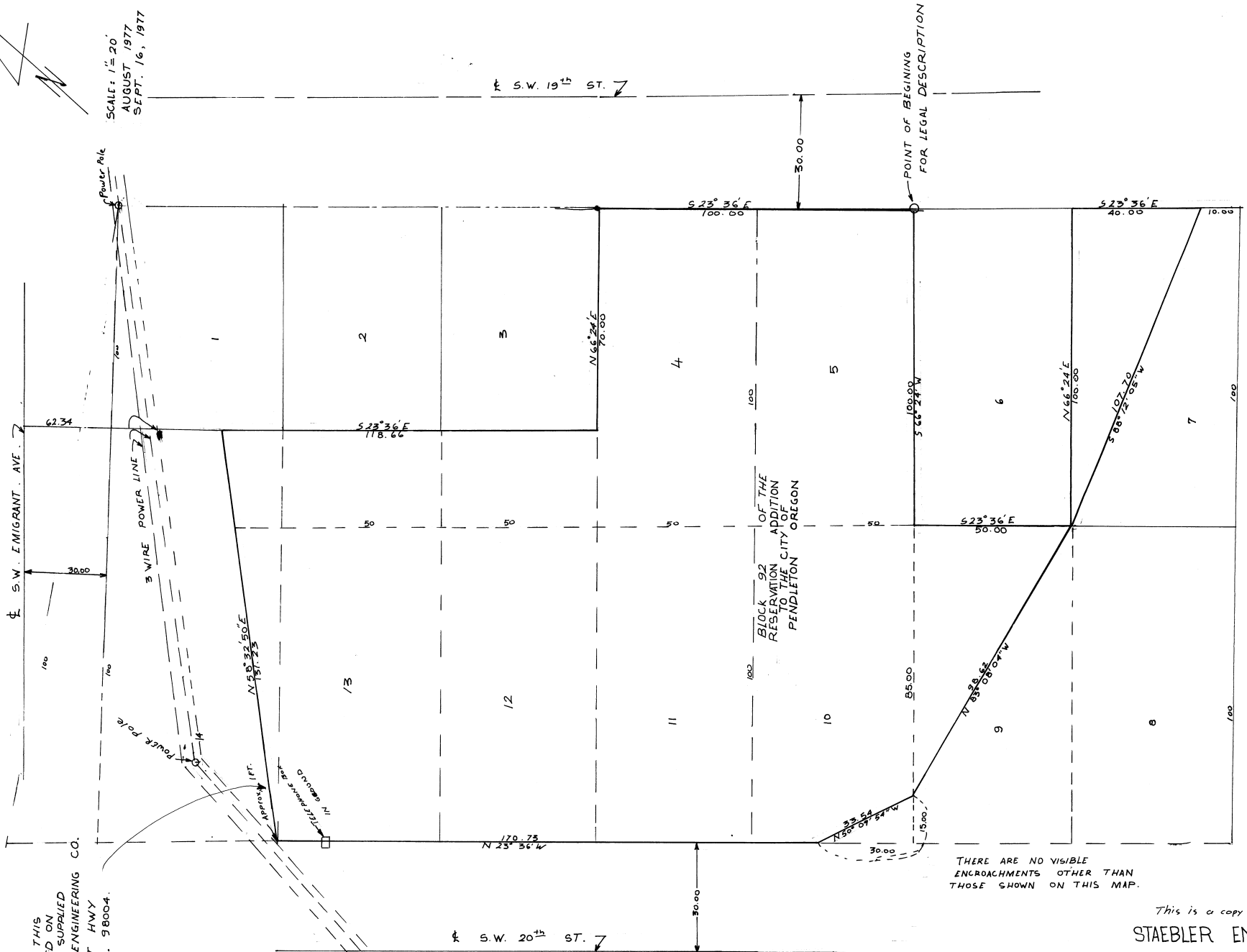


LOCATION OF THIS
LINE IS BASED ON
FORMATION SUPPLIED
BY PETTIJOHN ENGINEERING CO.
15150 SUNSET HWY
BELLEVUE, WA. 98004.

SCALE: 1" = 20'
AUGUST 1977
SEPT. 16, 1977



THERE ARE NO VISIBLE
ENCROACHMENTS OTHER THAN
THOSE SHOWN ON THIS MAP.

This is a copy traced (TT).
STAEBLER ENGINEERING
DONALD L. STAEBLER, P.E.
1532 S.W. 41st ST.
PENDLETON, OREGON 97801.
2N 32 10C B
99 - 230 - B