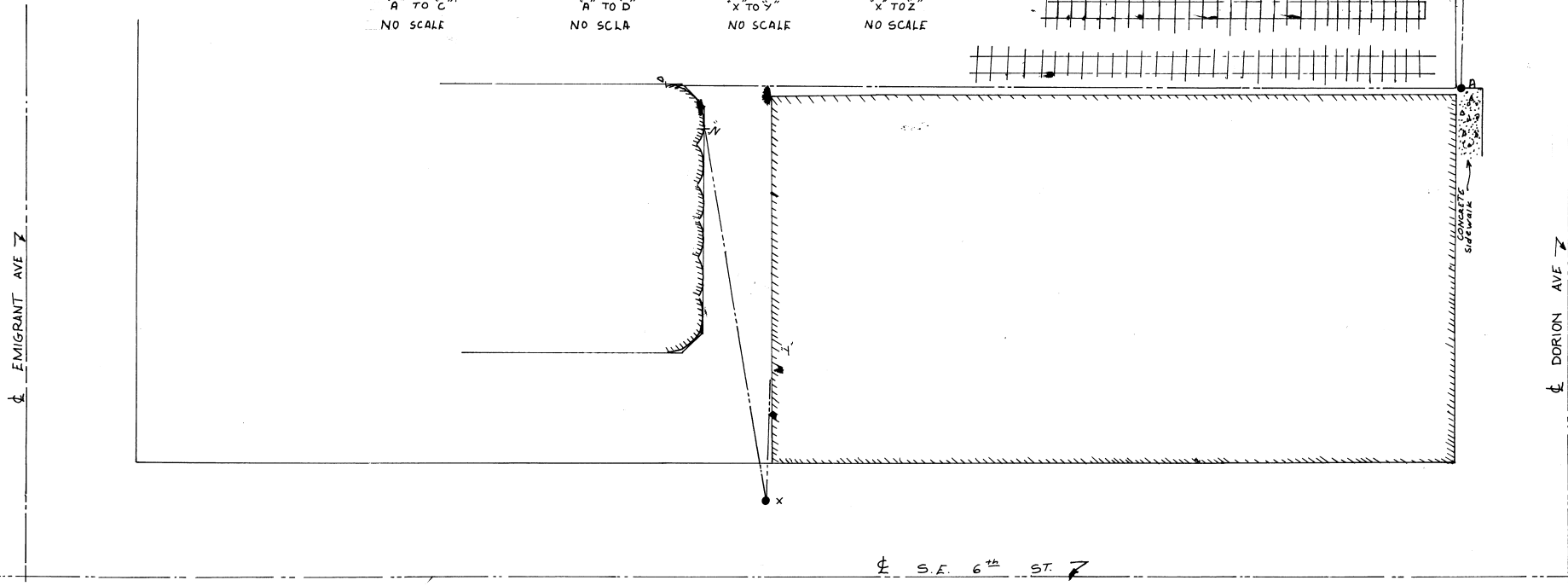
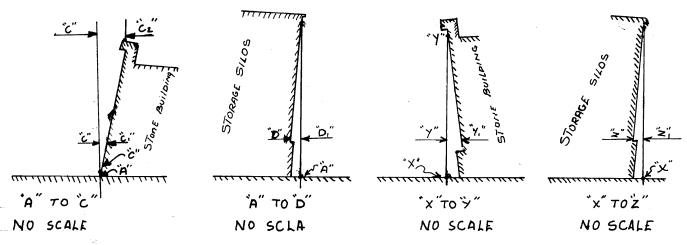


TABULATION OF MEASUREMENTS.

| DATE | E TO C | E TO D | B TO D | Y TO Z | Z TO X |
|---------|--------|--------|--------|--------|--------|
| 1-14-64 | 0.265 | 0.210 | 0.215 | 0.72 | 0.553 |
| 1-3-66 | 0.265 | 0.210 | 0.215 | 0.72 | 0.553 |
| | | | | | |
| | | | | | |
| | | | | | |
| | | | | | |



DESCRIPTION OF POINTS :

- A. Square pin, center punched. Located 18 1/2" northerly & 24" westerly of the N.W. corner of the foundation, also located 18 1/2" N. & 3 3/4" W. of the S.W. corner of the concrete sidewalk driven flush in asphalt walk.
- B. Galvanized post for street sign for S.W. 2nd. Located on N. side of intersection.
- C. Three points, one on concrete cap at top of wall identified by mark in concrete and painted; Point of rock in wall 5" above sidewalk and painted; pointed of rock in wall approximately 12" above sidewalk and painted; all points approximately 36" west of N.E. corner of building.
- D. Paint mark on wall above foundation.
- X. Square pin, center punched, located 10'E. & 19"S of S.E. corner of the building & 4"E. of the face of the curb.
- Y. Two points protruding rock in wall approximate 12" below cap marked with paint; and top of S. edge of foundation marked with point located 34" W. of the S.E. corner of the building.
- Z. Paint mark on wall above foundation.

PROCEDURE FOR OFF PLUMB DETERMINATION:

- I. Instrument at point "A"
 - a) Sighting directly on point of bottom rock at point "C"
 - 1. Reading on Rock 5" above sidewalk is 0.255
 - 2. Reading on Cap point is 0.250
 - b) Sighting directly on point of tangency of top elevator below cap and directly above point "D"
 - 1. Reading on point mark at "D" is 0.225
- II. Instrument at point "X"
 - a) Sighting directly at upper protruding rock at point "Y"
 - 1. Plumb line is 0.25 S. of top of foundation wall.
 - b) Sighting directly on point of tangency of top of elevator below cap and directly above point "Z"
 - 1. Reading on point mark at "Z" is 0.553

This is a traced copy.
(TT) 10-99.
99-231-B

| | |
|--|----------------|
| SURVEY FOR IGLEHEART BROTHERS FLOUR MILL | |
| SCALE : 1"=20' | DATE : 1-14-64 |
| STANLEY G. WALLULIS CONSULTING ENGINEER P.O. BOX 91 PENDLETON, OREGON | |