

SEC. 2 & 3, T. 4 N., R. 28 E., W.M.
SEC. 34, T. 5 N., R. 28 E., W.M.

NARRATIVE

THE PURPOSE OF THIS SURVEY IS TO ESTABLISH HORIZONTAL CONTROL FOR THE INSTALLATION OF A TRAFFIC SIGNAL AND ACQUISITION OF RIGHT OF WAY AT THE INTERSECTION OF STATE HIGHWAY 54 AND COUNTY ROAD 612. RIGHT OF WAY AT STATE HIGHWAY 54 WAS DETERMINED FROM THE STATE R/W MAP 9B-17-8 DRG. NO. 15-37, ENGLISH UNITS WERE CONVERTED TO METRIC WITH A CONVERSION FACTOR OF .30480061. COUNTY ROAD 612 CENTER LINE ALIGNMENT WAS RE-ESTABLISHED FROM FD. BRASS DISK (10-16-87) N. E. COR. SEC. 3, T. 4 N., R. 28 E., W.M. AND FD. BRASS DISK (1980) N 1/2 SEC 3, T. 4 N., R. 28 E., W.M.

THE SURVEY IS LOCATED IN SECTIONS 2 AND 3, T. 4 N., R. 28 E., W.M. AND SECTION 34, T. 5 N., R. 28 E., W.M. UMATILLA COUNTY, OREGON.

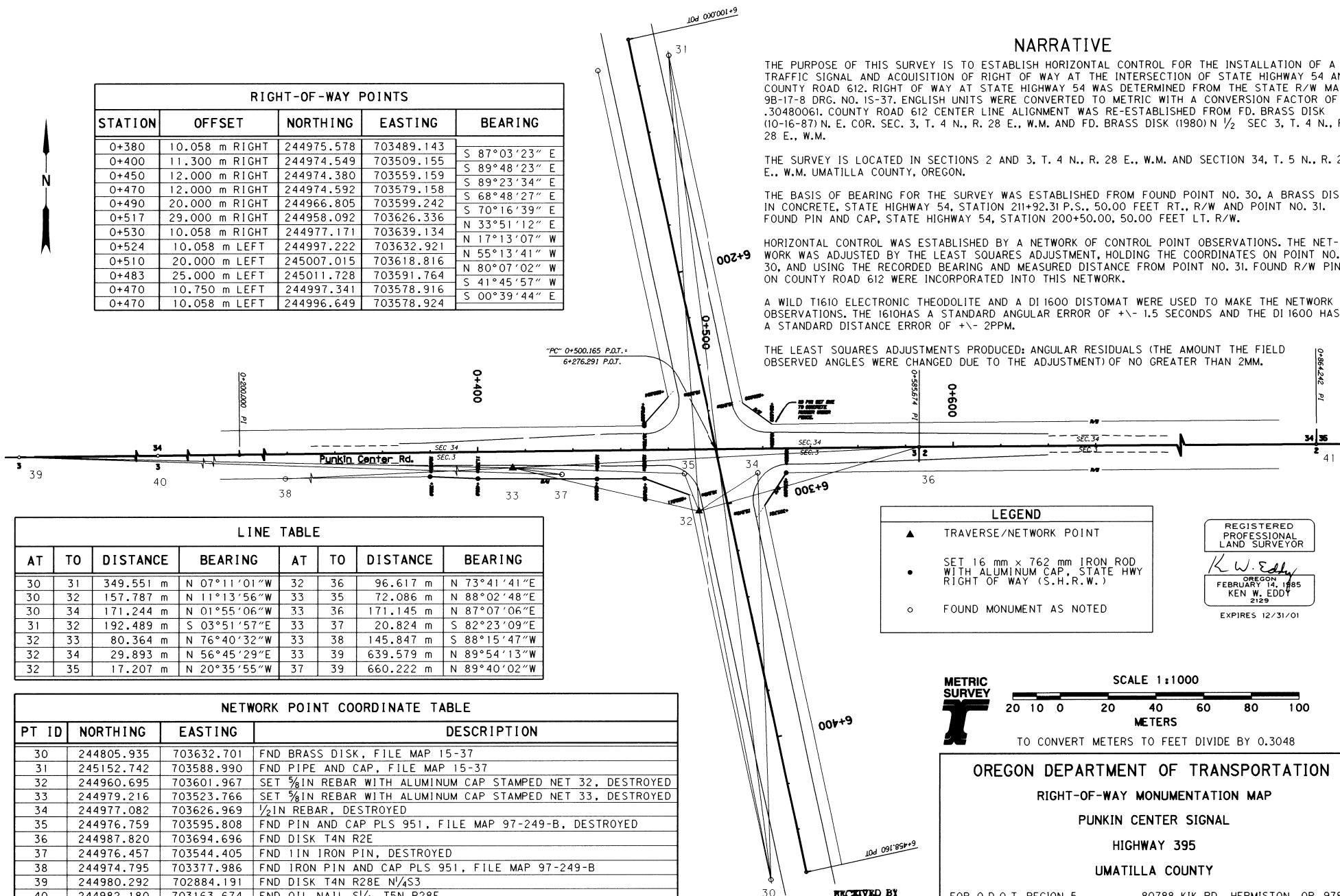
THE BASIS OF BEARING FOR THE SURVEY WAS ESTABLISHED FROM FOUND POINT NO. 30, A BRASS DISC IN CONCRETE, STATE HIGHWAY 54, STATION 211+92.31 P.S., 50.00 FEET RT., R/W AND POINT NO. 31, FOUND PIN AND CAP, STATE HIGHWAY 54, STATION 200+50.00, 50.00 FEET LT. R/W.

HORIZONTAL CONTROL WAS ESTABLISHED BY A NETWORK OF CONTROL POINT OBSERVATIONS, THE NETWORK WAS ADJUSTED BY THE LEAST SQUARES ADJUSTMENT, HOLDING THE COORDINATES ON POINT NO. 30, AND USING THE RECORDED BEARING AND MEASURED DISTANCE FROM POINT NO. 31, FOUND R/W PINS ON COUNTY ROAD 612 WERE INCORPORATED INTO THIS NETWORK.

A WILD T1610 ELECTRONIC THEODOLITE AND A DI 1600 DISTOMAT WERE USED TO MAKE THE NETWORK OBSERVATIONS, THE 1610 HAS A STANDARD ANGULAR ERROR OF +/- 1.5 SECONDS AND THE DI 1600 HAS A STANDARD DISTANCE ERROR OF +/- 2PPM.

THE LEAST SQUARES ADJUSTMENTS PRODUCED: ANGULAR RESIDUALS (THE AMOUNT THE FIELD OBSERVED ANGLES WERE CHANGED DUE TO THE ADJUSTMENT) OF NO GREATER THAN 2MM.

RIGHT-OF-WAY POINTS				
STATION	OFFSET	NORTHING	EASTING	BEARING
0+380	10.058 m RIGHT	244975.578	703489.143	S 87°03'23" E
0+400	11.300 m RIGHT	244974.549	703509.155	S 89°48'23" E
0+450	12.000 m RIGHT	244974.380	703559.159	S 89°23'34" E
0+470	12.000 m RIGHT	244974.592	703579.158	S 68°48'27" E
0+490	20.000 m RIGHT	244966.805	703599.242	S 70°16'39" E
0+517	29.000 m RIGHT	244958.092	703626.336	N 33°51'12" E
0+530	10.058 m RIGHT	244977.171	703639.134	N 17°13'07" W
0+524	10.058 m LEFT	244997.222	703632.921	N 55°13'41" W
0+510	20.000 m LEFT	245007.015	703618.816	N 80°07'02" W
0+483	25.000 m LEFT	245011.728	703591.764	S 41°45'57" W
0+470	10.750 m LEFT	244997.341	703578.916	S 00°39'44" E
0+470	10.058 m LEFT	244996.649	703578.924	



LINE TABLE							
AT	TO	DISTANCE	BEARING	AT	TO	DISTANCE	BEARING
30	31	349.551 m	N 07°11'01"W	32	36	96.617 m	N 73°41'41"E
30	32	157.787 m	N 11°13'56"W	33	35	72.086 m	N 88°02'48"E
30	34	171.244 m	N 01°55'06"W	33	36	171.145 m	N 87°07'06"E
31	32	192.489 m	S 03°51'57"E	33	37	20.824 m	S 82°23'09"E
32	33	80.364 m	N 76°40'32"W	33	38	145.847 m	S 88°15'47"W
32	34	29.893 m	N 56°45'29"E	33	39	639.579 m	N 89°54'13"W
32	35	17.207 m	N 20°35'55"W	37	39	660.222 m	N 89°40'02"W

NETWORK POINT COORDINATE TABLE			
PT ID	NORTHING	EASTING	DESCRIPTION
30	244805.935	703632.701	FND BRASS DISK, FILE MAP 15-37
31	245152.742	703588.990	FND PIPE AND CAP, FILE MAP 15-37
32	244960.695	703601.967	SET 5/8 IN REBAR WITH ALUMINUM CAP STAMPED NET 32, DESTROYED
33	244979.216	703523.766	SET 5/8 IN REBAR WITH ALUMINUM CAP STAMPED NET 33, DESTROYED
34	244977.082	703626.969	1/2 IN REBAR, DESTROYED
35	244976.759	703595.808	FND PIN AND CAP PLS 951, FILE MAP 97-249-B, DESTROYED
36	244987.820	703694.696	FND DISK T4N R2E
37	244976.457	703544.405	FND 1 IN IRON PIN, DESTROYED
38	244974.795	703377.986	FND IRON PIN AND CAP PLS 951, FILE MAP 97-249-B
39	244980.292	702884.191	FND DISK T4N R28E N 1/4 S3
40	244982.180	703163.674	FND OIL NAIL S 1/4 T5N R28E
41	244989.323	703973.260	FND 3 IN BRASS DISK T5N R28E, T4N R28E

LEGEND

- ▲ TRAVERSE/NETWORK POINT
- SET 16 mm x 762 mm IRON ROD WITH ALUMINUM CAP, STATE HWY RIGHT OF WAY (S.H.R.W.)
- FOUND MONUMENT AS NOTED

REGISTERED PROFESSIONAL LAND SURVEYOR
K.W. Eddy
OREGON
FEBRUARY 14, 1985
KEN W. EDDY
2129
EXPIRES 12/31/01

METRIC SURVEY

SCALE 1:1000

20 10 0 20 40 60 80 100 METERS

TO CONVERT METERS TO FEET DIVIDE BY 0.3048

OREGON DEPARTMENT OF TRANSPORTATION
RIGHT-OF-WAY MONUMENTATION MAP
PUNKIN CENTER SIGNAL
HIGHWAY 395
UMATILLA COUNTY

RECEIVED BY
Umatilla County Surveyor
Date 5-26
8-2-2000
01-71-B

FOR O.D.O.T. REGION 5 80788 KIK RD., HERMISTON .OR. 97838
MARCH 9, 2000 SHEET 1 OF 1