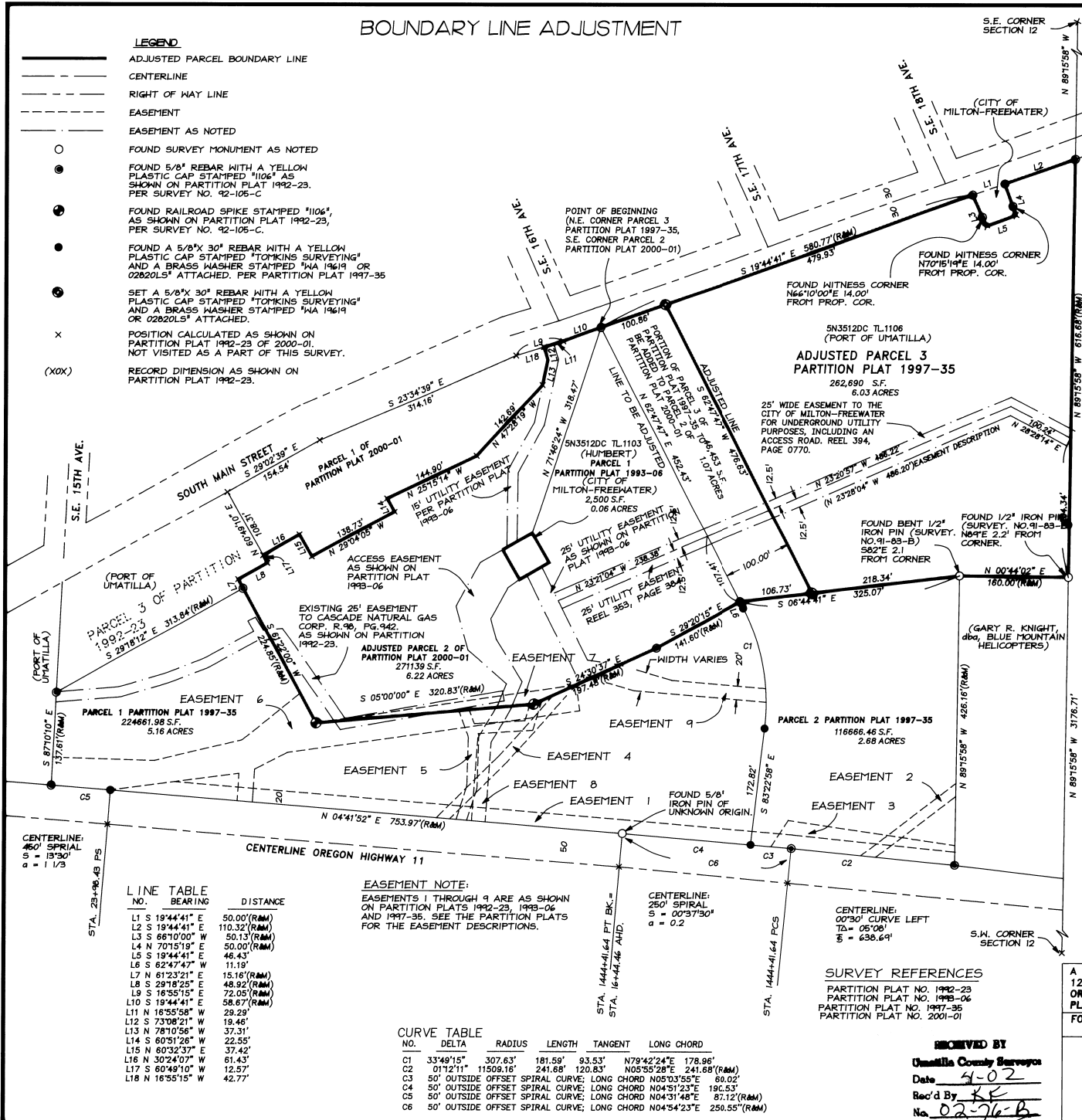


BOUNDARY LINE ADJUSTMENT

LEGEND

- ADJUSTED PARCEL BOUNDARY LINE
- - - - CENTERLINE
- - - - RIGHT OF WAY LINE
- - - - EASEMENT
- - - - EASEMENT AS NOTED
- FOUND SURVEY MONUMENT AS NOTED
- FOUND 5/8" REBAR WITH A YELLOW PLASTIC CAP STAMPED "1106" AS SHOWN ON PARTITION PLAT 1992-23, PER SURVEY NO. 92-105-C
- FOUND RAILROAD SPIKE STAMPED "1106", AS SHOWN ON PARTITION PLAT 1992-23, PER SURVEY NO. 92-105-C
- FOUND A 5/8"x 30" REBAR WITH A YELLOW PLASTIC CAP STAMPED "TOMKINS SURVEYING" AND A BRASS WASHER STAMPED "MA 19619 OR 02820LS" ATTACHED, PER PARTITION PLAT 1997-35
- SET A 5/8"x 30" REBAR WITH A YELLOW PLASTIC CAP STAMPED "TOMKINS SURVEYING" AND A BRASS WASHER STAMPED "MA 19619 OR 02820LS" ATTACHED.
- x POSITION CALCULATED AS SHOWN ON PARTITION PLAT 1992-23 OF 2000-01, NOT VISITED AS A PART OF THIS SURVEY.
- (XOX) RECORD DIMENSION AS SHOWN ON PARTITION PLAT 1992-23.



LINE TABLE

NO.	BEARING	DISTANCE
L1	S 19°44'41" E	50.00'(R/M)
L2	S 19°44'41" E	110.32'(R/M)
L3	S 66°10'00" W	50.13'(R/M)
L4	N 70°15'19" E	50.00'(R/M)
L5	S 19°44'41" E	46.43'
L6	S 62°47'47" W	11.19'
L7	N 61°23'21" E	15.16'(R/M)
L8	S 29°18'25" E	48.92'(R/M)
L9	S 16°55'15" E	72.05'(R/M)
L10	S 19°44'41" E	58.67'(R/M)
L11	S 16°55'58" W	29.29'
L12	S 73°08'21" W	19.46'
L13	N 78°10'56" W	37.31'
L14	S 60°51'26" W	22.55'
L15	N 60°32'37" E	37.42'
L16	N 30°24'07" W	61.43'
L17	S 60°49'10" W	12.57'
L18	N 16°55'15" E	42.77'

EASEMENT NOTE:
EASEMENTS 1 THROUGH 9 ARE AS SHOWN ON PARTITION PLATS 1992-23, 1993-06 AND 1997-35. SEE THE PARTITION PLATS FOR THE EASEMENT DESCRIPTIONS.

CURVE TABLE

NO.	DELTA	RADIUS	LENGTH	TANGENT	LONG CHORD
C1	33°49'15"	307.63'	181.89'	93.53'	N79°42'24"E 178.98'
C2	01°12'11"	11509.16'	241.66'	120.83'	N05°55'28"E 241.66'(R/M)
C3	50'	OUTSIDE OFFSET SPIRAL CURVE; LONG CHORD N05°03'55"E	60.02'		
C4	50'	OUTSIDE OFFSET SPIRAL CURVE; LONG CHORD N04°51'23"E	196.53'		
C5	50'	OUTSIDE OFFSET SPIRAL CURVE; LONG CHORD N04°51'48"E	87.12'(R/M)		
C6	50'	OUTSIDE OFFSET SPIRAL CURVE; LONG CHORD N04°54'23"E	250.55'(R/M)		

SURVEY REFERENCES
PARTITION PLAT NO. 1992-23
PARTITION PLAT NO. 1993-06
PARTITION PLAT NO. 1997-35
PARTITION PLAT NO. 2001-01

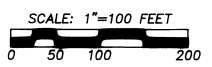
REMOVED BY
Umatilla County Surveyors
Date: 4-02
Rec'd By: KE
No. 02-76-B

BASIS OF BEARINGS
N04°41.52'E ALONG THE EASTERLY RIGHT-OF-WAY OF OREGON STATE HIGHWAY NO. 11 BETWEEN ENGINEERS STATIONS 16+44.46 AND 23+98.49, AS SHOWN ON PARTITION PLATS NO. 1992-23 AND 1993-06.

APPROVALS
THIS BOUNDARY LINE ADJUSTMENT IS HEREBY APPROVED.
Mina Hartman
CITY OF MILTON-FREEWATER, PLANNING DIRECTOR 3/19/02
DATE

LEGAL DESCRIPTION
PARCEL TO BE EXCEPTED FROM PARCEL 3 OF PARTITION PLAT 1997-35 AND ADDED TO PARCEL 2 OF PARTITION PLAT 2000-01:
THE NORTH 100.00 FEET OF PARCEL 3 OF PARTITION PLAT 1997-35, BEING MORE PARTICULARLY DESCRIBED AS FOLLOWS:
BEGINNING AT THE NORTHEAST CORNER PARCEL 3 OF PARTITION PLAT 1997-35 SAID POINT ALSO BEING THE SOUTHEAST CORNER OF PARCEL 2 OF PARTITION PLAT 2000-01; THENCE ALONG THE EAST LINE OF PARCEL 3 OF PARTITION PLAT 1997-35 ALONG THE WEST LINE OF SOUTH MAIN STREET S19°44'41"E A DISTANCE OF 100.36 FEET TO A POINT IN A LINE DRAWN PARALLEL TO AND 100.00 FEET SOUTH, WHEN MEASURED AT RIGHT ANGLES, FROM THE NORTH LINE OF PARCEL 3 OF PARTITION PLAT 1997-35 AND THE SOUTH LINE OF PARCEL 2 OF PARTITION PLAT 2000-01; THENCE S62°47'47"W ALONG SAID PARALLEL LINE A DISTANCE OF 476.63 FEET TO A POINT ON THE WEST LINE OF PARCEL 3 OF PARTITION PLAT 1997-35; THENCE N06°44'41"W ALONG SAID WEST LINE A DISTANCE OF 106.73 FEET TO THE NORTHWEST CORNER THEREOF; THENCE N62°47'47"E ALONG THE NORTH LINE OF PARCEL 3 OF PARTITION PLAT 1997-35 AND THE SOUTH LINE OF PARCEL 2 OF PARTITION PLAT 2000-01 A DISTANCE OF 452.43 FEET TO THE POINT OF BEGINNING.
SUBJECT TO EASEMENTS AND SERVITUDES OF RECORD.
CONTAINING 1.07 ACRES MORE OR LESS.

NARRATIVE
THIS SURVEY WAS PERFORMED AT THE REQUEST OF THE PORT OF UMATILLA TO ADJUST THE NORTH LINE OF PARCEL 3 OF PARTITION PLAT 1997-35 SOUTH 100 FEET, INCREASING THE SIZE OF PARCEL 2 OF PARTITION PLAT 2000-01.
THE FIELD WORK WAS PERFORMED WITH A TOPCON DUAL FREQUENCY RTK GPS SYSTEM HAVING STANDARD ERRORS OF 1 CM + 2 PPM TIMES BASELINE LENGTH, UNLESS OTHERWISE NOTED ALL MONUMENT SHOWN WERE VISITED IN THE FALL OF 2001 OR THE WINTER OF 2002.
THE EAST LINE OF PARCEL 2 OF PARTITION PLAT 2000-01 WAS NOT SURVEYED AT THIS TIME. THE LOCATION WAS COMPUTED PER SAID PARTITION PLAT.



REGISTERED PROFESSIONAL LAND SURVEYOR
Greg E. Flowers
OREGON
JUNE 30, 1997
GREG E. FLOWERS
02820LS
RENEWS 12/31/2003
3/12/02

A BOUNDARY LINE ADJUSTMENT LOCATED IN THE S.E. 1/4 OF SECTION 12, TWP.5 NORTH, RGE.35 EAST, W.M., UMATILLA COUNTY, OREGON, BEING A PORTION OF PARCEL 3 OF PARTITION PLAT 1997-35 AND PARCEL 2 OF PARTITION PLAT 1992-23 FOR: THE PORT OF UMATILLA, 505 WILLAMETTE AVENUE, UMATILLA, OREGON 97062

TOMKINS LAND SURVEYING INC.
20 EAST POPLAR ST. SUITE 204
WALLA WALLA, WA. 99362
(509) 522-4843 MFRVBLA.DWG
DATE: JANUARY 2002
SCALE: 1"=100'