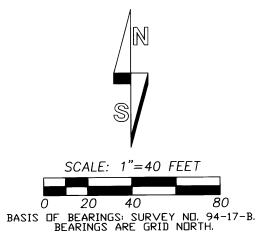


# RECORD OF SURVEY



### LEGEND

- - SET 5/8"x30" IRON REBAR WITH 1 1/4" YELLOW PLASTIC CAP MARKED 'DR PLS 1106 WA PLS 17372.'
- ⊙ - MONUMENT FOUND AS NOTED.
- - FOUND 5/8" REBAR FROM SURVEY NO. 94-17-B.
- (XX) - RECORD FROM SURVEY NO. 94-17-B, A REPLAT OF A PORTION OF BLOCK 15, RAILROAD ADDITION, RECORDED AT BOOK 13, PAGE 32, RECORD OF TOWN PLATS.
- (XXX)R1 - RECORD FROM SURVEY NO. 88-81-B.
- ⊙ - NOTE PERTAINING TO EXISTING MONUMENT FOUND, SEE "MONUMENT NOTES".
- - INDICATES FENCE LINE.

LINE NO.	BEARING	DISTANCE	RECORD DIMENSION
L1	N 00°47'02" W	50.43'	
L2	N 00°47'02" W	50.43'	(S 00°40'01" W 50.39')R1
L3	S 81°45'24" W	40.34'	
L4	S 00°47'02" E	50.43'	
L5	S 00°47'02" E	50.43'	(S 00°40'01" W 50.39')R1
L6	N 81°45'24" E	40.34'	

### MONUMENT NOTES:

- ⊙ A - FOUND 1" IRON BAR SET IN CONCRETE, PER SURVEY NO. 97-17-B, MONUMENT BEARS S 44°E, 0.29' FROM CALCULATED POSITION. MONUMENT SET ON SURVEY NO. M-82-AX.
- ⊙ B - FOUND 1" IRON BAR SET IN CONCRETE, PER SURVEY NO. 97-17-B, MONUMENT BEARS N 11°E, 0.27' FROM CALCULATED POSITION. MONUMENT SET ON SURVEY NO. M-82-AX.
- ⊙ C - FOUND 5/8" REBAR FROM SURVEY NO. 88-81-B, PER SURVEY NO. 97-17-B, MONUMENT BEARS N 81°E, 0.93' FROM CALCULATED POSITION.
- ⊙ D - FOUND 5/8" REBAR FROM SURVEY NO. 88-81-B, PER SURVEY NO. 97-17-B, MONUMENT BEARS N 81°E, 1.23' FROM CALCULATED POSITION. SET NEW 5/8" REBAR MONUMENT, SEE LEGEND.
- ⊙ E - FOUND 5/8" REBAR FROM SURVEY NO. 88-81-B, BEARS N 81°41' E, 1.27' FROM CALCULATED POSITION.
- ⊙ F - FOUND 5/8" REBAR WITH 1 1/2" ALUM. CAP FROM SURVEY NO. 88-81-B, BEARS N 81°03' E, 1.55' FROM CALCULATED POSITION.
- ⊙ G - FOUND 5/8" REBAR WITH 1 1/2" ALUM. CAP FROM SURVEY NO. 88-81-B, BEARS N 84°36' E, 1.48' FROM CALCULATED POSITION. SET NEW 5/8" REBAR MONUMENT, SEE LEGEND.

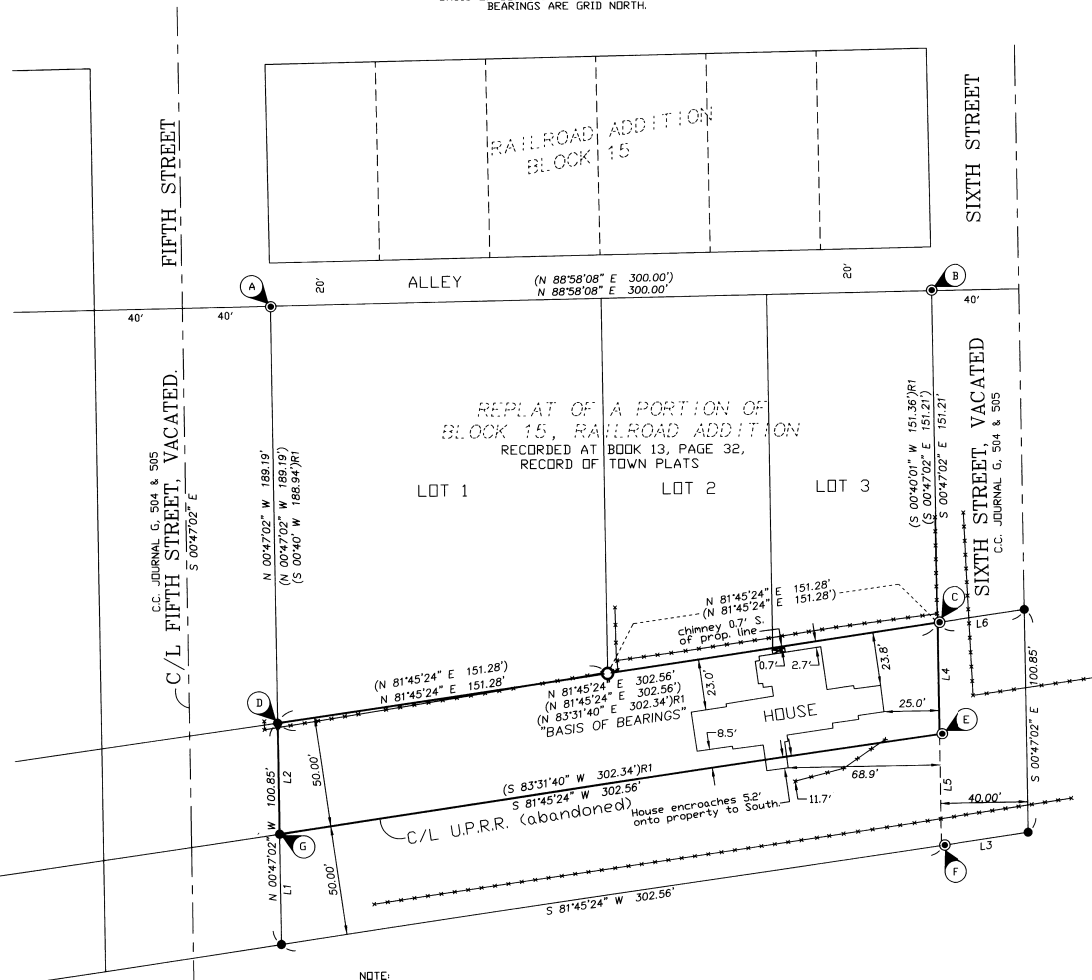
### NARRATIVE:

THIS SURVEY WAS MADE AT THE REQUEST OF COLDWELL BANKER, PENDLETON OREGON, ACTING ON BEHALF OF FAIRBANKS CAPITAL CORPORATION, THE PURPOSE OF THE SURVEY WAS TO DETERMINE THE BOUNDARY OF TAX LOT 7201, MAP 4N3519BA. THE RECORD DOCUMENT USED TO DETERMINE THE BOUNDARY IS TRUSTEE'S DEED RECORDED AT REEL 426, PAGE 0177, DEED RECORDS. THE BOUNDARY OF TAX LOT 7200 WAS ALSO MONUMENTED, AS SHOWN.

THE SURVEY WAS MADE WITH REFERENCE TO MONUMENTS DENOTED ON THE REPLAT OF A PORTION OF BLOCK 15 OF RAILROAD ADDITION RECORDED AT BOOK 13, PAGE 32, RECORD OF TOWN PLATS. MEASUREMENTS ON THIS PLAT MATCH THE ANGULAR RELATIONSHIPS BETWEEN THE NORTH-SOUTH AND EAST-WEST STREETS REPORTED ON MOST RECENT SURVEYS NORTH OF MAIN STREET IN ATHENA. SURVEY NO. 88-81-B REPORTED AN EXACT 90 DEGREE ANGLE BETWEEN THE NORTH-SOUTH AND EAST-WEST STREETS. THIS RESULTS IN THE VARIATION BETWEEN MONUMENTS SET ON SURVEY NO. 88-81-B AND THOSE OF THIS SURVEY AND SURVEY NO. 94-17-B.

THIS SURVEY WAS MADE WITH A 2 PERSON CREW USING A SOKKIA SET 4B FIVE RECEIVED BY SECOND TOTAL STATION BY A COMBINATION OF CLOSED TRAVERSES AND RADIAL TIES. CORNER MONUMENTS WERE ESTABLISHED BY RADIAL METHODS AND VERIFIED BY SEPARATE OBSERVATIONS.

Umatilla County Surveyor  
 Date: 8-03  
 Rec'd by: KR  
 No. 03-200-13



NOTE:  
 RECORD DOCUMENT USED FOR SURVEY OF PARCEL AT 717 NORTH FIFTH STREET IS TRUSTEE'S DEED RECORDED AS INSTRUMENT NO. 2002-4260177, AT REEL 426, PAGE 0177, DEED RECORDS.

REGISTERED PROFESSIONAL LAND SURVEYOR

*William R. Wells*  
 OREGON  
 JULY 22, 1977  
 WILLIAM R. WELLS  
 1106  
 RENEWS 6/30/04

WILLIAM R. WELLS, PLS  
 2602 N.E. RIVERSIDE PLACE  
 P.O. BOX 1696  
 PENDLETON, OR 97801  
 PHONE: (541) 276-6362

DATE: 08/03 DR. BY: JMW  
 CK. BY: vrw NO: 03-890

PROJECT:  
 SURVEY FOR:  
 FAIRBANKS CAPITAL CORPORATION  
 717 N. 5TH STREET  
 ATHENA, OREGON  
 LOCATED IN THE NE1/4 NW1/4  
 OF SECTION 19, T4N., R35E., W.M.,  
 UMATILLA COUNTY, OREGON.