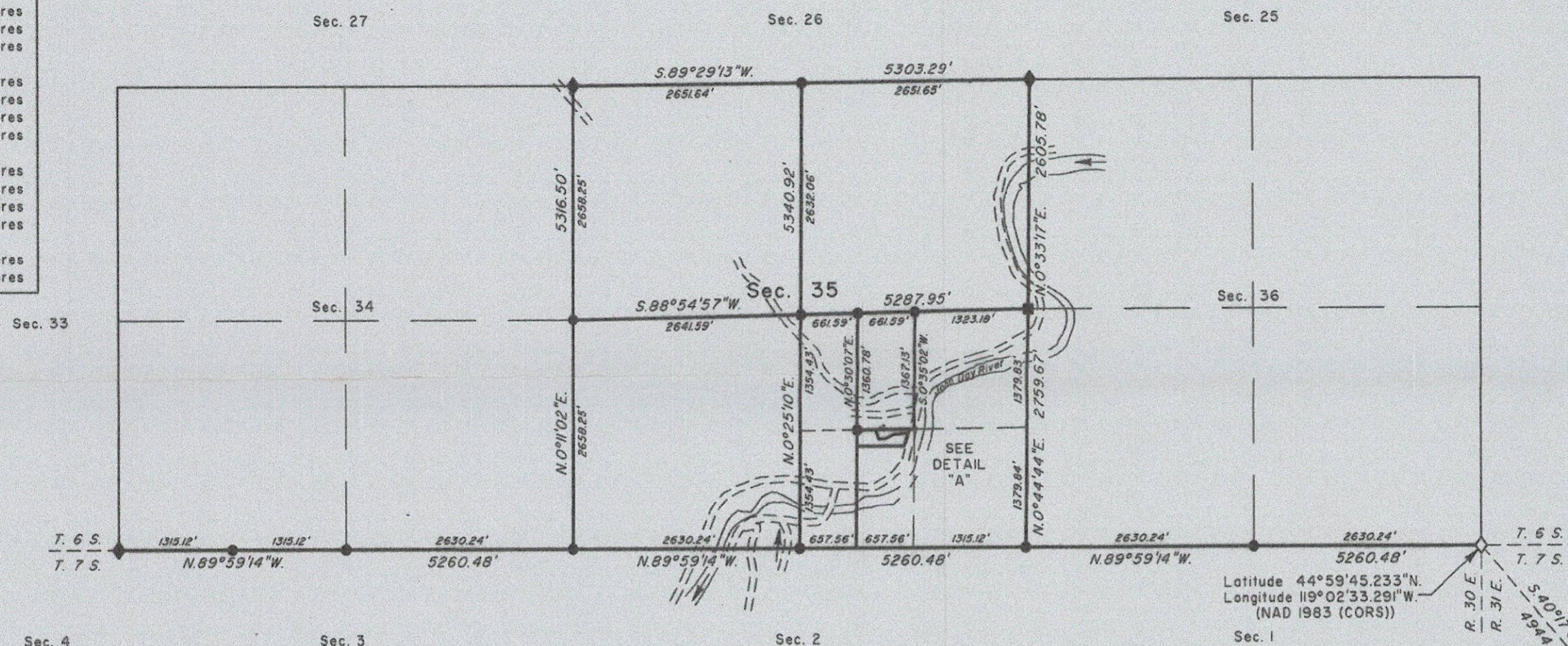


# TOWNSHIP 6 SOUTH, RANGE 30 EAST, OF THE WILLAMETTE MERIDIAN, OREGON

## DEPENDENT RESURVEY, SUBDIVISION OF SECTION , AND METES AND BOUNDS SURVEY

LEGAL SUBDIVISION	OFFICIAL AREA
SECTION 35	
NE 1/4 NE 1/4	39.72 Acres
NW 1/4 NE 1/4	39.92 Acres
SW 1/4 NE 1/4	39.87 Acres
SE 1/4 NE 1/4	39.67 Acres
NE 1/4 NW 1/4	40.10 Acres
NW 1/4 NW 1/4	40.30 Acres
SW 1/4 NW 1/4	40.22 Acres
SE 1/4 NW 1/4	40.02 Acres
NE 1/4 SW 1/4	40.81 Acres
NW 1/4 SW 1/4	40.43 Acres
SW 1/4 SW 1/4	40.35 Acres
SE 1/4 SW 1/4	40.73 Acres
W 1/2 NW 1/4 SE 1/4	20.58 Acres
SE 1/4 SE 1/4	41.51 Acres



A history of surveys is contained in the field notes.

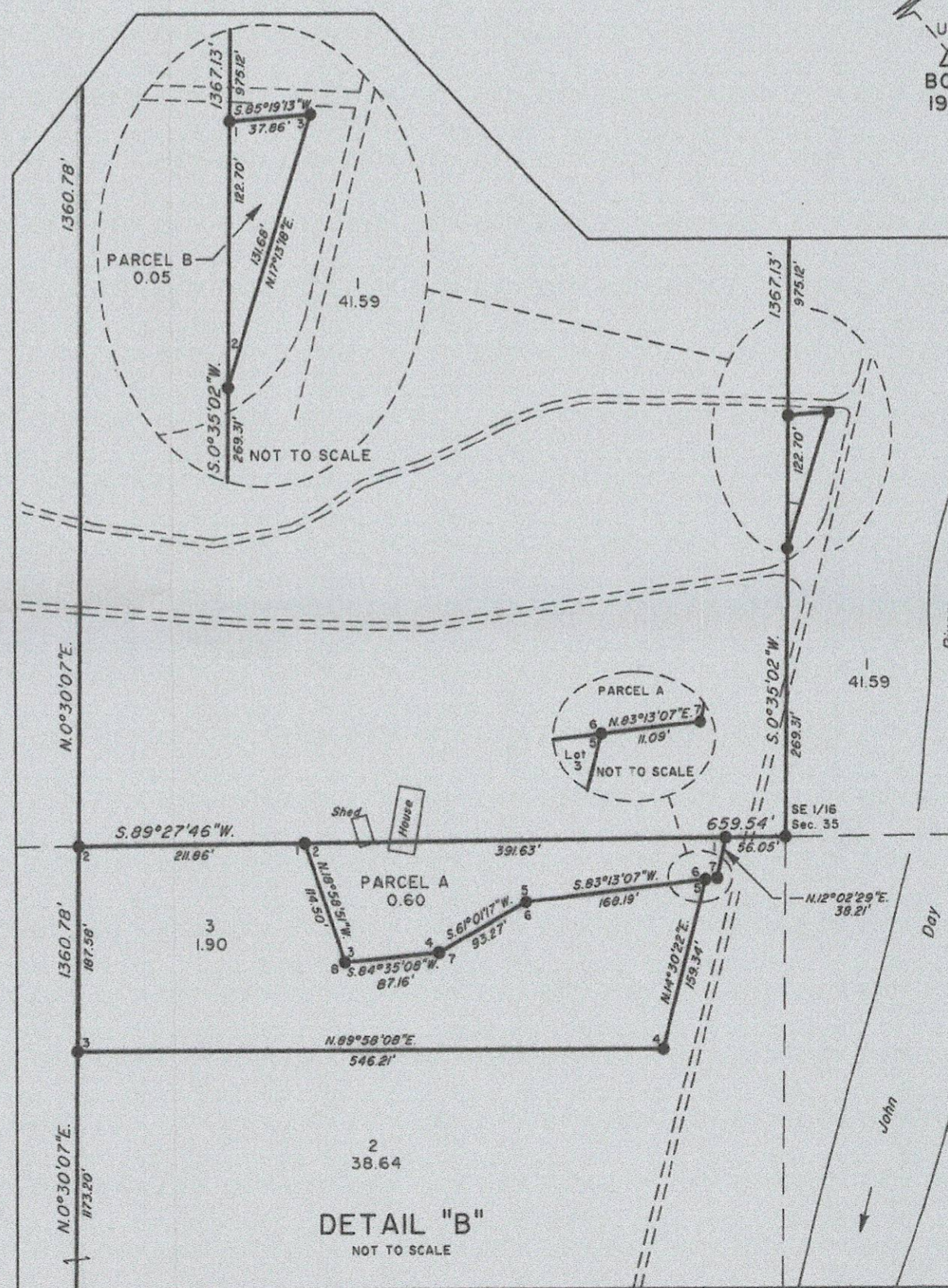
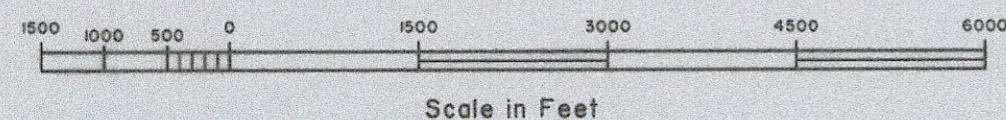
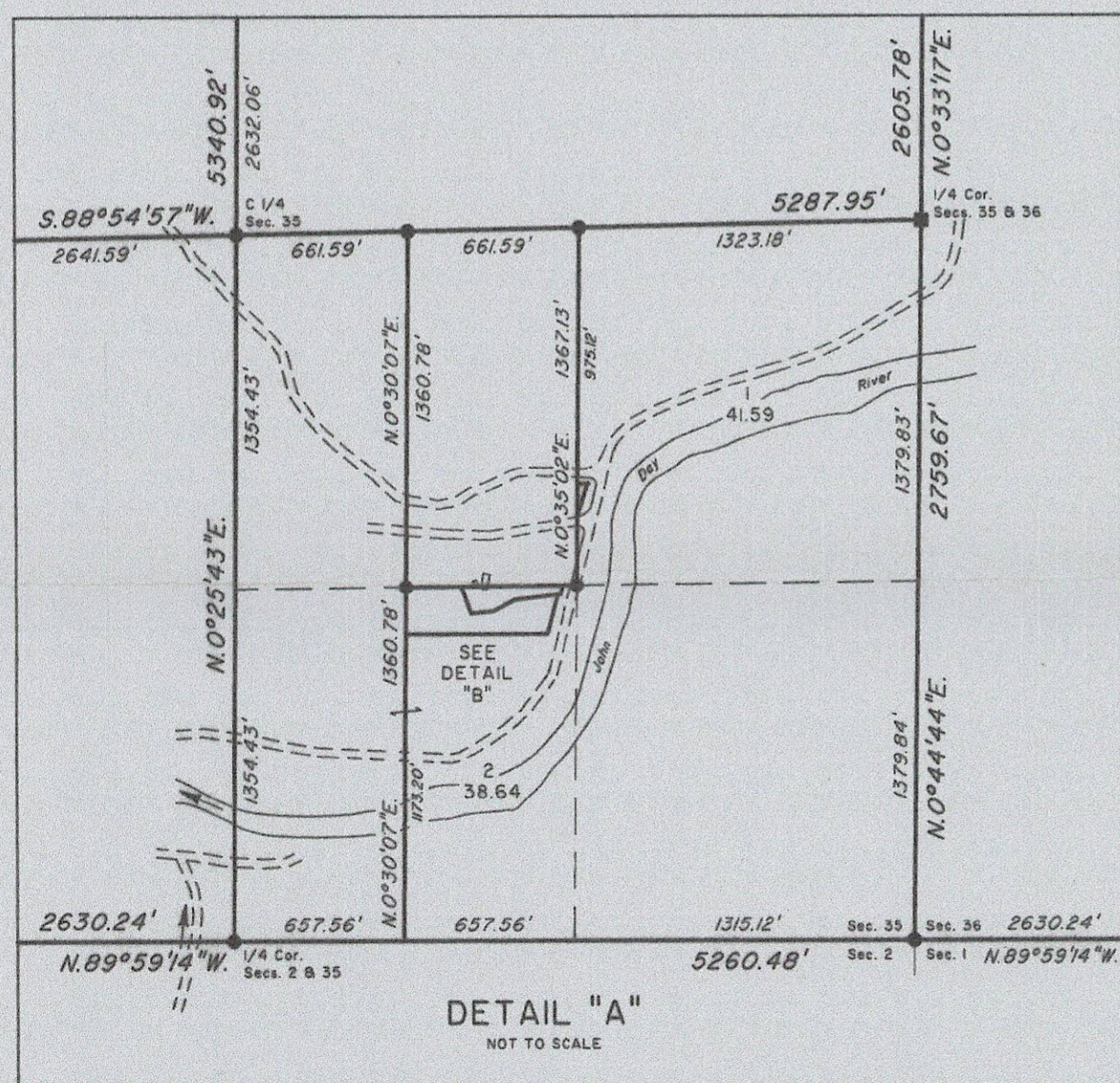
This plat represents a dependent resurvey of a portion of the south boundary and subdivisional lines, T. 6 S., R. 30 E., Willamette Meridian, Oregon, designed to restore the corners in their true original locations according to the best available evidence, the subdivision of section 35, metes-and-bounds survey of lot 3 in section 35, and parcels A and B in section 35.

Actual quantity acreages have been returned in tabular form for the federal interest lands where indicated. The aliquot parts and lots will retain their designation even though the official acreage has changed. The aliquot part of a section will continue to be subdivided by legal subdivision in accordance with the Manual. When an area has been assigned a lot number, it may be further subdivided only by a supplemental plat or another official survey. Where not indicated, the official lottings and areas not affected by this survey are as shown on the plat approved November 23, 1881.

Measured distances and directions have been adjusted by computer software that incorporates a least squares adjustment routine. The adjusted bearings and distances are reported to the nearest second and 0.01 foot.

The tie to the geodetic control station is reported as mean bearing and sea level distance.

The survey was executed by David A. Schlaich, Land Surveyor, U.S. Forest Service, beginning April 13, 2006, and completed February 23, 2007, pursuant to Special Instructions dated June 15, 2005, and Supplemental Special Instructions dated December 7, 2006, under Group Number 2128, Oregon.



### LEGEND

- ◇ Original corner previously remonumented
- ◆ Original corner remonumented this survey
- Corner previously restored; remonumented this survey
- Corner established or reestablished this survey

UNITED STATES DEPARTMENT OF THE INTERIOR  
BUREAU OF LAND MANAGEMENT

Portland, Oregon June 6, 2007

This plat is strictly conformable to the approved field notes, and the survey, having been correctly executed in accordance with the requirements of law and the regulations of this Bureau, is hereby accepted.

For the Director

*John P. Farnsworth, Acting*

Chief Cadastral Surveyor of Oregon

RECEIVED BY  
Umatilla County Surveyor  
Date 1-09  
Rec'd by KK  
No. 09-009-B