

SEC. 11 and 12, T. 4 N., R. 33 E., W.M.

SURVEY NARRATIVE

THE PURPOSE OF THIS SURVEY IS TO ESTABLISH HORIZONTAL CONTROL AND DEFINE THE RIGHT-OF-WAY BOUNDARY ACQUIRED FOR THE CONSTRUCTION OF THE GREASEWOOD CREEK BRIDGE (BRIDGE NO. 20518) LOCATED NEAR MILE POST 1 ON THE HAVANA - HELIX HIGHWAY (OR 335).

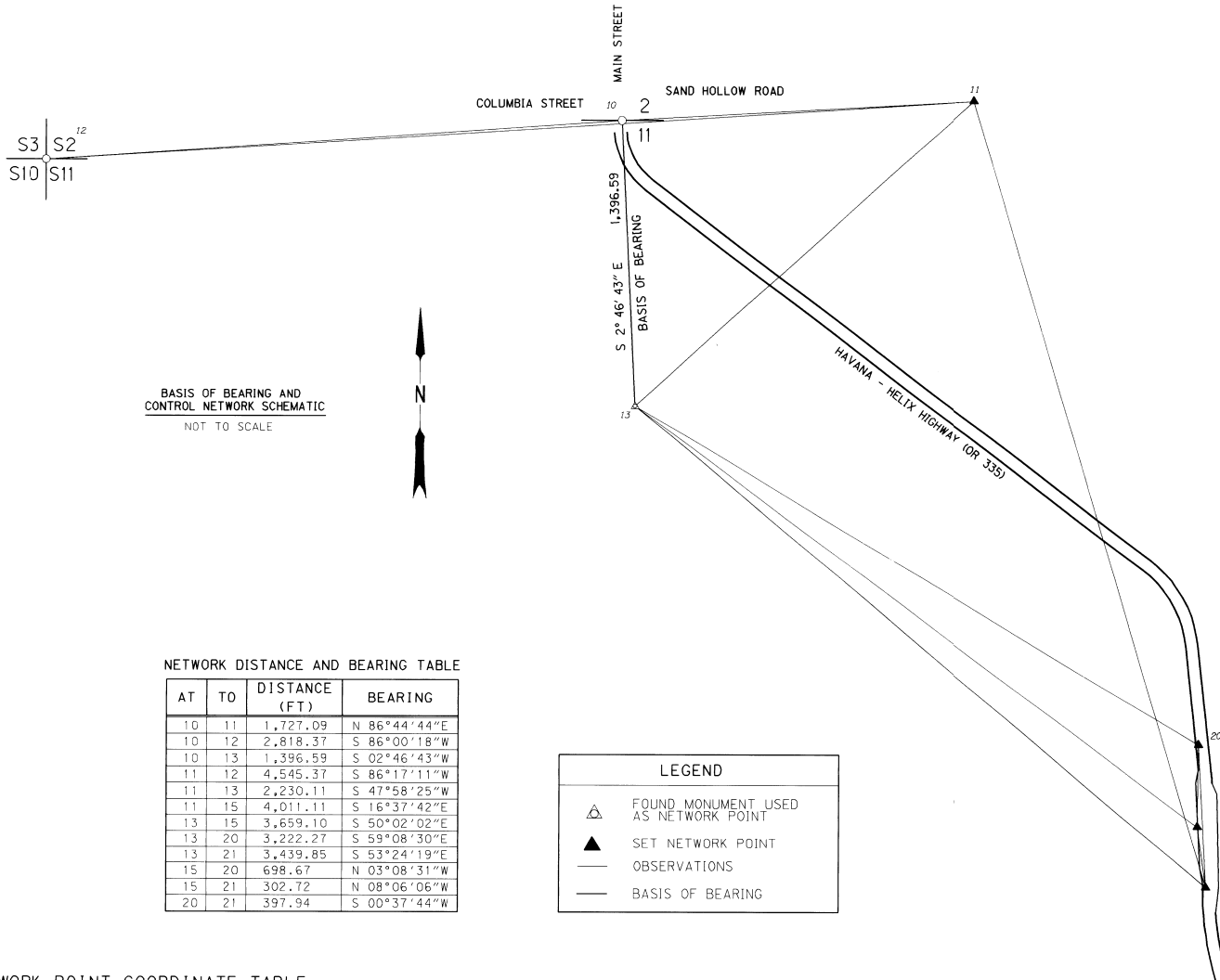
RIGHT-OF-WAY ACQUIRED NECESSARY FOR THIS PROJECT WAS DETERMINED FROM THE HAVANA - HELIX HIGHWAY CONSTRUCTED ALIGNMENT, DATED NOVEMBER 15, 1923, FROM UMATILLA COUNTY ROADMASTERS OFFICE (COUNTY ROAD NO. 843).

BASIS OF BEARING FOR THIS SURVEY ARE FROM POINTS FOUND FROM COUNTY SURVEY NO. 05-60-C, POINTS 10 AND 13 NAD '83, THE BEARING IS S 02°46'43" E - THE ROTATION ANGLE FROM SURVEY IS 03°33'33" CLOCKWISE. THE COORDINATES ARE ASSUMED. THIS SURVEY IS LOCATED IN T4N, R33E, SECTIONS 11 AND 12.

HORIZONTAL CONTROL FOR THIS PROJECT WAS ESTABLISHED AND OBSERVATIONS WERE ADJUSTED BY USING LEAST SQUARES. THE LOCATION WORK WAS DONE FROM SEPTEMBER 13, 2005 TO NOVEMBER 30, 2005.

THE RIGHT-OF-WAY BOUNDARY MONUMENTATION WAS DETERMINED BY STATION OFFSET FROM CENTERLINE. CHANGES IN RIGHT-OF-WAY AND REFERENCES WERE MONUMENTED USING 3/8" X 30" IRON REBAR WITH AN ALUMINIUM CAP AND ALSO, POST AND PLACARD WERE SET WITH HIGHWAY STATIONING AND OFFSET FROM CENTERLINE. THE RIGHT-OF-WAY MONUMENTATION WAS COMPLETED ON OCTOBER 30, 2008.

THE DATA WAS OBTAINED WITH A LEICA TCA 1800 ELECTRONIC TOTAL STATION.



BASIS OF BEARING AND CONTROL NETWORK SCHEMATIC
NOT TO SCALE

NETWORK DISTANCE AND BEARING TABLE

AT	TO	DISTANCE (FT)	BEARING
10	11	1,727.09	N 86°44'44"E
10	12	2,818.37	S 86°00'18"W
10	13	1,396.59	S 02°46'43"W
11	12	4,545.37	S 86°17'11"W
11	13	2,230.11	S 47°58'25"W
11	15	4,011.11	S 16°37'42"E
13	15	3,659.10	S 50°02'02"E
13	20	3,222.27	S 59°08'30"E
13	21	3,439.85	S 53°24'19"E
15	20	698.67	N 03°08'31"W
15	21	302.72	N 08°06'06"W
20	21	397.94	S 00°37'44"W

LEGEND	
△	FOUND MONUMENT USED AS NETWORK POINT
▲	SET NETWORK POINT
—	OBSERVATIONS
—	BASIS OF BEARING

NETWORK POINT COORDINATE TABLE

PT. NO.	LDP NORTHING	LDP EASTING	DATE	DESCRIPTION AND REFERENCE DOCUMENTS
10	801,366.759	8,673,306.584	09-13-05	FND RAILROAD SPIKE AT NORTH 1/4 CORNER SECTION 11 PER COUNTY SURVEY 05-60-C
11	801,464.808	8,675,030.890	09-13-05	SET HUB AND TACK
12	801,170.399	8,670,495.066	09-13-05	FND 2 1/2" BRASS CAP, SECTION CORNER FOR SECTIONS 2, 3, 10, & 11, PER COUNTY SURVEY 05-012-B
13	799,971.810	8,673,374.288	09-13-05	FND 3/8" IRON PIN WITH YELLOW PLASTIC CAP MARKED UCPWD LS2627, PER COUNTY SURVEY 05-60-C
15	797,621.437	8,676,178.709	09-13-05	SET 12" GALVANIZED NAIL
20	798,319.055	8,676,140.414	05-01-07	SET 12" GALVANIZED NAIL
21	797,921.137	8,676,136.046	05-01-07	SET 3/8" - 30" IRON PIN WITH 1 1/2" ALUMINIUM CAP MARKED OREGON STATE HWY. DEPT.



REGISTERED PROFESSIONAL LAND SURVEYOR

C. B. Stockhoff

OREGON
July 10, 1996
Curtis B. Stockhoff
2765

EXPIRES: 6/30/10

OREGON DEPARTMENT OF TRANSPORTATION

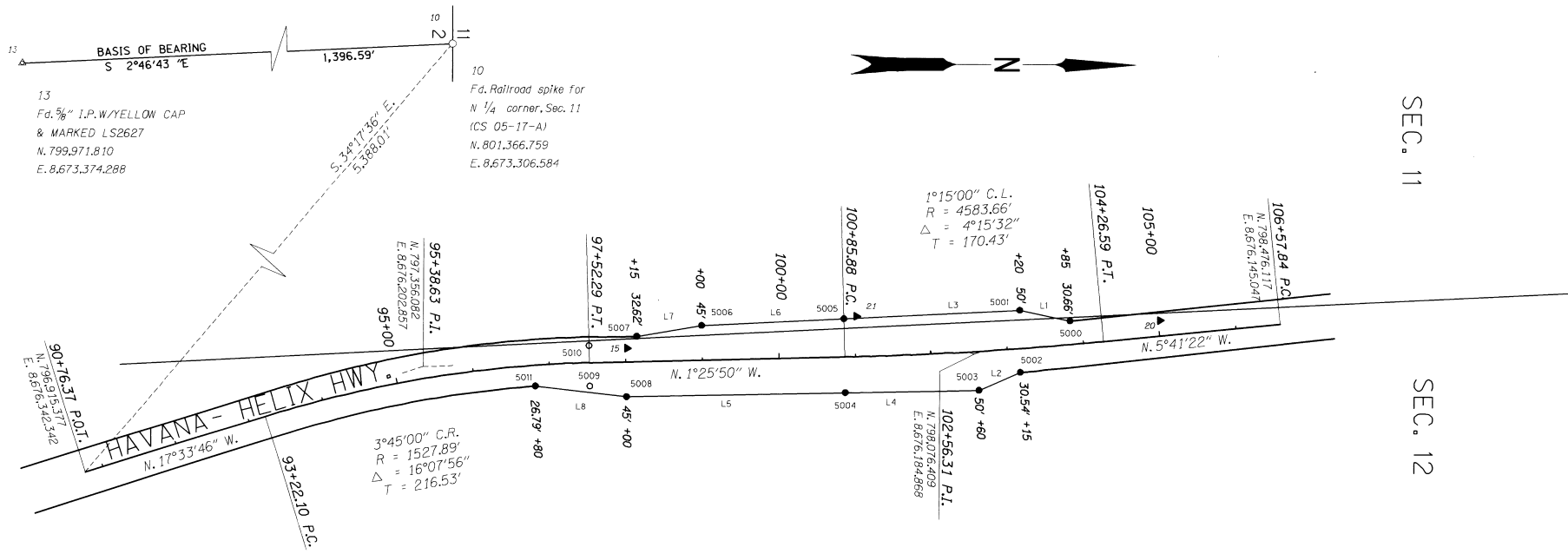
HORIZONTAL CONTROL AND
RIGHT OF WAY BOUNDARY MONUMENTATION MAP
GREASEWOOD CREEK BRIDGE
HAVANA - HELIX HIGHWAY
(OR 335 M.P. 0.99 TO M.P. 0.87)
UMATILLA COUNTY

ODOT REGION 5
3012 ISLAND AVE.
LA GRANDE, OR. 97850
KEY NO. 12795

Umatilla County Surveyor
2-07
09-11-B

OCTOBER 31, 2008
SHEET 1 OF 2

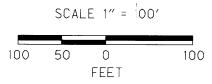
SEC. 11 and 12, T. 4 N., R. 33 E., W.M.



LINE	DISTANCE (FT)	BEARING
L1	67.27'	S 11°56'46\" W
L2	58.80'	S 23°16'40\" W
L3	231.54'	S 02°55'42\" W
L4	175.98'	S 01°13'30\" W
L5	285.88'	S 01°13'30\" W
L6	185.94'	S 02°55'42\" W
L7	85.90'	S 09°43'14\" W
L8	119.85'	S 06°29'41\" W

LEGEND

- ▲ SET NETWORK POINT
- △ FOUND MONUMENT USED AS NETWORK POINT
- SET R/W MONUMENT
- SET REFERENCE POINT
- RIGHT-OF-WAY



SET MONUMENT LIST

PT. NO.	LDP NORTHING	LDP EASTING	STATION	OFFSET (FT)	DESCRIPTION & REFERENCE DOCUMENTS
5000	798,201.838	8,676,141.372	103+85	30.66' Lt.	Set 5/8" x 30" Rebar with A 1 1/2" dia. OREGON STATE HWY. DEPT. aluminium cap
5001	798,136.027	8,676,127.449	103+20	50.00' Lt.	Set 5/8" x 30" Rebar with A 1 1/2" dia. OREGON STATE HWY. DEPT. aluminium cap
5002	798,137.127	8,676,208.136	103+15	30.54' Rt.	Set 5/8" x 30" Rebar with A 1 1/2" dia. OREGON STATE HWY. DEPT. aluminium cap
5003	798,083.117	8,676,231.372	102+60	50.00' Rt.	Set 5/8" x 30" Rebar with A 1 1/2" dia. OREGON STATE HWY. DEPT. aluminium cap
5004	797,907.179	8,676,235.138	100+85.88 PC	46.03' Rt.	Set 5/8" x 30" Rebar with A 1 1/2" dia. OREGON STATE HWY. DEPT. aluminium cap
5005	797,904.785	8,676,139.279	100+85.88 PC	49.86' Lt.	Set 5/8" x 30" Rebar with A 1 1/2" dia. OREGON STATE HWY. DEPT. aluminium cap
5006	797,719.084	8,676,148.778	99+00	45.00' Lt.	Set 5/8" x 30" Rebar with A 1 1/2" dia. OREGON STATE HWY. DEPT. aluminium cap
5007	797,634.420	8,676,163.276	98+15	32.62' Lt.	Set 5/8" x 30" Rebar with A 1 1/2" dia. OREGON STATE HWY. DEPT. aluminium cap
5008	797,621.363	8,676,241.246	98+00	45.00' Rt.	Set 5/8" x 30" Rebar with A 1 1/2" dia. OREGON STATE HWY. DEPT. aluminium cap
5009	797,573.293	8,676,227.442	97+52.29 PT	30.00' Rt.	Set 5/8" x 30" Rebar with A 1 1/2" dia. OREGON STATE HWY. DEPT. aluminium cap (SHRP)
5010	797,571.995	8,676,175.458	97+52.29 PT	22.00' Lt.	Set 5/8" x 30" Rebar with A 1 1/2" dia. OREGON STATE HWY. DEPT. aluminium cap (SHRP)
5011	797,502.281	8,676,227.685	96+80	26.79' Rt.	Set 5/8" x 30" Rebar with A 1 1/2" dia. OREGON STATE HWY. DEPT. aluminium cap



REGISTERED PROFESSIONAL LAND SURVEYOR

OREGON
July 10, 1996
Curtis B. Stockhoff
2165
EXPIRES: 6/30/10

OREGON DEPARTMENT OF TRANSPORTATION
HORIZONTAL CONTROL AND RIGHT OF WAY BOUNDARY MONUMENTATION
GREASEWOOD CREEK BRIDGE
HAVANA - HELIX HIGHWAY
(OR 335 M.P. 0.99 TO M.P. 0.87)
UMATILLA COUNTY
ODOT REGION 5
3012 ISLAND AVE.
LA GRANDE, OR. 97850
KEY NO. 12795
October 31, 2008
SHEET 2 OF 2

2-07
09-41-B