

SEC. 4, 5, 8, and 9, T. 3 N., R. 29 E., W.M.

CONTROL

RECOVERED MONUMENT LIST					
PT. NO.	LDP NORTHING	LDP EASTING	STATION	OFFSET	DESCRIPTION
1010	767,346.468	8,533,125.278	"A"14+82.86	256.59' Rt.	FOUND 3/4" IRON ROD WITH ALUMINUM CAP MARKED "OSHD"
1011	767,512.034	8,533,233.003	"A"13+38.74	137.58' Rt.	FOUND 3/4" IRON REBAR WITH YELLOW PLASTIC CAP
1012	767,545.367	8,533,254.907	662+44.56	114.28' Rt.	FOUND 3/4" IRON REBAR WITH YELLOW PLASTIC CAP
3030	766,693.214	8,533,693.214	"A"23+78.72 P.O.T.	0.00'	FOUND 3" BRASS CAP MARKED "OSHD REFERENCE 23+78.72 POT" ON CENTERLINE OF LEXINGTON-ECHO HIGHWAY
3099	767,315.648	8,533,320.762	"A"15+31.89	66.67' Rt.	FOUND 3/4" REBAR WITH 1-1/2" DIA. ALUMINIUM CAP MARKED "OREGON STATE HWY DIV 10"
1356	767,310.693	8,532,003.438	1356+14.38 P.O.T.	0.00'	RESET 3" BRASS CAP MARKED "OREGON STATE HIGHWAY DIV. 1356+14.38 POT" ON COMMON CENTERLINE OF I-84
3022	767,901.156	8,529,796.250	"WB"1353+31.36	18.37' Lt.	SET 3/4" X30" IRON ROD WITH ALUMINIUM CAP "OREGON STATE HWY DIV"
3032	767,846.804	8,503,271.270	"WB"1338+06.54	71.30' Lt.	SET 3/4" X30" IRON ROD WITH ALUMINIUM CAP "OREGON STATE HWY DIV"
3091	766,780.760	8,534,320.418	1379+91.45 P.O.T.	0.00'	FOUND 2-1/2" BRASS DISK MARKED "HIGHWAY REFERENCE 1379+91.45 BK 268+36.10 AH" EQUATION ON COMMON CENTERLINE OF I-84
3092	768,584.696	8,526,434.159	1299+00.00 P.O.T.	0.00'	FOUND 2-1/2" BRASS DISK MARKED "HIGHWAY REFERENCE 1299+00 POT" ON COMMON CENTERLINE OF I-84
3095	766,794.773	8,532,402.289	"WB"1370+93.31	256.07' Rt.	FOUND 2-1/2" BRASS DISK MARKED "13N R29E S5, S4, S8, S9"

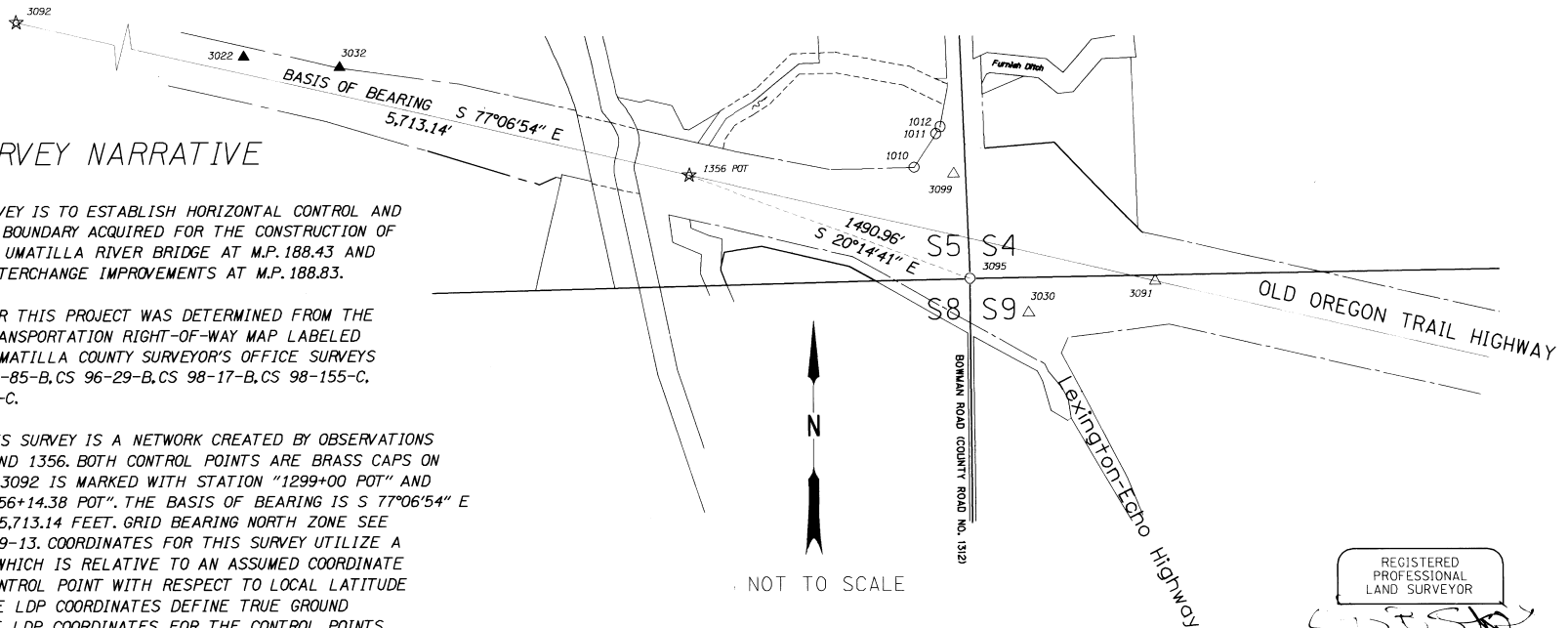
SURVEY NARRATIVE

THE PURPOSE OF THIS SURVEY IS TO ESTABLISH HORIZONTAL CONTROL AND DEFINE THE RIGHT-OF-WAY BOUNDARY ACQUIRED FOR THE CONSTRUCTION OF INTERSTATE 84, EASTBOUND UMATILLA RIVER BRIDGE AT M.P. 188.43 AND I-84/U.S. 395 STANFIELD INTERCHANGE IMPROVEMENTS AT M.P. 188.83.

RIGHT-OF-WAY ACQUIRED FOR THIS PROJECT WAS DETERMINED FROM THE OREGON DEPARTMENT OF TRANSPORTATION RIGHT-OF-WAY MAP LABELED 5B-29-13 AND FROM THE UMATILLA COUNTY SURVEYOR'S OFFICE SURVEYS AND PLATS LABELED: CS 92-85-B, CS 96-29-B, CS 98-17-B, CS 98-155-C, CS 99-256-B, AND CS 01-14-C.

BASIS OF BEARING FOR THIS SURVEY IS A NETWORK CREATED BY OBSERVATIONS TO CONTROL POINTS 3092 AND 1356. BOTH CONTROL POINTS ARE BRASS CAPS ON COMMON CENTERLINE. POINT 3092 IS MARKED WITH STATION "1299+00 POT" AND POINT 1356 IS MARKED "1356+14.38 POT". THE BASIS OF BEARING IS S 77°06'54" E (GRID) AND A DISTANCE OF 5,713.14 FEET. GRID BEARING NORTH ZONE SEE REFERENCE DOCUMENT 5B-29-13. COORDINATES FOR THIS SURVEY UTILIZE A LOCAL DATUM PLANE (LDP) WHICH IS RELATIVE TO AN ASSUMED COORDINATE SYSTEM USING A SINGLE CONTROL POINT WITH RESPECT TO LOCAL LATITUDE AND GROUND ELEVATION. THE LDP COORDINATES DEFINE TRUE GROUND DISTANCES. TO CONVERT THE LDP COORDINATES, FOR THE CONTROL POINTS, TO THE GROUND ASSUMED COORDINATES, MULTIPLY THE LDP COORDINATES BY 0.99992017. OBSERVATIONS OF THE CONTROL POINTS FOR GROUND MEASUREMENTS WERE MADE USING A LEICA TCA 1800 ELECTRONIC TOTAL STATION.

THE RIGHT-OF-WAY BOUNDARY MONUMENTATION WAS DETERMINED BY STATION AND OFFSET USING THE WESTBOUND CENTERLINE ALIGNMENT. CHANGES IN DIRECTION WERE MONUMENTED USING 3/4" X30" IRON RODS WITH AN 1 1/2" DIAMETER ALUMINIUM CAP. A POST AND PLACARD WITH HIGHWAY STATIONING AND OFFSET FROM THE WESTBOUND CENTERLINE ALIGNMENT WERE SET AT EACH MONUMENT. A MONUMENT ON THE COMMON CENTERLINE AT STATION 1356+14.38 P.O.T. WAS DISTURBED BY CONSTRUCTION WAS RESET FROM COORDINATES USING A 3" DIAMETER BRASS CAP SET IN CONCRETE. A CARSONITE POST WAS SET NEXT TO THE MONUMENT AT COMMON CENTERLINE STATION 1356+14.38 P.O.T. THE RIGHT-OF-WAY MONUMENTATION WAS COMPLETED ON SEPTEMBER 24, 2009.



LEGEND	
☆	GPS POINTS USED FOR BASIS OF BEARINGS
△	FOUND GPS POINT NOTED IN TABLE
○	FOUND MONUMENT NOTED IN TABLE
▲	SET GPS POINT
☆-☆	BASIS OF BEARING

REGISTERED PROFESSIONAL LAND SURVEYOR

OREGON
July 10, 1996
Curtis B. Stockhoff
2765

EXPIRES: 6/30/10

OREGON DEPARTMENT OF TRANSPORTATION
HORIZONTAL CONTROL, RECOVERY AND MONUMENTATION MAP
1-84/US395: STANFIELD INTERCHANGE IMPROVEMENTS SEC.
OLD OREGON TRAIL HIGHWAY
UMATILLA COUNTY

ODOT REGION 5
3012 ISLAND AVE.
LA GRANDE, OR. 97850-9497

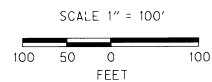
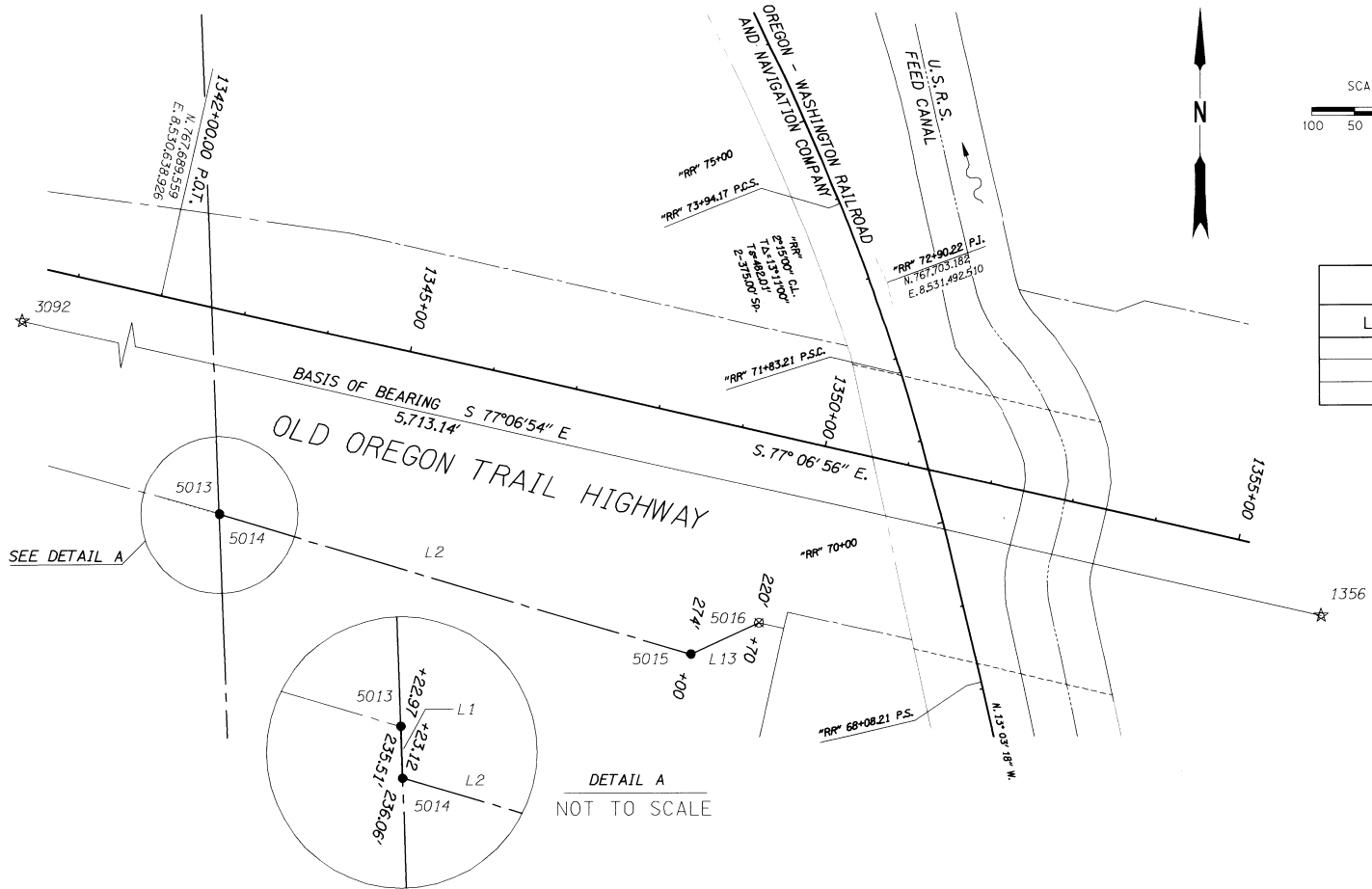
2-2010
MARCH 9, 2009
SHEET 1 OF 4

10-DJ-B

SEC. 4, 5, 8, and 9, T. 3 N., R. 29 E., W.M.
MONUMENTATION

SET & RECOVERED MONUMENT LIST

PT. NO.	LDP NORTHING	LDP EASTING	STATION	OFFSET	DESCRIPTION
5013	767,432.561	8,530,706.288	"WB"1343+22.97	235.51' Rt.	SET 5/8"X30" REBAR WITH 1-1/2" DIA. ALUMINUM CAP MARKED "OREGON STATE HWY DIV"
5014	767,431.990	8,530,706.307	"WB"1343+23.13	236.06' Rt.	SET 5/8"X30" REBAR WITH 1-1/2" DIA. ALUMINUM CAP MARKED "OREGON STATE HWY DIV"
5015	767,266.370	8,531,260.204	"WB"1349+00	274.00' Rt.	SET 5/8"X30" REBAR WITH 1-1/2" DIA. ALUMINUM CAP MARKED "OREGON STATE HWY DIV"
5016	767,303.361	8,531,340.652	"WB"1349+70.17	220.00' Rt.	CALCULATED POINT NOT SET
1356	767,310.693	8,532,003.438	1356+14.38 P.O.T.	0.00'	RESET 3" BRASS CAP MARKED "OREGON STATE HIGHWAY DIV. 1356+14.38 POT" ON COMMON CENTERLINE OF I-84
3092	768,584.696	8,526,434.159	1299+00.00 P.O.T.	0.00'	FOUND 2-1/2" BRASS DISK MARKED "HIGHWAY REFERENCE 1299+00 POT" ON COMMON CENTERLINE OF I-84



LEGEND	
☆	GPS POINTS USED FOR BASIS OF BEARINGS
●	SET R/W MONUMENT
⊗	CALCULATED POINT
---	1/4TH LINE
---	WEST BOUND CENTERLINE
---	COMMON CENTERLINE
☆---	BASIS OF BEARING
---	R/W ACCESS FEE LINE
---	FALSE CALL LINE

LINE TABLE		
LINE	DISTANCE (FT)	BEARING
L1	00.57'	S 01°54'21" E
L2	578.13'	S 73°21'10" E
L13	88.41'	N 65°14'16" E

REGISTERED PROFESSIONAL LAND SURVEYOR

OREGON
July 10, 1996
Curtis B. Stockhoff
2765
EXPIRES: 6/30/10

OREGON DEPARTMENT OF TRANSPORTATION
HORIZONTAL CONTROL, RECOVERY AND MONUMENTATION MAP
1-84/US395: STANFIELD INTERCHANGE IMPROVEMENTS SEC.
OLD OREGON TRAIL HIGHWAY
UMATILLA COUNTY

ODOT REGION 5
3012 ISLAND AVE.
LA GRANDE, OR. 97850-9497

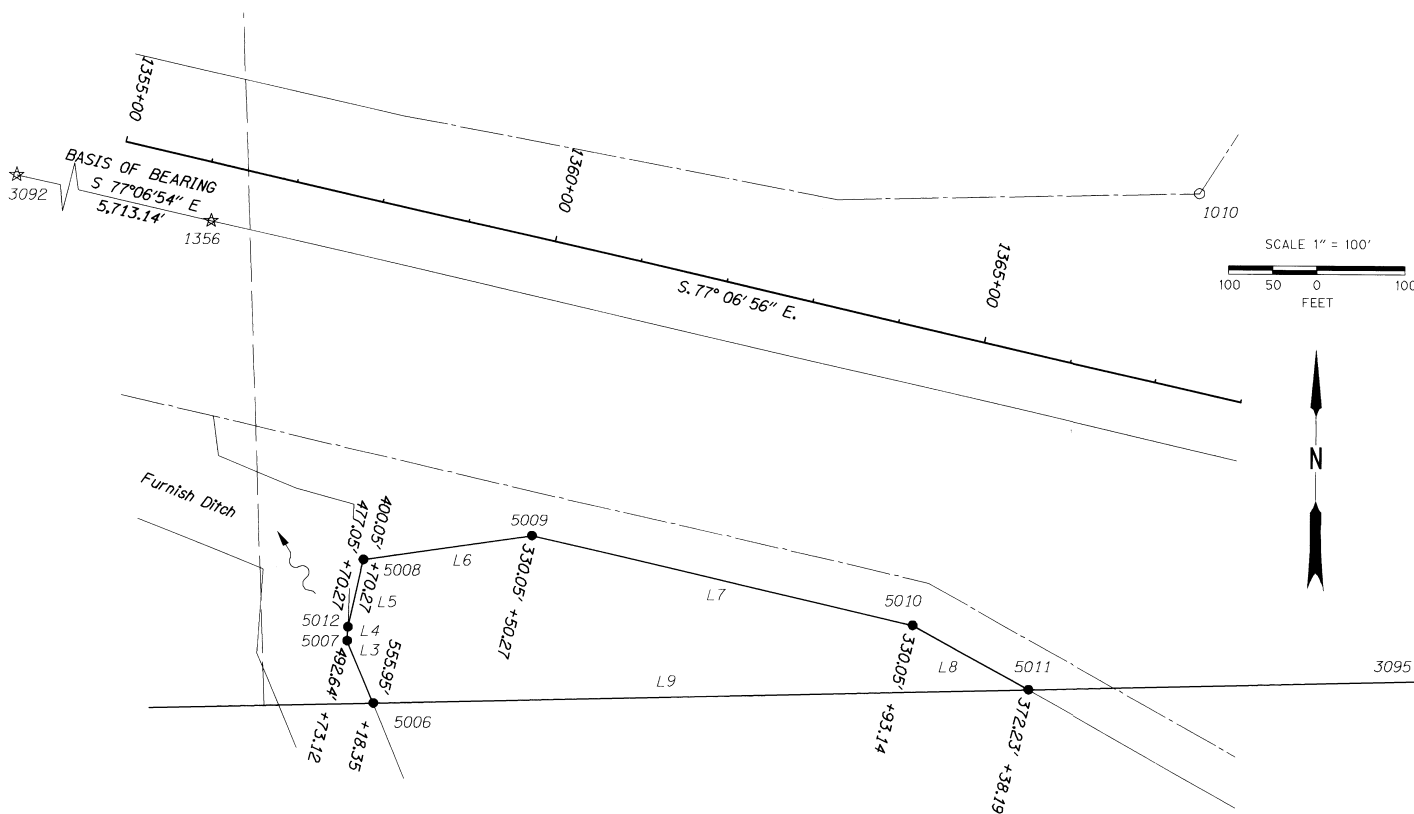
MARCH 9, 2010
SHEET 2 OF 4

2-2010
10-07-B

SEC. 4, 5, 8, and 9, T. 3 N., R. 29 E., W.M.
MONUMENTATION

SET & RECOVERED MONUMENT LIST

PT. NO.	LDP NORTHING	LDP EASTING	STATION	OFFSET	DESCRIPTION
5006	766,764.441	8,532,190.040	"WB"1359+18.35	555.95' Rt.	SET 5/8"X30" REBAR WITH 1-1/2" DIA. ALUMINUM CAP MARKED "OREGON STATE HWY DIV"
5007	766,836.243	8,532,160.065	"WB"1358+73.12	492.64' Rt.	SET 5/8"X30" REBAR WITH 1-1/2" DIA. ALUMINUM CAP MARKED "OREGON STATE HWY DIV"
5008	766,927.132	8,532,177.936	"WB"1358+70.27	400.05' Rt.	SET 5/8"X30" REBAR WITH 1-1/2" DIA. ALUMINUM CAP MARKED "OREGON STATE HWY DIV"
5009	766,955.237	8,532,369.012	"WB"1360+50.27	330.05' Rt.	SET 5/8"X30" REBAR WITH 1-1/2" DIA. ALUMINUM CAP MARKED "OREGON STATE HWY DIV"
5010	766,856.494	8,532,800.739	"WB"1364+93.14	330.05' Rt.	SET 5/8"X30" REBAR WITH 1-1/2" DIA. ALUMINUM CAP MARKED "OREGON STATE HWY DIV"
5011	766,783.024	8,532,932.721	"WB"1365+38.19	372.23' Rt.	SET 5/8"X30" REBAR WITH 1-1/2" DIA. ALUMINUM CAP MARKED "OREGON STATE HWY DIV"
5012	766,852.070	8,532,160.768	"WB"1358+70.27	477.05' Rt.	SET 5/8"X30" REBAR WITH 1-1/2" DIA. ALUMINUM CAP MARKED "OREGON STATE HWY DIV"
10:10	767,346.468	8,533,125.278	"A"14+82.86	256.59' Rt.	FOUND 5/8" IRON ROD WITH ALUMINUM CAP MARKED "OREGON STATE HWY DIV"
1356	767,310.693	8,532,003.438	1356+14.38 P.O.T.	0.00'	RESET 3" BRASS CAP MARKED "OREGON STATE HIGHWAY DIV. 1356+14.38 POT" ON COMMON CENTERLINE OF I-84
3092	768,584.696	8,526,434.159	1299+00 P.O.T.	0.00'	FOUND 2-1/2" BRASS DISK MARKED "HIGHWAY REFERENCE 1299+00 POT" ON COMMON CENTERLINE OF I-84
3095	766,794.773	8,532,402.289	"WB"1370.93.31	256.07' Rt.	FOUND 2-1/2" BRASS DISK MARKED "T3N R29E S5, S4, S8, S9"



LINE	DISTANCE (FT)	BEARING
L3	77.81'	N 22° 39' 32" W
L4	15.84'	N 02° 32' 36" E
L5	77.00'	N 12° 52' 59" E
L6	193.13'	N 81° 37' 57" E
L7	442.88'	S 77° 07' 02" E
L8	151.05'	S 60° 53' 48" E
L9	742.91'	S 88° 34' 00" W

☆	GPS POINTS USED FOR BASIS OF BEARINGS
○	FOUND MONUMENT USED AS A GPS POINT AS NOTED IN TABLE
●	SET R/W MONUMENT
—	1/16TH LINE
—	WEST BOUND CENTERLINE
—	COMMON CENTERLINE
☆—☆	BASIS OF BEARING
—	R/W ACCESS FEE LINE
—	EXISTING RIGHT-OF-WAY
—	NEW RIGHT-OF-WAY
.....	FALSE CALL LINE

REGISTERED PROFESSIONAL LAND SURVEYOR

OREGON
July 10, 1996
Curtis B. Stockhoff
2765

EXPIRES: 6/30/10

OREGON DEPARTMENT OF TRANSPORTATION
HORIZONTAL CONTROL, RECOVERY AND MONUMENTATION MAP
I-84/US395: STANFIELD INTERCHANGE IMPROVEMENTS SEC.
ENGLISH OLD OREGON TRAIL HIGHWAY
UMATILLA COUNTY

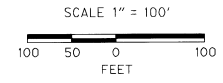
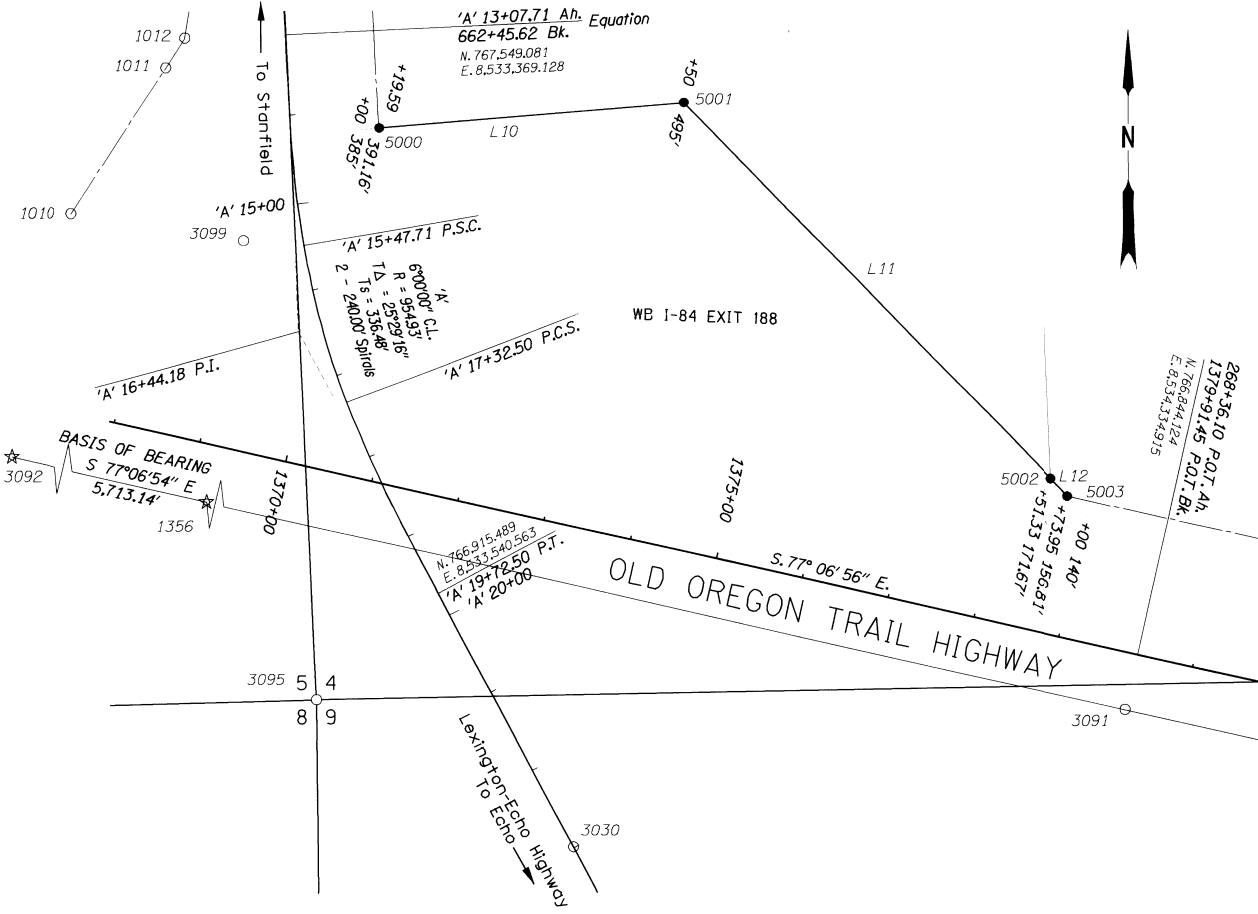
ODOT REGION 5
3012 ISLAND AVE.
LA GRANDE, OR. 97850-9497

2-2010 MARCH 9, 2009
KS SHEET 3 OF 4
10-07-B

SEC. 4, 5, 8, and 9, T. 3 N., R. 29 E., W.M.
MONUMENTATION

SET & RECOVERED MONUMENT LIST

PT. NO.	LDP NORTHING	LDP EASTING	STATION	OFFSET	DESCRIPTION
5000	767,442.142	8,533,474.746	"WB"1370+19.59	391.16' Lt.	SET 5/8"X30" REBAR WITH 1-1/2" DIA. ALUMINUM CAP MARKED "OREGON STATE HWY DIV"
5001	767,469.694	8,533,819.993	"WB"1373+50	495.00' Lt.	SET 5/8"X30" REBAR WITH 1-1/2" DIA. ALUMINUM CAP MARKED "OREGON STATE HWY DIV"
5002	767,042.718	8,534,236.607	"WB"1378+51.33	171.67' Lt.	SET 5/8"X30" REBAR WITH 1-1/2" DIA. ALUMINUM CAP MARKED "OREGON STATE HWY DIV"
5003	767,023.094	8,534,255.755	"WB"1378+73.95	156.81' Lt.	SET 5/8"X30" REBAR WITH 1-1/2" DIA. ALUMINUM CAP MARKED "OREGON STATE HWY DIV"
1010	767,346.468	8,533,125.278	"A"14+82.86	256.59' Rt.	FOUND 5/8" IRON ROD WITH 1-1/2" DIA. ALUMINUM CAP MARKED "OREGON STATE HWY DIV"
1011	767,512.034	8,533,233.003	"A"13+38.74	137.58' Rt.	FOUND 5/8" IRON REBAR WITH YELLOW PLASTIC CAP
1012	767,545.367	8,533,254.907	662+44.56	114.28' Rt.	FOUND 5/8" IRON REBAR WITH YELLOW PLASTIC CAP
1356	767,310.693	8,532,003.438	1356+14.38 P.O.T.	0.00'	RESET 3" BRASS CAP MARKED "OREGON STATE HIGHWAY DIV. 1356+14.38 POT" ON COMMON CENTERLINE OF I-84
3030	766,693.214	8,533,693.214	"A"23+78.72 P.O.T.	0.00'	FOUND 3" BRASS CAP MARKED "OSHD REFERENCE 23+78.72 POT" ON CENTERLINE OF THE LEXINGTON-ECHO HIGHWAY
3091	766,780.760	8,534,320.418	1379+91.45 P.O.T.	0.00'	FOUND 2-1/2" BRASS DISK MARKED "HIGHWAY REFERENCE 1379+91.45 BK 268+36.10 AH" EQUATION ON COMMON CENTERLINE OF I-84
3092	768,584.696	8,526,434.159	1299+00 P.O.T.	0.00'	FOUND 2-1/2" BRASS DISK MARKED "HIGHWAY REFERENCE 1299+00 POT" ON COMMON CENTERLINE OF I-84
3095	766,794.773	8,532,402.289	"WB"1370+93.31	256.07' Rt.	FOUND 2-1/2" BRASS DISK MARKED "T3N R29E S5,S4,S8,S9"
3099	767,315.648	8,533,320.762	"A"15+31.89	66.67' Rt.	FOUND 5/8"X30" REBAR WITH 1-1/2" DIA. ALUMINUM CAP OREGON STATE HWY DIV 10"



LINE TABLE		
LINE	DISTANCE (FT)	BEARING
L10	346.34'	N 85°26'14" E
L11	596.55'	S 44°17'47" E
L12	231.54'	S 44°17'47" E

LEGEND

- ☆ GPS POINTS USED FOR BASIS OF BEARINGS
- FOUND MONUMENT USED AS A GPS POINT AS NOTED IN TABLE
- SET R/W MONUMENT WEST BOUND CENTERLINE COMMON CENTERLINE
- ☆-☆ BASIS OF BEARING
- EXISTING RIGHT-OF-WAY
- NEW RIGHT-OF-WAY
- FALSE CALL LINE

REGISTERED PROFESSIONAL LAND SURVEYOR

CURTIS B. STOCKHOFF

OREGON
July 10, 1996
Curtis B. Stockhoff
2765

EXPIRES: 6/30/10

OREGON DEPARTMENT OF TRANSPORTATION
HORIZONTAL CONTROL, RECOVERY AND MONUMENTATION MAP
I-84/US395: STANFIELD INTERCHANGE IMPROVEMENTS SEC. 4
ENGLISH OLD OREGON TRAIL HIGHWAY
UMATILLA COUNTY

ODOT REGION 5
3012 ISLAND AVE.
LA GRANDE, OR. 97850-9497

MARCH 9, 2010
SHEET 4 OF 4

2-2010
R-02-R