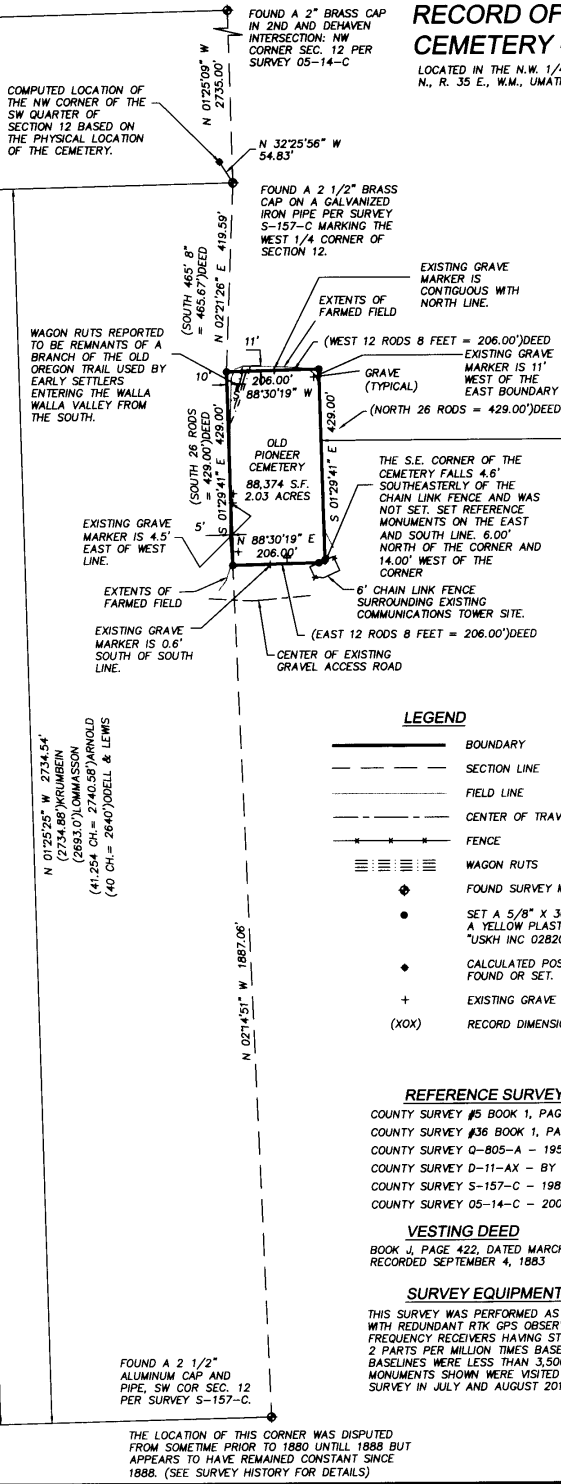


FILE: I:\1262600\SURVEY\DWG\1262600-ROS-STATEPLANE.DWG PLOTTED: Aug 24, 2010 - 4:44:50 PM. (Greg Flowers)



RECORD OF SURVEY FOR THE OLD PIONEER CEMETERY - MILTON FREEWATER, OREGON

LOCATED IN THE N.W. 1/4 OF THE S.W. 1/4 OF SECTION 12, T. 5 N., R. 35 E., W.M., UMATILLA COUNTY, OREGON

BASIS OF BEARINGS

AN OREGON COORDINATE SYSTEM NORTH ZONE BEARING OF N 01°25'09" W ALONG THE WEST LINE OF THE NW 1/4 OF SECTION 12 BETWEEN THE WEST 1/4 CORNER AND THE NW CORNER OF SAID SECTION 12 AS COMPUTED FROM COORDINATES SHOWN ON COUNTY SURVEY 05-14-C. THE CONVERGENCE ANGLE AT THE SW CORNER OF SECTION 12 IS 1°29'41". TO ACHIEVE GEODETIC BEARINGS APPLY A CLOCKWISE ROTATION.

DISTANCE SHOWN HEREON ARE TRUE GROUND DISTANCES THE COMBINED GROUND TO GRID SCALE FACTOR IS 0.99992449922346



SURVEY HISTORY:

THE LINE COMMON TO SECTIONS 11 ANT 12, TOWNSHIP 5 NORTH RANGE 35 EAST WAS ORIGINALLY SURVEYED BY U.S. DEPUTY SURVEYORS WILLIAM ODELL AND WILLIAM LEWIS UNDER THEIR CONTRACT NUMBER 110, DATED APRIL 1865. THE SURVEYOR GENERALS NOTES STATE "SET POST CORNER, DROVE CHARRED STAKE, DUG PITS AND RAISED MOUNDS" AT THE SECTION CORNERS AND QUARTER CORNER.

COUNTY SURVEY NUMBER 5 RECORDED IN BOOK 1 OF SURVEYS, PAGE 10 DATED 1880, DEPUTY COUNTY SURVEYOR J.H. RALEY FOUND NO EVIDENCE OF THE SECTION CORNER COMMON TO SECTIONS 11, 12, 13 AND 14 OR THE 1/4 CORNER COMMON TO SECTIONS 11 AND 12 AND RE-ESTABLISHED THE SECTION CORNER COMMON TO SECTIONS 11, 12, 13 AND 14 BY DOUBLE PROPORTIONATE MEASUREMENTS AND SET THE PERMANENT CORNER. RALEY DOES NOT INDICATE WHAT HE SET FOR THE PERMANENT CORNER. RALEY'S SURVEY INDICATES THAT THE EXISTING FENCE RUNNING NORTH FROM THE SW CORNER OF SECTION 24 TO THE NW CORNER OF SECTION 12 DIVERGED FROM THE SECTION LINES AND WAS SUBSTANTIALLY WEST OF THE SURVEYED LINE. RALEY ALSO INDICATES THAT THERE WAS A CORNER SET BY SHAIION 35 RODS (577.5') WEST OF HIS CORNER. I FOUND NO RECORD OF THE SHAIION CORNER.

COUNTY SURVEY NUMBER 36 RECORDED IN BOOK 1 OF SURVEYS, PAGE 193 DATED 1888. JNO. ARNOLD, COUNTY SURVEYOR REJECTED A POST AT THE CORNER COMMON TO SECTIONS 11, 12, 13 AND 14 AND RE-ESTABLISHED THE CORNER BY SINGLE PROPORTIONATE MEASUREMENTS BETWEEN THE CORNER COMMON TO SECTIONS 13, 14, 23 AND 24 AND THE CORNER COMMON TO SECTIONS 1, 2, 11 AND 12. ARNOLD SET A BASALT STONE 18X11X5 INCHES 96 LINKS (63.36') SOUTH AND 20 LINKS (13.2') EAST OF THE DISPUTED CORNER AND SET A BASALT STONE 11X7X5 INCHES AT THE MIDPOINT OF THE LINE COMMON TO SECTIONS 11 AND 12 FOR THE 1/4 CORNER. ARNOLD'S SURVEY INDICATES THAT HE CROSSES THE SOUTH AND NORTH LINES OF THE CEMETERY ON HIS INITIAL SURVEY OF THE LINE FROM THE CORNER COMMON TO SECTIONS 13, 14, 23 AND 24 AND THE CORNER COMMON TO SECTIONS 1, 2, 11 AND 12.

THE CORNER COMMON TO SECTIONS 1, 2, 11 AND 12 SEEMS TO HAVE REMAINED CONSTANT AS A PERPETUATION OF THE ORIGINAL CORNER.

COUNTY SURVEY Q-805-A BY OFNER DATED 1950 SHOWS THAT A STONE WAS FOUND AT THE CORNER COMMON TO SECTIONS 11, 12, 13, AND 14.

COUNTY SURVEY D-11-AX BY LOMMASSON SHOWS THAT A STONE WAS FOUND AT THE CORNER COMMON TO SECTIONS 11, 12, 13 AND 14 AND A STONE 6' X 8' X 18" AND A 3/4" RE STEEL ROD WAS SET AT THE MID POINT OF THE LINE COMMON TO SECTIONS 11 AND 12 FOR THE 1/4 CORNER. NO MENTION WAS MADE OF THE ARNOLD STONE AT THE 1/4 CORNER.

ON COUNTY SURVEY S-157-C DATED 1981 KRUMBEIN SAYS THAT HE FOUND A 2" IRON PIPE WITH STEEL FENCE POST ANJUMENT SIGN. HE REPLACED THE 2" IRON PIPE WITH AN ALUMINUM CAP. HE DID NOT FIND LOMMASSON'S 1/4 CORNER AND SET A BRASS CAP AT THE MID POINT OF THE LINE COMMON TO SECTIONS 11 AND 12 FOR THE 1/4 CORNER.

I FOUND KRUMBEIN'S MONUMENTS AT THE SECTION CORNER COMMON TO SECTIONS 11, 12, 13 AND 14 AND THE 1/4 CORNER COMMON TO SECTIONS 11 AND 12 AS SHOWN HEREON.

OWNERSHIP HISTORY:

RECORDS INDICATE THAT THE NW 1/4 OF THE SW 1/4 OF SECTION 12 WAS CONVEYED TO WILLIAM MCCOY BY PATENT SIGNED BY PRESIDENT U.S. GRANT, DATED JANUARY 15, 1876 RECORDED NOVEMBER 3, 1881 IN BOOK G OF DEEDS AT PAGE 279. ON SEPTEMBER 19, 1877 WILLIAM MCCOY AND T.A. MCCOY HIS WIFE DEEDED THE NW 1/4 OF THE SW 1/4 OF SECTION 12 TO W.P. FRENCH BY DEED RECORDED OCTOBER 17, 1877 IN BOOK C OF DEEDS AT PAGE 625. ON MARCH 2, 1880 W.P. FRENCH AND MARY FRENCH HIS WIFE DEEDED THE SW 1/4 OF SECTION 12 TO A.M. ELAM BY DEED RECORDED APRIL 17, 1880 IN BOOK E OF DEEDS AT PAGE 176. ON MARCH 26, 1883 A.M. ELAM AND MARTHA L. ELAM HIS WIFE DEEDED 2 ACRES LOCATED IN THE NW 1/4 OF THE SW 1/4 OF SECTION 12 TO THE TRUSTEES OF THE MILTON BURYING GROUND SOCIETY BY DEED RECORDED SEPTEMBER 4, 1883 IN BOOK J OF DEEDS AT PAGE 422. THAT PORTION OF THE NW 1/4 OF THE SW 1/4 OF SECTION 12 AND THE NE 1/4 OF THE SE 1/4 OF SECTION 11 THAT IS ADJACENT TO THE CEMETERY IS CURRENTLY OWNED AND FARMED BY LOUISE PIPER.

NARRATIVE

THIS SURVEY WAS PERFORMED FOR THE OLD PIONEER CEMETERY AT THE REQUEST OF NANCY DOHERTY TO DETERMINE AND MARK THE DEEDED CEMETERY BOUNDARIES.

BURIAL RECORDS FOR THE CEMETERY INDICATE THAT THE FIRST RECORDED BURIAL WAS THAT OF A CHILD IN 1878. THE MILTON BURYING GROUND SOCIETY WAS DEEDED 2 ACRES IN THE NW 1/4 OF THE SW 1/4 OF SECTION 12, TOWNSHIP 5 NORTH, RANGE 35 EAST OF THE WILLAMETTE MERIDIAN BY A.M. ELAM AND HIS WIFE IN 1883. COUNTY SURVEY NUMBER 16 BY JNO. ARNOLD DATED 1888 INDICATED THAT THE CEMETERY WAS IN EXISTENCE AT THE TIME OF HIS SURVEY.

SURVEY RECORDS INDICATE THAT AS EARLY AS 1880 THE POSITION OF THE SW CORNER AND WEST 1/4 CORNER OF SECTION 12 WAS IN QUESTION AND CHANGED LOCATION SEVERAL TIMES BETWEEN 1865 AND 1888. THE CHANGING POSITION OF THE SECTION AND QUARTER SECTION CORNERS HAS RESULTED IN MAKING THE REFERENCE FROM THE QUARTER CORNER TO THE NW CORNER OF THE CEMETERY INVALID. HOWEVER THE LOCATION OF THE CEMETERY HAS BEEN CONSTANT AS WITNESSED BY GRAVE MARKERS, FIELD LINES, WAGON RUTS AND REFERENCE TO THE NORTH AND SOUTH LINE OF THE CEMETERY MADE BY JNO. ARNOLD COUNTY IN SURVEY NUMBER 36, DATED 1888. THEREFORE, HOLDING THE PHYSICAL LOCATION OF THE CEMETERY AS THE BEST EVIDENCE AVAILABLE, I HAVE ORIENTED THE CEMETERY BOUNDARY BASED ON DEED DIMENSIONS USING THE EXISTING FIELD LINES ON THE EAST AND WEST AND EXISTING GRAVE MARKERS ON THE NORTH AND SOUTH SUCH THAT IF ROTATED TO GEODETIC THE BOUNDARIES ARE ALL RUNNING CARDINAL AS INDICATED BY THE DEED. WHEN I COMPUTE THE LOCATION FOR THE WEST 1/4 CORNER OF SECTION 12 BASED ON THE PHYSICAL LOCATION OF THE CEMETERY IT IS N32°25'56" W FROM THE BRASS CAP THAT HAS BEEN HELD AS THE 1/4 CORNER SINCE 1981. THIS IS NOT UNREASONABLE, HOWEVER, SINCE THE CURRENT LOCATION OF THE 1/4 COMMON TO SECTIONS 11 AND 12 HAS BEEN RELIED UPON SINCE 1981 AND THE POSITION OF THE SECTION CORNER COMMON TO SECTIONS 11, 12, 13 AND 14 APPEARS TO HAVE BEEN RELIED UPON SINCE 1888 AND SINCE THE CEMETERY IS WHERE IT ALWAYS HAS BEEN, THE MOST EQUITABLE SOLUTION IS TO MONUMENT THE CEMETERY DEED CORNERS AT THEIR PHYSICAL LOCATION AS SHOWN HEREON AND TO CAUSE THERE TO BE TWO ANGLE POINTS IN THE LINE COMMON TO THE SE QUARTER OF SECTION 11 AND THE SOUTHWEST QUARTER OF SECTION 12 AS SHOWN HEREON.

REGISTERED PROFESSIONAL LAND SURVEYOR
Greg E. Flowers
OREGON
JUNE 30, 1997
GREG E. FLOWERS
02820LS
RENEWES 12/31/11

Date Stamped: 8/24/2010

USKH
SHARED VISION. UNITED APPROACH.
Architecture • Engineering • Surveying
Planning • Environmental Services

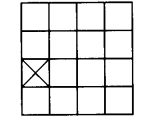
- 621 W. Malton Ave., Suite 309, Spokane, WA 99201 (509) 328-5139
- 313 D Street, Suite 200, Lewiston, Idaho 83501 (509) 746-2661
- 5 North Cobble Walla Walla, WA 99362 (509) 522-4843

www.USKH.com

Project: A SURVEY LOCATED IN THE NW 1/4 OF THE SW 1/4 OF SECTION 12, TOWNSHIP 5 NORTH, RANGE 35 EAST, W.M., UMATILLA COUNTY, OREGON

Client: THE OLD PIONEER CEMETERY C/O NANCY DOHERTY 219 LOCUST ROAD MILTON-FREEWATER, OR 97862

SECTION INDEX



SECTION 12
T. 5 N., R. 35 E.

Project Mgr.	GREG FLOWERS
Drawn	GEF
Checked	PIWPT
Date	AUGUST 2010
Scale	1" = 200'
CAD File:	1262600-ROS-STATEPLANE.DWG
Sheet Contents:	RECORD OF SURVEY
Sheet No.:	
U.S.K.H. W.O. 1262600	

RECEIVED BY

Read by
10-15-18