

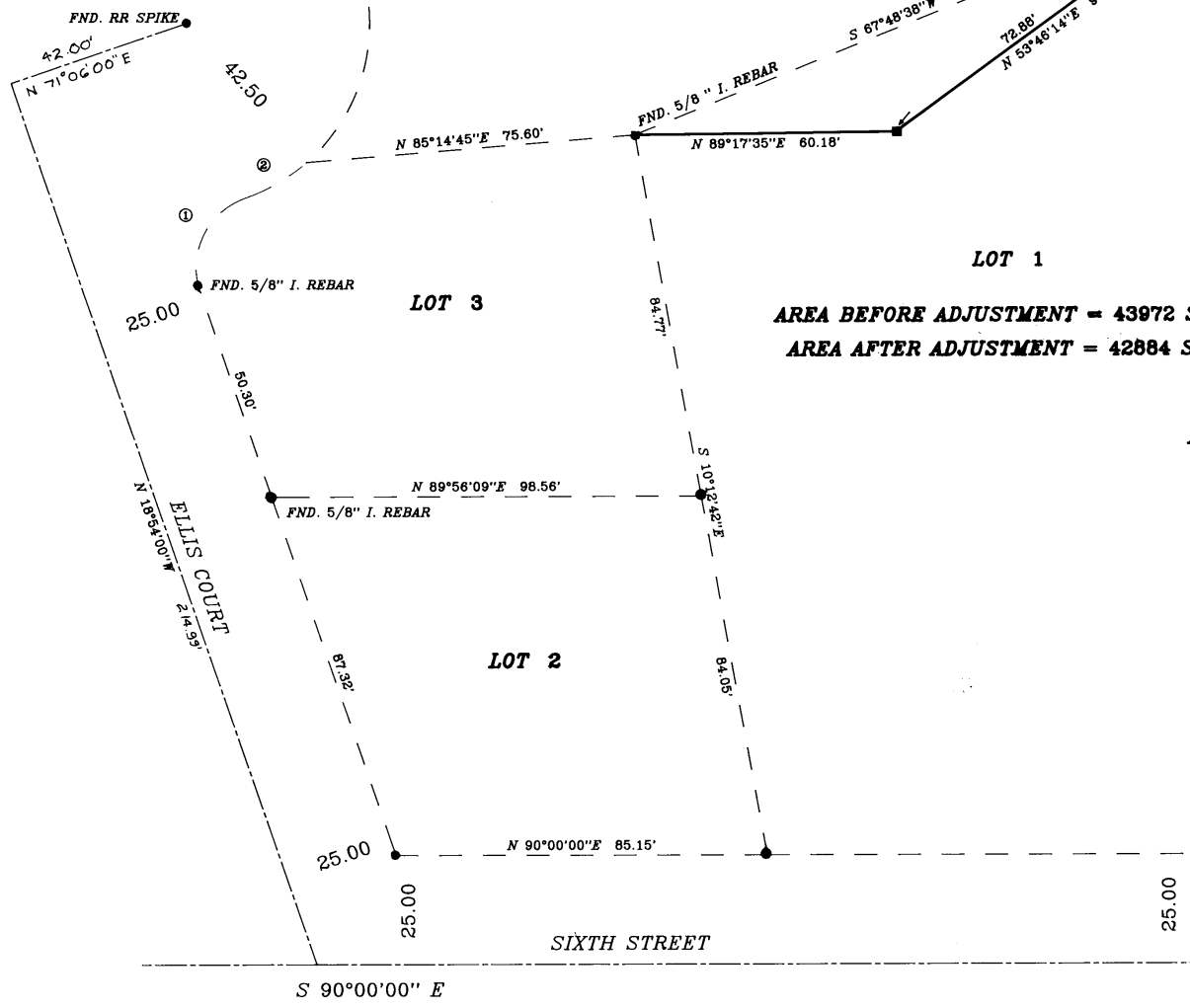
LOT 4
AREA BEFORE ADJUSTMENT = 16792 SQ. FT
AREA AFTER ADJUSTMENT = 18830 SQ. FT.

LOT 1
AREA BEFORE ADJUSTMENT = 43972 SQ. FT.
AREA AFTER ADJUSTMENT = 42884 SQ. FT.

NARRATIVE

PURPOSE OF THIS SURVEY WAS TO MOVE THE BOUNDARY LINE BETWEEN LOTS 1 AND 4 IN DURHAM SUBDIVISION IN MILTON-FREEWATER, OR. THE PINS FROM THE SUBDIVISION WERE FOUND AS SHOWN AND WERE FOUND TO FIT THE ORIGINAL LOCATION WITHIN ACCEPTABLE TOLERANCES. THE BEARINGS FOR SIXTH STREET FROM THE ORIGINAL PLAT WERE USED AS CONTROL AND A TOTAL STATION WAS USED.

- FOUND MONUMENTS FROM DURHAM ADDITION PLAT
- SET 5/8" X 14" IRON REBAR W/ ALMU CAP
STAMPED PLS 933



KRUMBEIN ENGINEERING LTD. ENGINEERS - SURVEYORS - PLANNERS 361 S.E. Second Pendleton, Oregon	Scale 1" = 20'	Dwn. By DHK	Drng. No. 1111c	Revision 1
	Date 8-15-11	Clcd. By	Job No. 1107	Revision 2
BOUNDARY LINE ADJUSTMENT REEDER REGISTERED PROFESSIONAL LAND SURVEYOR JULY 17, 1970 DIVISION OF PROFESSIONAL SERVICES		DURHAM ADDITION MILTON-FREEWATER, OR. NW 1/4, NE 1/4, S. 1/2, T. 5N, R. 20E, WM		