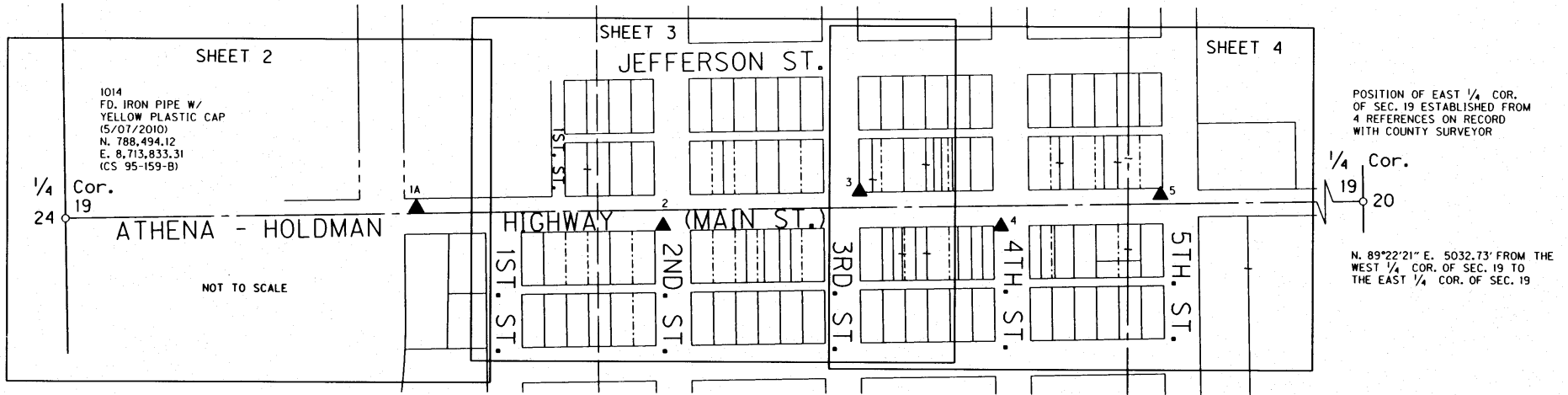


SEC. 19, T. 4 N., R. 35 E., WM.



NARRATIVE

THE PURPOSE OF THIS SURVEY IS TO RESOLVE THE LOCATION OF THE EXISTING RIGHT-OF-WAY (R/W) FOR A PORTION OF THE ATHENA - HOLDMAN HIGHWAY THROUGH THE TOWN OF ATHENA, OREGON. THIS SURVEY IS TO ESTABLISHES A CONTROL NETWORK AND RECOVERS THE POSITION OF MONUMENTS OF RECORD. THIS SURVEY WAS DONE IN PREPARATION FOR THE OR334: ATHENA MAIN STREET IMPROVEMENTS, DEPARTMENT OF TRANSPORTATION (ODOT) PROJECT.

REFERENCE DOCUMENTS USED: ODOT DRAWINGS 3B2-3, 6B-16-19, AND 6B-21-10; COUNTY SURVEY (CS) G-12-A, CS Q-1061-AX, CS 93-45-B, CS 95-56-B, CS 95-61-B, CS 95-159-B, CS 95-160-B, CS 96-18-B, CS 97-43-B, CS 97-175-B, CS 98-118-B, CS 00-115-B, CS 03-47-B, CS 03-97-B, CS 03-306-B, CS 04-170-B AND CS 05-157-B. SUBDIVISIONS USED: ORIGINAL TOWN OF CENTERVILLE; RICHARD'S ADDITION TO ATHENA; AND KIRK'S THIRD ADDITION TO CENTERVILLE.

MONUMENT 1012 WAS ACCEPTED AS THE INTERSECTION OF MAIN ST. AND 2ND STREET. THIS MONUMENT IN CONJUNCTION WITH MONUMENT 1013 WERE USED TO DEFINE HIGHWAY CENTER LINE FROM 2ND ST. TO THE UNION PACIFIC RAILROAD CENTER LINE. FROM THIS POINT, CENTER LINE WAS RAN TO A POINT 8.00' SOUTHERLY OF THE WEST 1/4 CORNER OF SECTION 19 AS DESCRIBED BY CS 95-159-B AND A HARTMAN ABSTRACT MAP PROVIDED BY UMATILLA COUNTY. MONUMENT 1013 WAS ALSO USED TO DEFINE THE PORTION OF 1ST. STREET NORTH OF MAIN ST. MONUMENT 1017 WAS USED TO DEFINE THE PORTION OF 1ST. STREET SOUTH OF MAIN ST. MONUMENT 1011 WAS ACCEPTED AS THE INTERSECTION OF 3RD ST. AND MAIN ST. MONUMENT 1010 WAS ACCEPTED AS THE INTERSECTION OF 4TH ST. AND MAIN ST. MONUMENT 1021 WAS ACCEPTED AS THE INTERSECTION OF 2ND ST. AND JEFFERSON ST. MONUMENT 1023 WAS ACCEPTED AS THE INTERSECTION OF 3RD ST. AND JEFFERSON ST. MONUMENTS 1025 AND 1026 WERE ACCEPTED ALONG WITH 1010 TO DEFINE THE CENTER LINE OF 4TH ST. MAIN STREET CENTER LINE WAS EXTENDED N.88°57'38" E. THE RECORD DISTANCE OF 380.00' TO ESTABLISH THE INTERSECTION WITH 5TH STREET. THE LINE WAS THEN PRODUCED EASTERLY FROM 5TH STREET USING AN ANGLE OF 0°03'00" LEFT AS NOTED ON ABOVE SAID HARTMAN ABSTRACT MAP.

STATIONING FOR THE SEGMENT FROM THE WEST LINE OF SECTION 19 TO THE INTERSECTION OF 3RD ST. AND MAIN ST. WAS DEVELOPED ASSUMING A STATION OF 29+61.14 AT THE INTERSECTION OF THE ABANDONED UNION PACIFIC RAILROAD TRACTS AND THE CENTERLINE OF MAIN STREET. THE HISTORIC STATIONING FOR THIS POINT FROM ODOT DRAWING 3B2-3 AND 6B-21-10 IS 231+61.2. STATIONING FOR THE SEGMENT FROM THE INTERSECTION OF 3RD ST. AND MAIN ST. TO THE EASTERLY END OF THE PROJECT WAS FROM ODOT DRAWING 6B-21-19. IT IS ACKNOWLEDGED THAT STATION EQUATION 39+92.94 BK. = 407+42.60 AHD. FALLS 0.01' NORTH AND 0.03' WEST OF MONUMENT 1011 WHICH IS THE ACCEPTED POSITION FOR THE INTERSECTION OF MAIN ST. AND THIRD ST.

THE BASIS OF BEARING WAS ESTABLISHED BY GPS USING AN OPUS SOLUTION. THIS SURVEY UTILIZES A LOCAL DATUM PLANE (LDP) THAT IS RELATIVE TO THE OREGON COORDINATE SYSTEM (OCS) OF 1983 (CORS96) (EPOCH 2002), NORTH ZONE, WITH RESPECT TO THE LOCAL LATITUDE AND GROUND ELEVATION. THE LDP COORDINATES DEFINE ACCURATE GROUND DISTANCES. TO CONVERT LDP COORDINATES TO THE OREGON COORDINATE SYSTEM, MULTIPLY LDP COORDINATES BY 0.99987165.

LEGEND

- △ FOUND MONUMENT USED AS NETWORK POINT
- ▲ SET NETWORK POINT
- ▲▲ LINES OF OBSERVATION



NETWORK POINT COORDINATE TABLE

PT. NO.	LDP NORTHING	LDP EASTING	STATION	OFFSET	DATE	DESCRIPTION & REFERENCE DOCUMENTS
1A	788,519.96	8,714,620.83	30+38.24	19.41 LT.	3/04/10	SET 'PK' NAIL
2	788,481.24	8,715,174.84	35+91.47	29.29 RT.	3/04/10	SET 'PK' NAIL
3	788,560.02	8,715,615.83	407+83.47	41.51 LT.	3/04/10	SET 'PK' NAIL
4	788,483.36	8,715,933.52	410+99.73	40.90 RT.	3/04/10	SET 'PK' NAIL
5	788,555.22	8,716,290.81	414+58.26	24.47 LT.	3/04/10	SET 'PK' NAIL
ATHENA	788,951.34	8,720,571.22	N/A	N/A	3/04/10	FD. BR. CAP IN CONC. POST MKD. "ATHENA, 1963"

REGISTERED PROFESSIONAL LAND SURVEYOR

Robert E. Butler

OREGON
JULY 25, 1995
ROBERT ERICH BUTLER
2733

EXPIRES: 12/31/2013

ENGLISH OREGON DEPARTMENT OF TRANSPORTATION

CONTROL, RECOVERY AND RETRACEMENT MAP
OR334: ATHENA MAIN STREET IMPROVEMENTS
ATHENA - HOLDMAN HIGHWAY
UMATILLA COUNTY, OREGON

FOR ODOT REGION 5
3012 ISLAND AVENUE
LA GRANDE, OR 97850

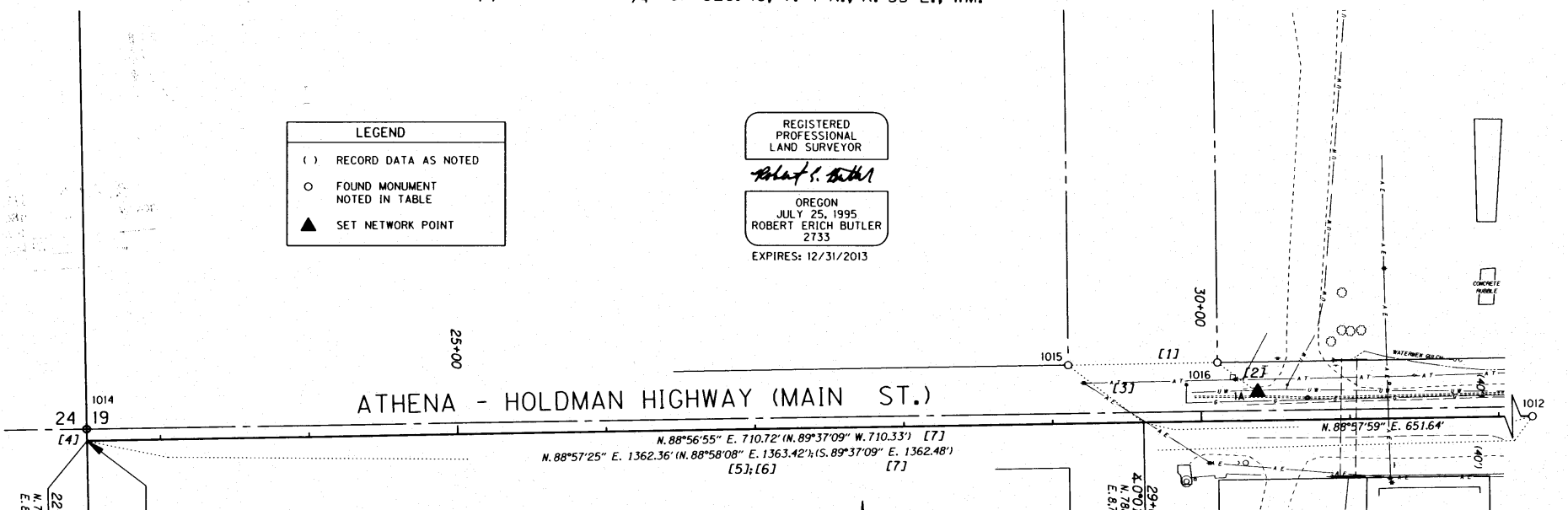
FEBRUARY 21, 2012
NO SCALE
SHEET 1 OF 4

RECEIVED BY
Umatilla County Surveyor
Date: 2/21/2012
Rec'd By: S. Oles
No.: 12-086-5

SW¹/₄ AND THE NW¹/₄ OF SEC. 19, T. 4 N., R. 35 E., WM.

LEGEND	
()	RECORD DATA AS NOTED
○	FOUND MONUMENT NOTED IN TABLE
▲	SET NETWORK POINT

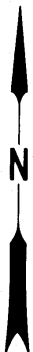
REGISTERED PROFESSIONAL LAND SURVEYOR
Robert E. Butler
 OREGON
 JULY 25, 1995
 ROBERT ERICH BUTLER
 2733
 EXPIRES: 12/31/2013



ESTABLISHED 8.00' SOUTHERLY OF 1/4 CORNER AS PER CS 95-159-B AND HARTMAN ABSTRACT COMPANY MAP SENT BY UMATILLA COUNTY ROAD DEPT.

NOTES

- [1] N. 88°55'59" E. 100.28'
- [2] S. 53°33'15" E. 33.82'
- [3] S. 52°25'28" E. 63.99'
- [4] STA 22+50.42 TO PT. 1014: N. 1°11'48" W. 8.00' (8.00') CS 95-159-B (S. 00°24'04" W. 8.00') CS 00-149-B;
- [5] CS 95-159-B
- [6] CS 96-104-B
- [7] CS 00-149-B

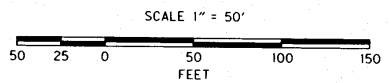


RECOVERED MONUMENT LIST

PT. NO.	LDP NORTHING	LDP EASTING	STATION	OFFSET	DATE	DESCRIPTION & REFERENCE DOCUMENTS
1A	788,519.96	8,714,620.83	30+38.24	19.41 LT.	3/04/10	SET 'PK' NAIL
1012	788,510.92	8,715,195.61	36+12.77	0.00	3/04/10	FD. RAILROAD SPIKE (C.S. G-12-A)
1014	788,494.12	8,713,833.31	N/A	N/A	5/07/10	FD. IRON PIPE W/YELLOW PLASTIC CAP (CS 95-159-B)
1015	788,538.18	8,714,493.37	29+11.15	39.95 LT.	5/07/10	FD. 3/8" IRON ROD W/YELLOW CAP (C.S. 95-159-B)
1016	788,540.05	8,714,593.62	30+11.41	39.99 LT.	5/07/10	FD. 3/8" IRON ROD (C.S. 00-15-C)

Athena City Limits

RECEIVED BY
 Umatilla County Surveyor
 Date: 5/31/2012
 Recd By: *J. O'Leary*
 No.: 12-086-B



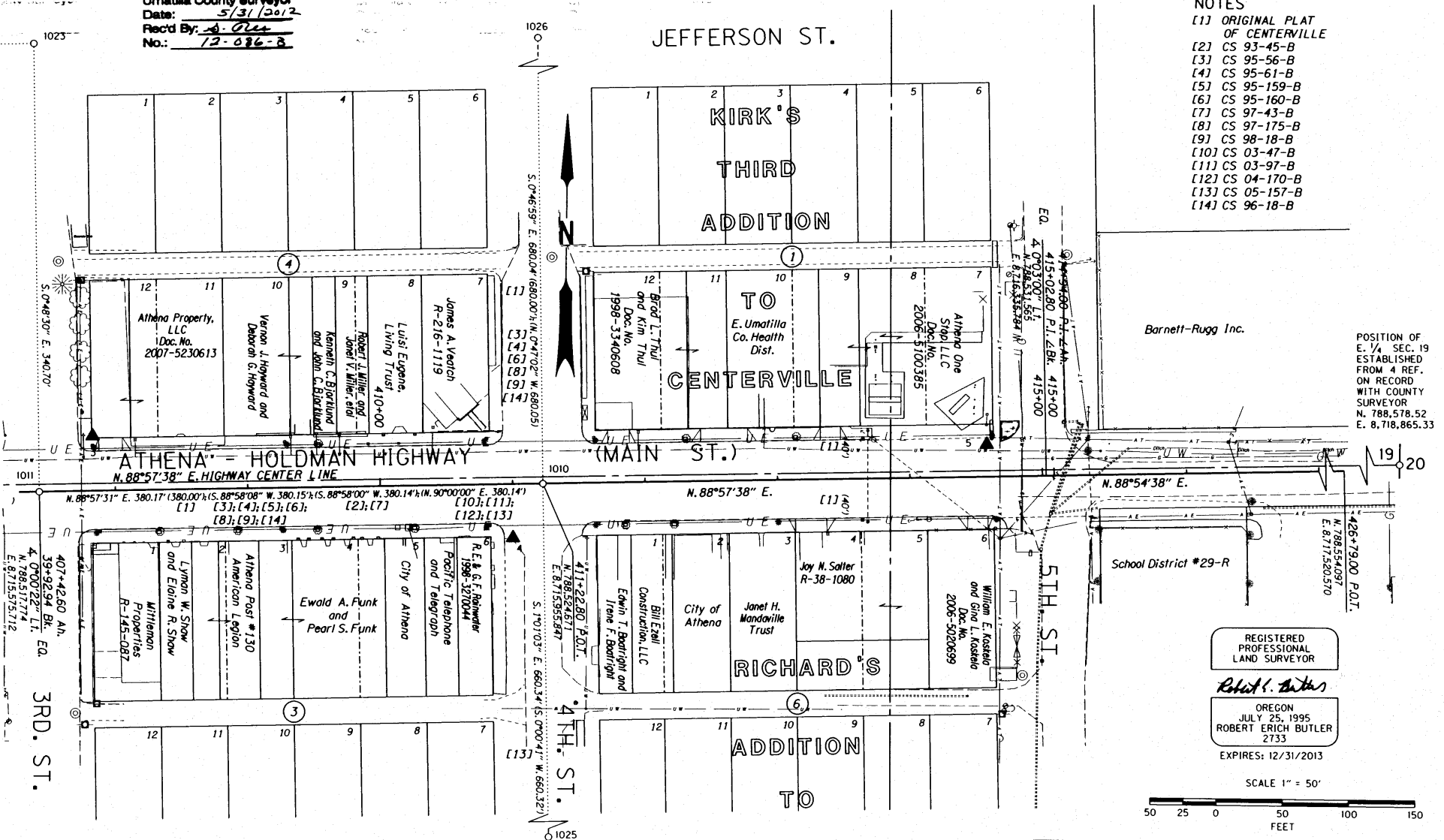
29+61.14 P.I.
 X.0710.4' R.L.
 N. 788,499.161
 E. 871,454.082
 O. W. R. AND N. CO.
 (UNION PACIFIC RAILROAD)

ENGLISH OREGON DEPARTMENT OF TRANSPORTATION
 CONTROL, RECOVERY AND RETRACEMENT MAP
 OR334: ATHENA MAIN STREET IMPROVEMENTS
 ATHENA - HOLDMAN HIGHWAY
 UMATILLA COUNTY, OREGON
 FOR ODOT REGION 5
 3012 ISLAND AVENUE
 LA GRANDE, OR 97850
 FEBRUARY 21, 2012
 SCALE: 1" = 50'
 SHEET 2 OF 4

RECEIVED BY
 Umatilla County Surveyor
 Date: 5/31/2012
 Rec'd By: A. Olet
 No.: 12-086-B

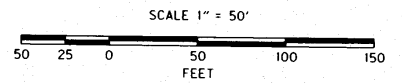
SEC. 19, T. 4 N., R. 35 E., WM.

- NOTES
- [1] ORIGINAL PLAT OF CENTERVILLE
 - [2] CS 93-45-B
 - [3] CS 95-56-B
 - [4] CS 95-61-B
 - [5] CS 95-159-B
 - [6] CS 95-160-B
 - [7] CS 97-43-B
 - [8] CS 97-175-B
 - [9] CS 98-18-B
 - [10] CS 03-47-B
 - [11] CS 03-97-B
 - [12] CS 04-170-B
 - [13] CS 05-157-B
 - [14] CS 96-18-B



POSITION OF E. 1/4 SEC. 19 ESTABLISHED FROM A REF. ON RECORD WITH COUNTY SURVEYOR N. 788,578.52 E. 8,718,865.33

REGISTERED PROFESSIONAL LAND SURVEYOR
Robert E. Butler
 OREGON
 JULY 25, 1995
 ROBERT ERICH BUTLER
 2733
 EXPIRES: 12/31/2013



RECOVERED MONUMENT LIST

PT. NO.	LDP NORTHING	LDP EASTING	STATION	OFFSET	DATE	DESCRIPTION & REFERENCE DOCUMENTS
3	788,560.02	8,715,615.83	407+83.47	41.51 LT.	3/04/10	SET 'PK' NAIL
4	788,483.36	8,715,933.52	410+99.73	40.90 RT.	3/04/10	SET 'PK' NAIL
5	788,555.22	8,716,290.81	414+58.26	24.47 LT.	3/04/10	SET 'PK' NAIL
1010	788,524.67	8,715,955.85	411+22.80	0.00	3/04/10	FD. 1" IRON ROD IN MONUMENT BOX (C.S. N-70-B)
1011	788,517.76	8,715,575.74	407+42.63	0.01 RT.	3/04/10	FD. 1" IRON ROD IN MONUMENT BOX (C.S. N-70-B)
1023	788,858.43	8,715,570.93	407+44.00	340.68 LT.	5/07/10	FD. 'MAG' NAIL, NO SURVEY RECORD FOUND
1025	787,864.43	8,715,967.57	411+22.55	660.34 RT.	5/07/10	FD. 5/8" IRON ROD
1026	789,204.65	8,715,946.55	411+25.84	680.04 LT.	5/07/10	FD. RAILROAD SPIKE (C.S. 95-160-B)

LEGEND

- () RECORD DATA AS NOTED
- FOUND MONUMENT NOTED IN TABLE
- ▲ SET NETWORK POINT

ENGLISH OREGON DEPARTMENT OF TRANSPORTATION
 CONTROL, RECOVERY AND RETRACEMENT MAP
 OR334: ATHENA MAIN STREET IMPROVEMENTS
 ATHENA - HOLDMAN HIGHWAY
 UMATILLA COUNTY, OREGON
 FEBRUARY 21, 2012
 SCALE: 1" = 50'
 SHEET 4 OF 4