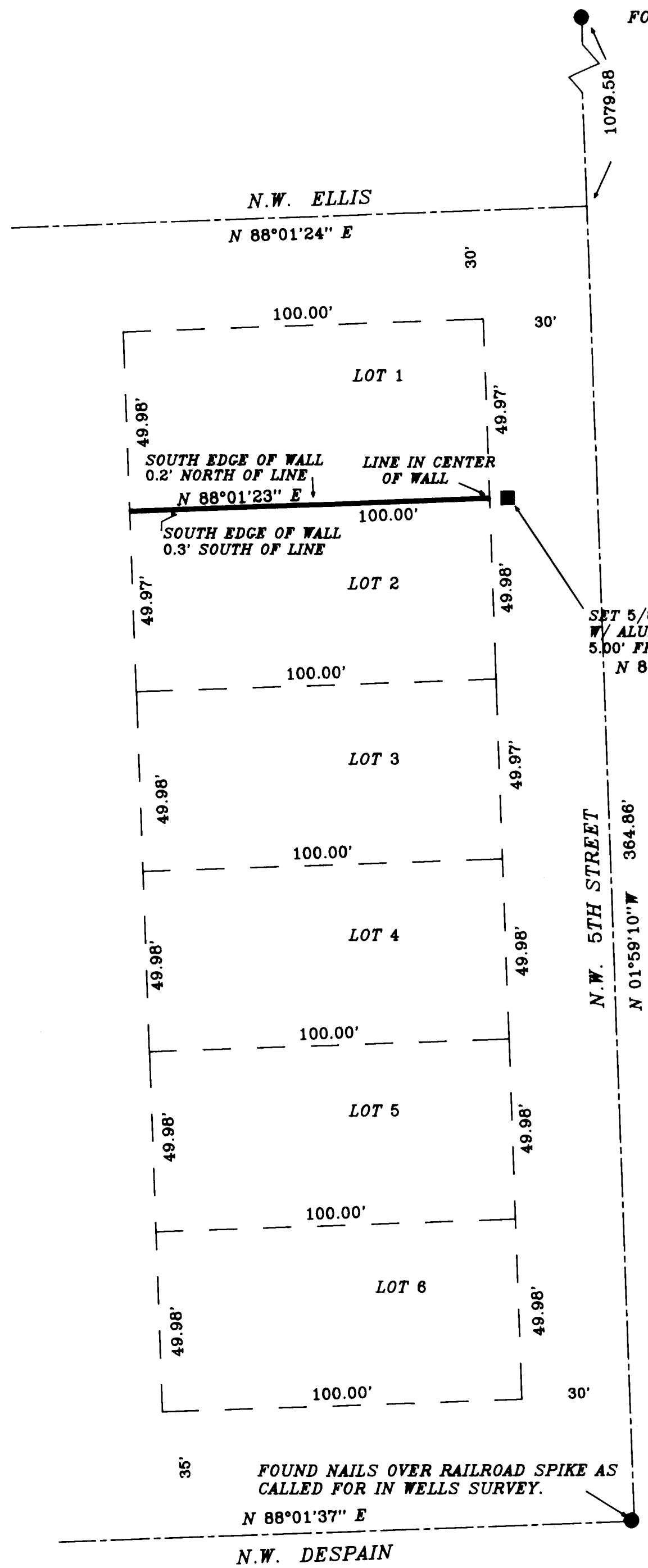
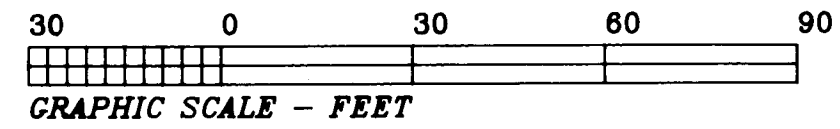


FOUND BRASS CAP MONUMENT AS SET BY CITY OF PENDLETON



NARRATIVE

PURPOSE OF THIS SURVEY WAS TO ESTABLISH THE PROPERTY LINE BETWEEN LOTS 1 AND 2 IN BLOCK 10 OF LIVERMORE ADDITION. MONUMENTS USED WERE THOSE SET AND FOUND BY WELLS SURVEYING AND THE CITY OF PENDLETON AS SHOWN. MONUMENTS USED WERE VERIFIED AS BEING IN THE CORRECT RELATIONSHIP. THE WALL IN QUESTION APPEARS TO BE FAIRLY WELL ON THE LINE WITH BOTH PROPERTIES HAVING OWNERSHIP. A LIETZ TOTAL STATION WAS USED FOR THIS WORK. BEARINGS ARE FROM THE WELLS SURVEY.



● INDICATES FOUND MONUMENT AS NOTED.

■ INDICATES SET 5/8" X 24" INCH IRON REBAR WITH ALUMINUM CAP STAMPED PLS 933

KRUMBEIN ENGINEERING LTD. ENGINEERS - SURVEYORS - PLANNERS 361 S.E. Second Pendleton, Oregon	Scale 1" = 20'	Dwn. By H.P.	Dwg. No. 12-01C	Revision 1
	Date 8-10-12	Ckd. By D.H.K.	Job No. 1226	Revision 2
LOT LINE SURVEY FRANKLIN LOTS 1 & 2, BLOCK 10 LIVERMORE ADDITION PENDLETON, UMATILLA CO.		REGISTERED PROFESSIONAL LAND SURVEYOR <i>David H. Krumbein</i> JUN 17, 2009 OREGON		SW 1/4, SE 1/4, SEC 3 T. 2 N., R. 32 E., W. 4 M.

RECEIVED BY
 Umatilla County Surveyor
 Date: 8/14/2012
 Rec'd By: J. Rice
 No.: 12-113-B