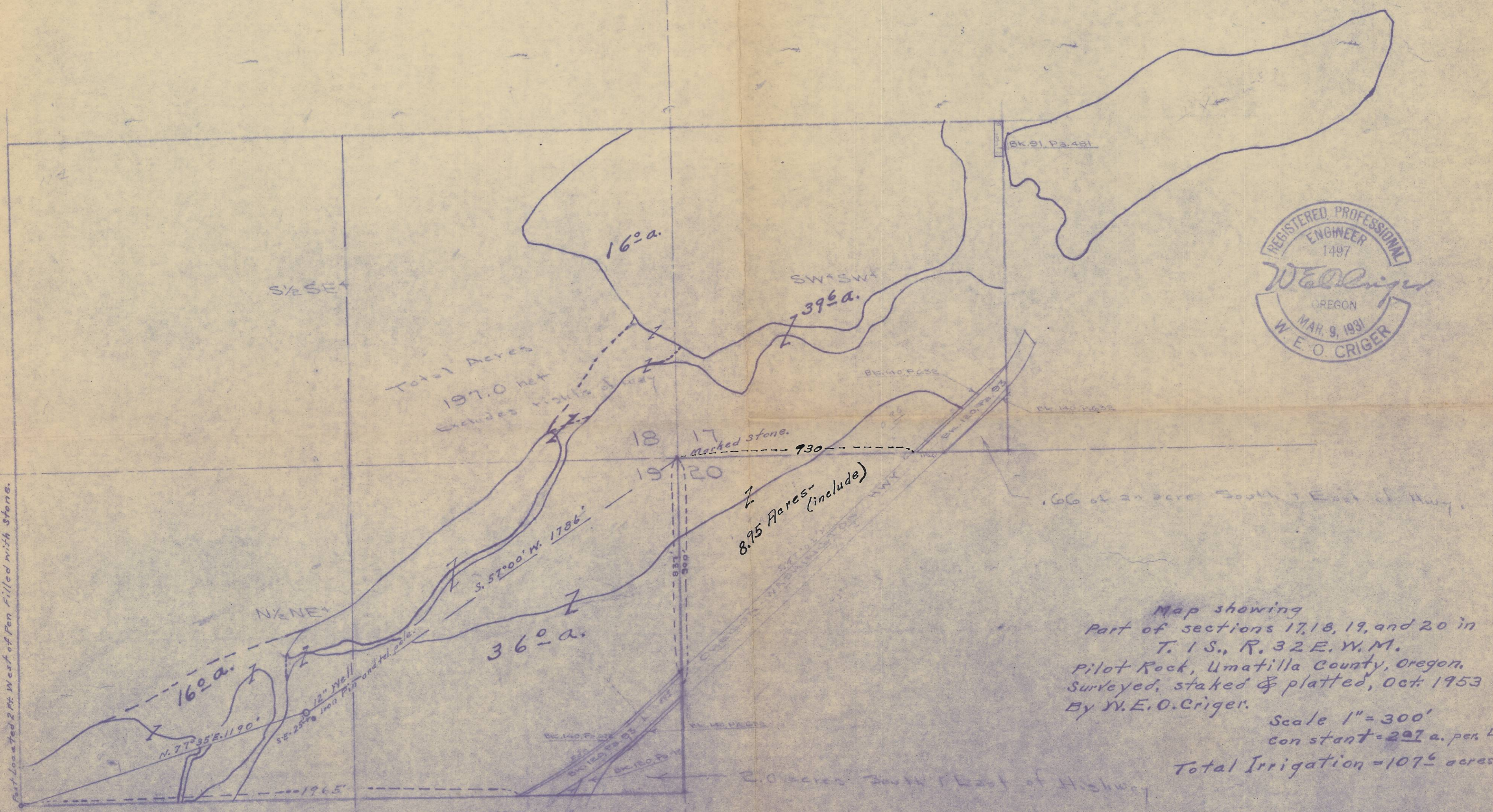


# Jack Luck - Pilot Rock

LAND OWNED BY JOHN E. LUCK  
 & GARNET E. LUCK, 1/2  
 IN TWP. 1 S., R. 32 E. W.M.  
 Scale: 1" = 300'



Map showing  
 Part of sections 17, 18, 19, and 20 in  
 T. 1 S., R. 32 E. W.M.  
 Pilot Rock, Umatilla County, Oregon.  
 Surveyed, staked & platted, Oct. 1953  
 By W.E.O. Criger.

Scale 1" = 300'  
 constant = 207 a. per  $\square$ "  
 Total Irrigation = 107<sup>6</sup> acres.

RECEIVED BY  
 Umatilla County Surveyor  
 Date: 2/21/13  
 Rec'd By: *D. Johnson*  
 No.: 13-091-B

15 32 17  
 15 32 18-36