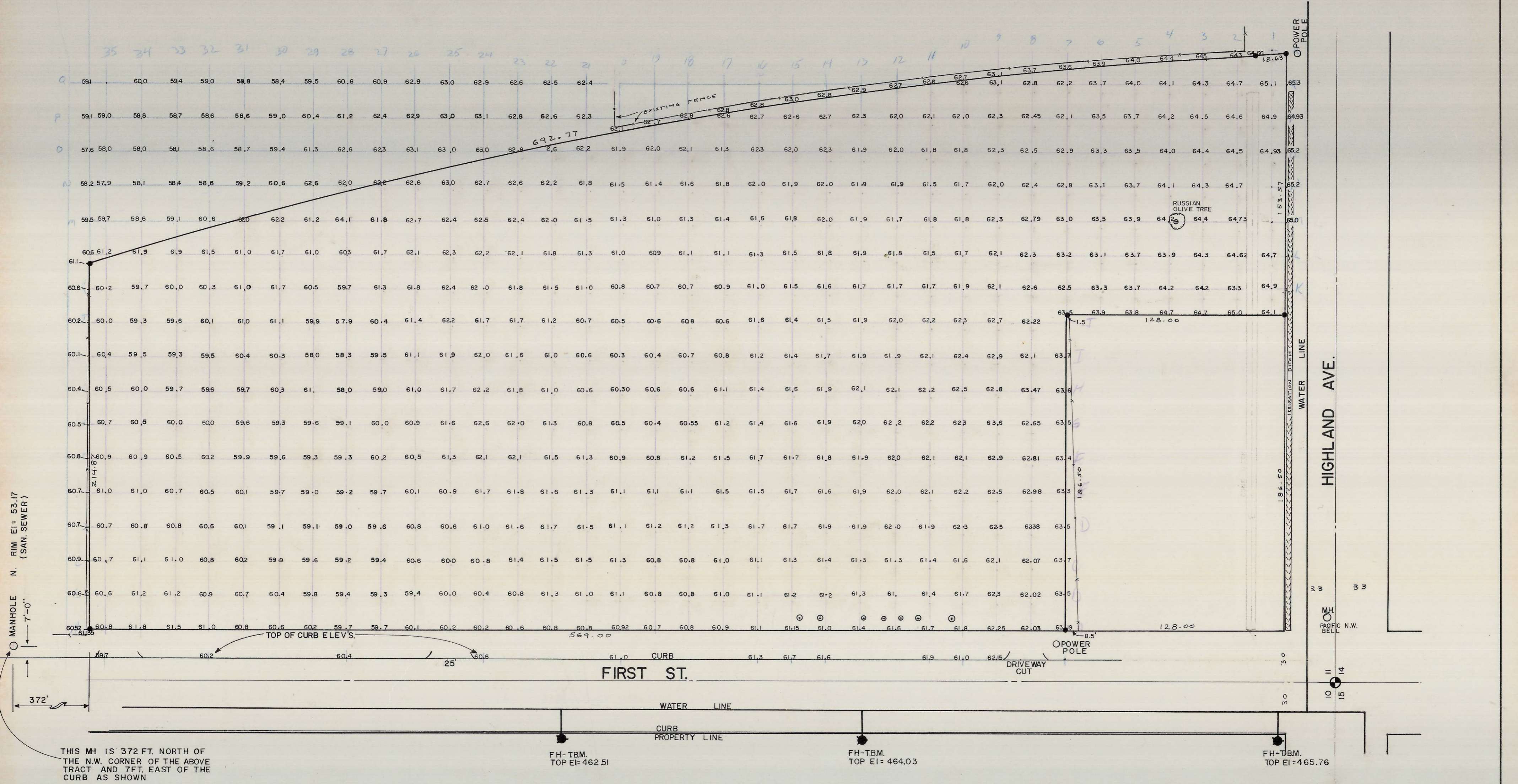
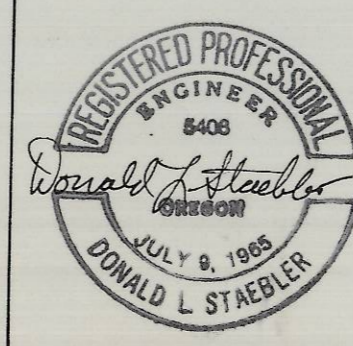


SCALE 1" = 40'  
DATE 4-15-76



RECEIVED BY  
 Umatilla County Surveyor  
 Date: 5/30/2013  
 Rec'd By: M.K.  
 No.: 13-173-B



NORPA DEVELOPMENT HERMISTON ORE.  
 TOPOGRAPHIC SURVEY FOR PACIFIC POWER  
 & LIGHT CO.  
 920 SW SIXTH AVE.  
 PORTLAND ORE. 97204

DESIGN	CHKD. D.S.	SCALE 1" = 40'	DATE APR. 15, 1976
DRAFT L.S.K.	APPD.	J.O. 76-004A	REV. DATE